



# Bramshaw House

Our Residential Home in  
Worthing, West Sussex



Inspected and rated

Good



External Audit Report

Rated Good



# Personalised Support From Day One

We provide specialist, bespoke support for adults with PMLD and autistic people, including those with physical disabilities and other complex health needs. Using adaptive technology and tailored environments, we help people build a life focused on what matters most to them.



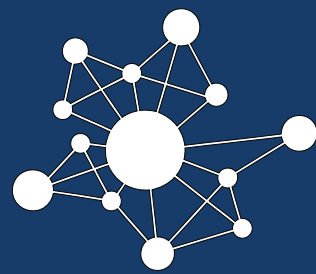
Expertise Supporting PMLD



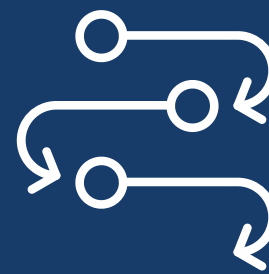
Knowledge and Skills in Enteral Feeding with a Blended Diet



Tailored Supportive Environment with DDA Compliance



Engage Family and Next-of-Kin Network



Residential to Supporting Living Pathways with Clustered Services and Peer Networks



# Bespoke Spaces, Co-Developed with You

We'll work with you to tailor the environment to the specific needs of the person moving in.



Private  
Bedroom



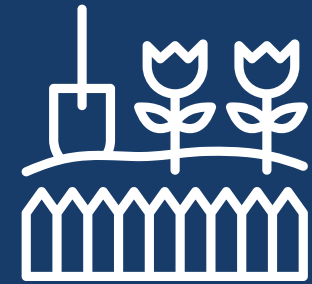
Wider Regional  
Peer Network



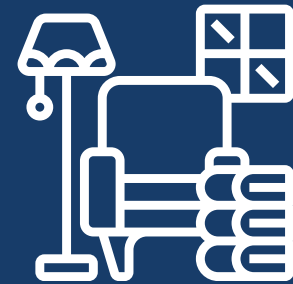
Near the Coast



Quiet Suburban  
Location



Shared Garden



Shared Communal  
Areas



## Our Available First Floor Bedroom Offers:

- **Fully Furnished Comfort:** Enjoy a large spacious room with a bed, a wardrobe, and a dresser.
- **Private En-Suite Bathroom:** Including a modern walk-in shower.
- **Natural Light and Garden Views:** A large window fills the room with natural light and offers a calming view of the garden.



# Meet the Team



**Suzanne**, Regional General Manager for the South East

Suzanne brings over 28 years of social care experience, including senior roles with the Active Care Group. She is committed to delivering outstanding outcomes and leads by example, creating supportive, high-quality environments for both the people we support and her colleagues



**Stephanie**, Operations Manager for the South East

Stephanie's background includes leading a 26-bed nursing service for Voyage Care. She is committed to collaboration and teamwork, ensuring the people we support receive high-quality care with dignity and respect, always striving to deliver the best possible outcomes.



**Karen**, Bramshaw House's Registered Home Manager

Karen brings over 30 years of social care experience, including working in the community with people experiencing mental health problems and setting up a new home for people with learning disabilities. She is the lead for Safer people handling in the Southeast Region.



# Committed to Co-Production

We have an established Influencers Group, made up of people we support, who play a pivotal role in shaping our services. Their insight ensures that everything we do reflects the needs, preferences, and aspirations of those with lived experience.

By actively listening to and involving this group, we embed authentic perspectives into every aspect of our work. From reviewing policies and practices to shaping key working approaches and designing new living opportunities, their voices directly influence how we develop and improve our support.

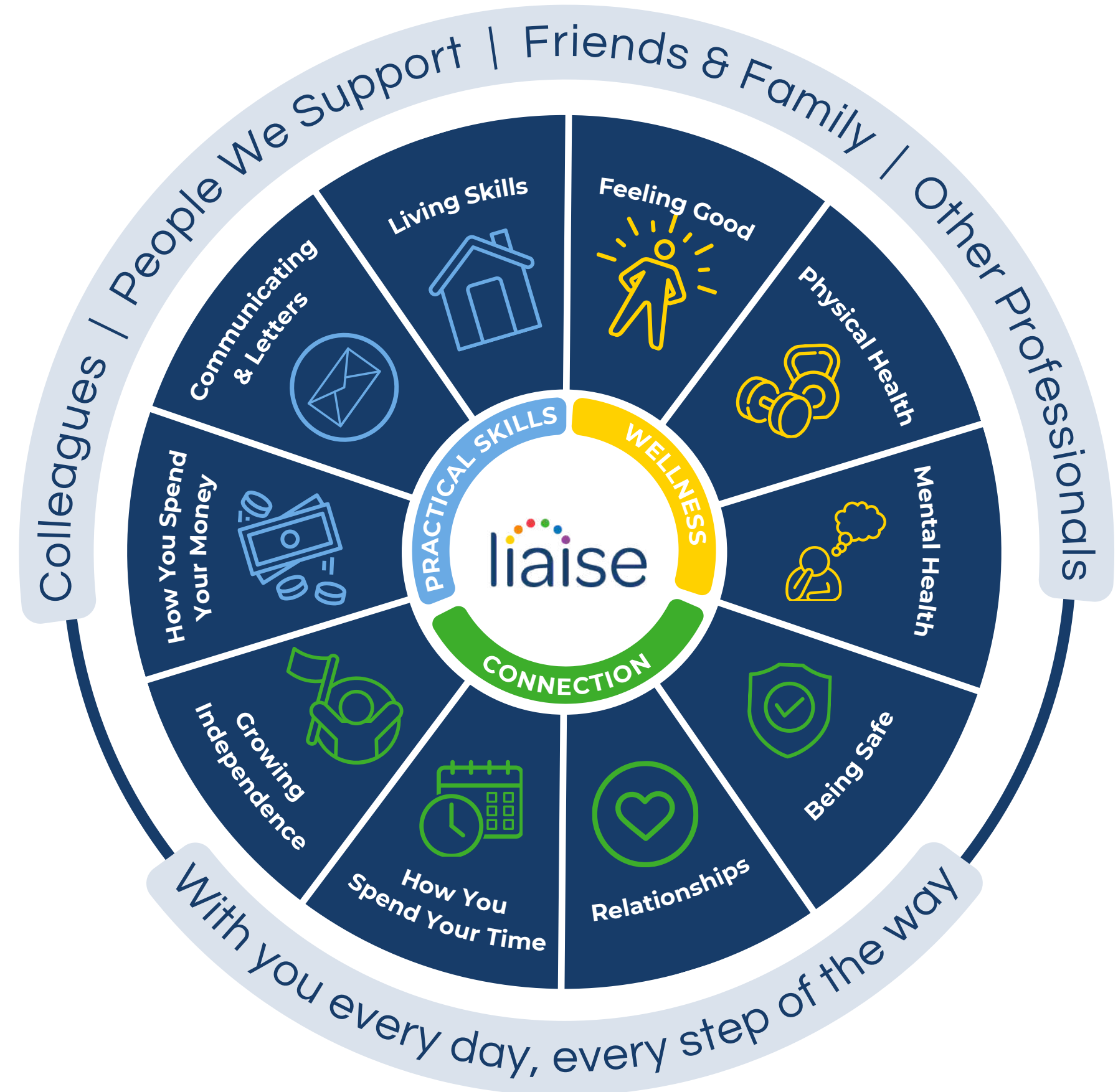


# Every Day, We Help People Thrive

Our Outcomes Pathway Model ensures support is designed with and for each person, creating tailored strategies shaped around their hopes, goals, and aspirations.

This multidisciplinary approach enables us to deliver high-quality, personalised support so people can achieve what matters most to them.

Click here to read our latest stories



# Progress that Matters, Led by the People We Support

Darren, who lives in one of our South East residential homes, is known for his vibrant personality, enthusiasm, and love of meeting new people. To support his social and emotional wellbeing, the team helped him access new opportunities in the community through PHAB Club. Since joining last year, Darren has embraced a wide range of activities, including archery, rifle shooting, power boating, discos, and a six-week activity programme. His enthusiasm and commitment were recognised when he received the club's "Most Spirited Member" award.

Through his involvement with PHAB Club, Darren has built confidence, developed new skills, formed meaningful friendships, and strengthened his connection to the community. His journey demonstrates the positive impact that tailored, interest-led support can have in promoting independence, inclusion, and a sense of achievement.



To make a referral, call or email

 0330 500 5052

 referrals@liaise.com



### Inquiry Received

We will respond within **24 hours** of referral



### Assessment

We will arrange an assessment to fully understand the needs of the individual within **5 working days**



### Sending An Offer

Following the assessment, we will make an offer within **10 working days**



### Invited To View Homes

We encourage you to visit our existing homes or new homes



### Transition

We will begin co-produced transition planning once a placement offer has been accepted



### Move In

To support a successful transition, we'll offer home visits and stays and we'll review the placement at frequent intervals within the **first three months**

## Contact Us



### Chelsea Chard

Referrals Partner and Young Adults Lead



referrals@liaise.com



0330 500 5052



<https://liaise.com/referral/>



<https://liaise.com/home/bramshaw-house/>



LiaiseUK



Liaise\_UK



LiaiseUK