



Marlow

Our Residential Home in
Worthing, West Sussex



External Audit Report

Rated Good



Personalised Support From Day One

We provide specialist, bespoke support for adults with PMLD and autistic people, including those with physical disabilities and other complex health needs. Using adaptive technology and tailored environments, we help people build live a life focused on what matters most to them.



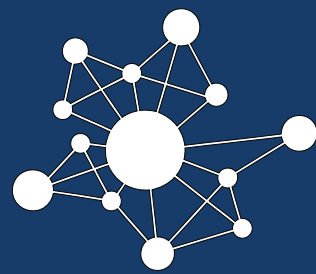
Expertise Supporting PMLD



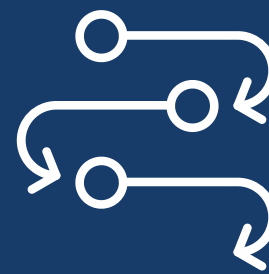
Knowledge and Skills in Enteral Feeding with a Blended Diet



Tailored Environment with Ceiling-Tracking Specialist Support Available



Engage Family and Next-of-Kin Network



Residential to Supporting Living Pathways with Clustered Services and Peer Networks



Bespoke Spaces, Co-Developed with You

We'll work with you to tailor the environment to the specific needs of the person moving in.



Private
Bedroom



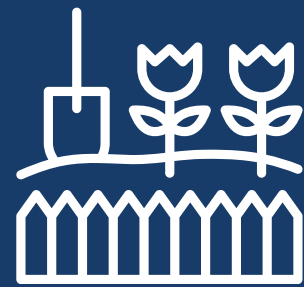
Wider Regional
Peer Network



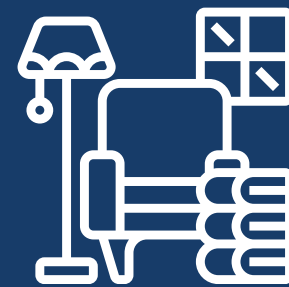
Accessible
Environment



Near the
Coast



Shared
Garden



Shared
Communal
Areas



Our Available Ground Floor Bedroom Offers:

- **Fully Furnished Comfort:** Enjoy a spacious room with a bed, a wardrobe, and a dresser.
- **Private En-Suite Bathroom:** Including a modern walk-in shower.
- **Ceiling Hoist Track:** For assistance with moving a person safely and comfortably.



Meet the Team



Suzanne, Regional General Manager for the South East

Suzanne brings over 28 years of social care experience, including senior roles with the Active Care Group. She is committed to delivering outstanding outcomes and leads by example, creating supportive, high-quality environments for both the people we support and her colleagues



Stephanie, Operations Manager for the South East

Stephanie's background includes leading a 26-bed nursing service for Voyage Care. She is committed to collaboration and teamwork, ensuring the people we support receive high-quality care with dignity and respect, always striving to deliver the best possible outcomes.



Steve, Marlow's Registered Home Manager

After a career in the building industry, Steve quickly realised he'd been on the wrong career path. As a devoted family man, Steve loves supporting people and likes to think that the people he supports and the staff team feel like a big family, all working towards the same goal: to ensure we all live our best lives.



Committed to Co-Production

We have an established Influencers Group, made up of people we support, who play a pivotal role in shaping our services. Their insight ensures that everything we do reflects the needs, preferences, and aspirations of those with lived experience.

By actively listening to and involving this group, we embed authentic perspectives into every aspect of our work. From reviewing policies and practices to shaping key working approaches and designing new living opportunities, their voices directly influence how we develop and improve our support.

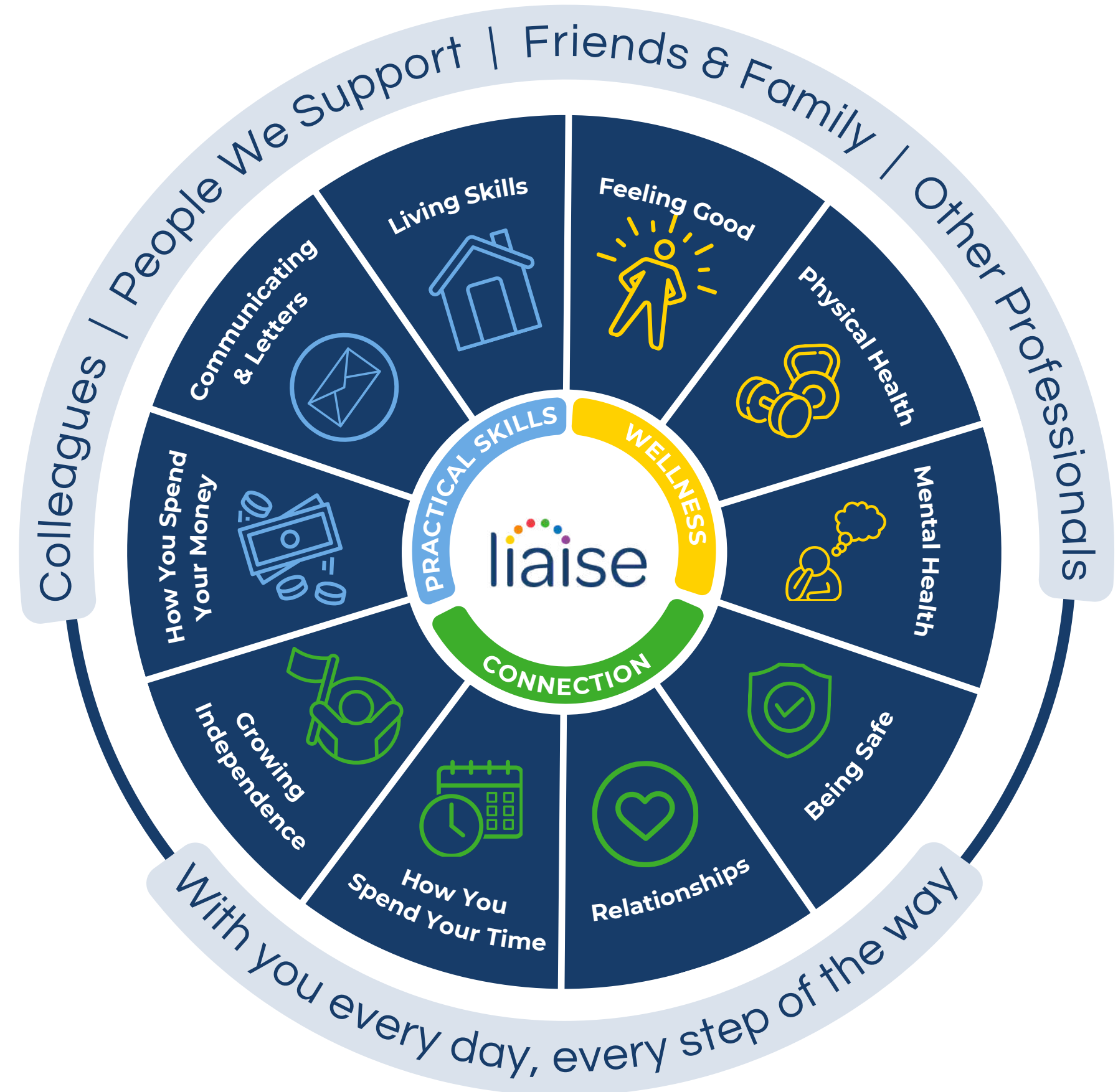


Every Day, We Help People Thrive

Our Outcomes Pathway Model ensures support is designed with and for each person, creating tailored strategies shaped around their hopes, goals, and aspirations.

This multidisciplinary approach enables us to deliver high-quality, personalised support so people can achieve what matters most to them.

[Click here to read our latest stories](#)



Progress that Matters, Led by the People We Support

When Adam first joined the Marlow community, daily life felt overwhelming. He relied on regular medication and often struggled during stressful moments. With steady, person-led support from a team who believed in him, things gradually began to change.

As Adam grew more confident and emotionally settled, he no longer needed his medication - a milestone that brought a noticeable boost to his wellbeing and independence. With his confidence rising, he took on an IT course at college and began planning new adventures, including an upcoming cruise he's been excited about for months.

Adam's journey shows the power of time, trust, and tailored support. His progress continues to inspire everyone around him.



To make a referral, call or email

 0330 500 5052

 referrals@liaise.com



Inquiry Received

We will respond within **24 hours** of referral



Assessment

We will arrange an assessment to fully understand the needs of the individual within **5 working days**



Sending An Offer

Following the assessment, we will make an offer within **10 working days**



Invited To View Homes

We encourage you to visit our existing homes or new homes



Transition

We will begin co-produced transition planning once a placement offer has been accepted



Move In

To support a successful transition, we'll offer home visits and stays and we'll review the placement at frequent intervals within the **first three months**

Contact Us



Theresa Cook
Referrals & Placement Manager



referrals@liaise.com



0330 500 5052



<https://liaise.com/referral/>