



# Somerford Court

Our supported living home in  
Tottenham, North London



External Audit Report

Rated Good





# Experience you can trust, support you can rely on

Our London residential and supported living homes provide specialist, bespoke support for adults with learning disabilities, autistic people, and individuals with complex needs and behaviours of concern. Backed by over 20 years of expertise, we combine Positive Behaviour Support (PBS) and Speech and Language Therapy (SALT) to deliver truly person-led care.





# Why choose us?

**Tailored Living** - Each resident enjoys the comfort of a spacious private bedroom with an en-suite bathroom. The shared lounge and garden offer warm, inviting spaces perfect for relaxing or socialising. Regular communal activities - like gardening and cooking - help foster connection and a strong sense of community.

**Co-Produced, Person-Led Support** - Shaped by people with lived experience, our support is built around each person's strengths, passions, and goals. That could mean volunteering in a charity shop, publishing blog posts, or leading art workshops - whatever matters most to them.

**Expert, Caring Team** - All our staff are trained in Positive Behaviour Support (PBS) and Proact-SCIPr-UK. Each person we support has a tailored PBS plan, with input from our in-house PBS Practitioners, Speech and Language Therapists, and Occupational Therapists.





## Our Available ground floor Bedroom Offers:

- **Fully-Furnished Bedroom:**  
Includes a bed, dresser, wardrobe, and a desk table.
- **Private En-Suite Bathroom:** With a sink, toilet and a bathtub
- **Natural Light:** The room is filled with natural light and offers views of a well-maintained back garden, creating a calm atmosphere.





# Features



Private Bedroom



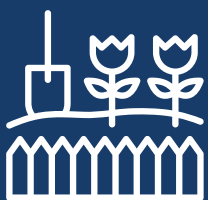
En-Suite Bathroom



Public Transport  
Links Nearby



Shared  
Communal Areas



Small Garden



Wheelchair Accessible  
Home



Suburban Location



Spacious Communal  
Rooms

# Benefits



Staff On-Site 24/7



Positive Behaviour  
Support (PBS)



Proact-SCIPr  
trained staff



Outcomes-Based  
Support



Regional Support  
Network



Speech And Language  
Therapy



Near A Learning  
Disability Day Centre



Personal Skill  
Development





# Meet the team



**Suzanne**, Regional General Manager for London and the South East Region

Suzanne offers over 28 years of social care experience, including leadership roles at Active Care Group. Dedicated to achieving exceptional outcomes for individuals, Suzanne leads by example, transforming care and fostering supportive environments for both those we support and her colleagues.



**Helen**, Operations Manager for the London Region

Since 2007, Helen has been committed to the social care sector, leading services to achieve positive outcomes. She focuses on building high-performing teams with a strong culture, believing these foundations are key to delivering exceptional care for those we support.



**Pascale**, Registered Manager at Somerford Court and Somerford Place

Pascale joined Somerford Court in 2025 as an experienced care professional with 26 years in the sector, specialising in supporting individuals with learning disabilities, autism, and elderly care. Her career began as a support worker before progressing into leadership roles, including six years as a domiciliary and bank deputy manager.





# Co-production

We're proud to have an established Influencers Group, made up of supported individuals from our homes. This group plays a pivotal role in shaping our plans, ensuring they are genuinely aligned with the needs and aspirations of all those living in a Liaise home.

By listening to people with lived experience, we bring an enriched, authentic perspective to everything we do. From policy and practice reviews to designing new homes, their voices directly influence our approach to key working, goal setting, and designing services.

Our commitment to co-production means creating meaningful partnerships that drive inclusion and deliver homes truly tailored to those we support.

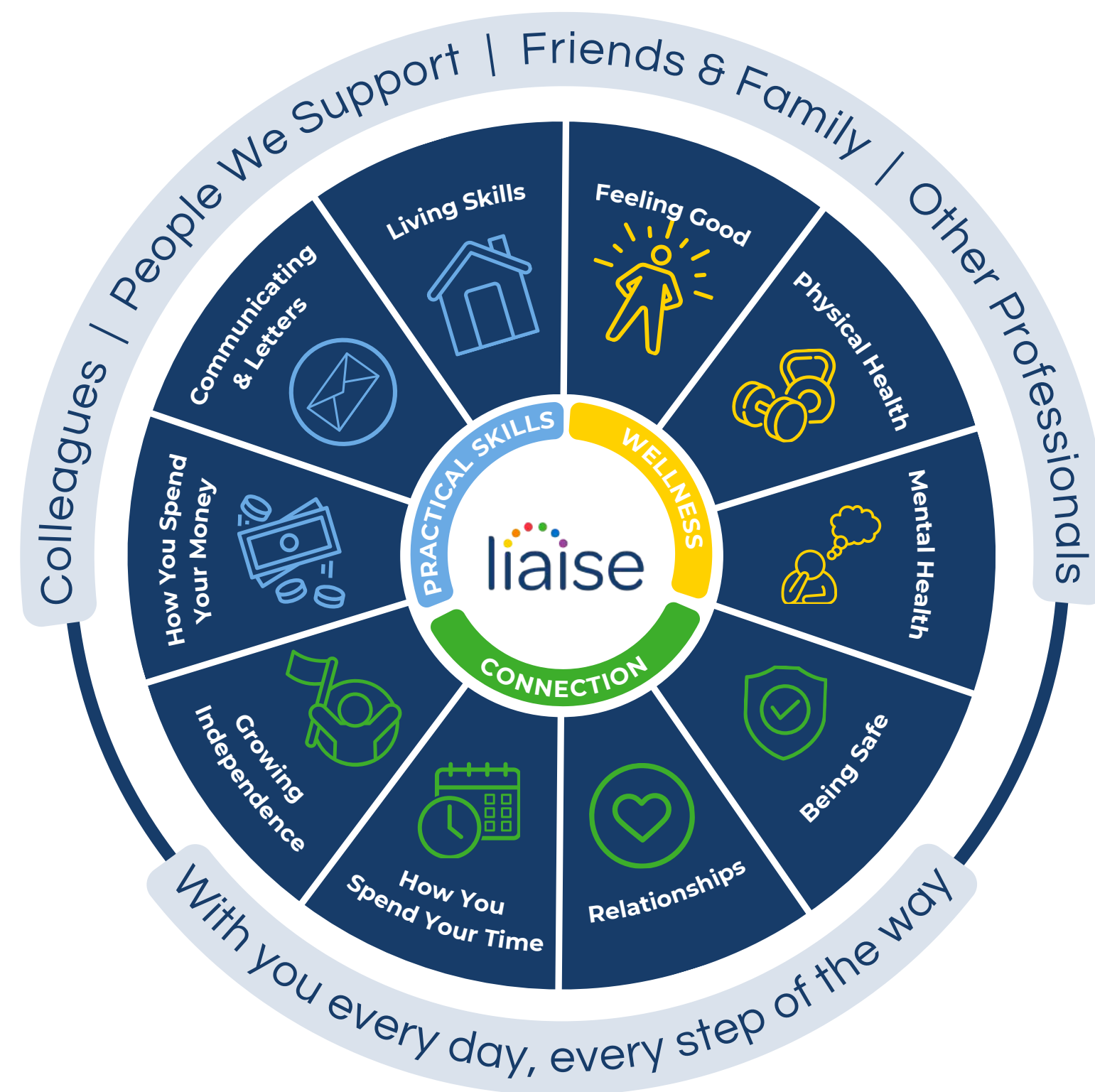


# Improving lives

Built on the principles of Positive Behaviour Support (PBS) and Proact-SCIPr-UK training, our approach prioritises respect for individual needs, promotes independence, and ensures safety and well-being.

We go beyond standard care by equipping all team members with specialist PBS training, guided by the expertise of PBS Practitioners, Speech and Language Therapists, and Occupational Therapists. This collaborative approach enables us to deliver high-quality, tailored support that drives meaningful outcomes for the people we support.

Our Outcomes Pathway Model helps us design bespoke care strategies based on each person's hopes, goals, and aspirations.





# Outcomes Based Success

Jean's recovery at Somerford Court is a powerful example of determination and care. After being bed-bound following a long hospital stay and concerns about her ability to walk again, she was supported through structured physiotherapy and patient encouragement from staff.

Step by step, Jean gradually moved from relying on a walking frame to using a wheelchair for longer distances, then to walking short stretches. Her journey even included a magical moment at Halloween, dancing without assistance. Each milestone reflects what can be achieved when someone is given time, respect, and the right support.





# Working Together: Environment, Social and Governance

With Liaise as your partner, you can confidently meet ESG obligations while together we make a tangible difference in the lives of those we support.

- Environmental Responsibility
  - Energy-efficient homes, with heat pump technology and natural light tunnels.
  - Commitment to sustainable procurement and operations.
  - Promoting green practices across our homes and communities.
- Social Impact
  - Measurement of outcomes and goals, to demonstrate impact.
  - Active co-production group to ensure equity and representation.
  - Quality of life improved via high-quality care, skill development, and community engagement.
- Governance Leadership
  - Transparent ESG aligned reporting.
  - Rigorous safeguarding, compliance, and ethical practices.
  - Stakeholder engagement at all levels to ensure accountability and continuous improvement.



To make a referral, call or email

 0330 500 5052

 referrals@liaise.com



### Inquiry Received

We will respond within **24 hours** of referral



### Assessment

We will arrange an assessment to fully understand the needs of the individual within **5 working days**



### Sending An Offer

Following the assessment, we will make an offer within **10 working days**



### Invited To View Homes

We encourage you to visit our existing homes or new homes



### Transition

We will begin co-produced transition planning once a placement offer has been accepted



### Move In

To support a successful transition, we'll offer home visits and stays and we'll review the placement at frequent intervals within the **first three months**

## Contact Us



### Theresa Cook

Referrals & Placements Manager



referrals@liaise.com



0330 500 5052



<https://liaise.com/referral/>



LiaiseUK



Liaise\_UK



LiaiseUK