

liaise

Lucas House

Our supported living home in
High Wycombe, Buckinghamshire



External Audit Report

Rated Good



Experience you can trust, support you can rely on

Our London residential and supported living homes provide specialist, bespoke support for adults with learning disabilities, autistic people, and individuals with complex needs and behaviours of concern, supported by Positive Behaviour Support (PBS) and Speech and Language Therapy (SALT) expertise. With over 20 years of trusted expertise, we deliver truly person-led care that's as individual as the people we support.



Why choose us?

Tailored Living - Our home offers spacious and calming environments designed around individual needs. Nearby amenities include open green spaces and High Wycombe town centre.

Co-Produced, Person-Led Support - Shaped by people with lived experience, we build care plans around each person's strengths and goals - like supporting someone with a passion for art to lead classes.

Expert, Caring Team - All our staff are trained in Positive Behaviour Support (PBS) and Proact-SCIPr-UK. Each person we support has a tailored PBS plan, with input from our in-house PBS Practitioners, Speech and Language Therapists, and Occupational Therapists.



Our Available Ground-Floor Apartment Offers:

- **Bright, Spacious Bedroom -**
Enjoy a generous room with a lovely garden view - perfect for relaxation and personal comfort.
- **Private En-Suite Bathroom -**
Includes a sink, toilet, and full-size bathtub for added privacy and convenience.



Features



Private Bedroom



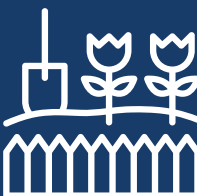
En-Suite Bathroom



Public Transport Links



Shared Communal Areas



Shared Garden



Supported Living



Suburban Location



Sensory Room

Benefits



Staff On-Site 24/7



Positive Behaviour Support (PBS)



Proact-SCIPr trained staff



Outcomes-Based Support



Regional Support Network



Speech And Language Therapy



Near A College



Personal Skill Development



Meet the team



Suzanne, Regional General Manager for London and the South East Region

Suzanne offers over 28 years of social care experience, including leadership roles at Active Care Group. Dedicated to achieving exceptional outcomes for individuals, Suzanne leads by example, transforming care and fostering supportive environments for both those we support and her colleagues.



Helen, Operations Manager for the London Region

Since 2007, Helen has been committed to the social care sector, leading services to achieve positive outcomes. She focuses on building high-performing teams with a strong culture, believing these foundations are key to delivering exceptional care for those we support.



Angela, Registered Manager at Lucas House and Totteridge House

As Registered Manager at Lucas and Totteridge, Angela brings 35 years of experience in care, spanning older adults, learning disabilities, and mental health. With a background at the Epilepsy Society and Autism Care UK, she is passionate about creating a homely environment.



Co-production

We're proud to have an established Influencers Group, made up of supported individuals from our homes. This group plays a pivotal role in shaping our plans, ensuring they are genuinely aligned with the needs and aspirations of all those living in a Liaise home.

By listening to people with lived experience, we bring an enriched, authentic perspective to everything we do. From policy and practice reviews to designing new homes, their voices directly influence our approach to key working, goal setting, and designing services.

Our commitment to co-production means creating meaningful partnerships that drive inclusion and deliver homes truly tailored to those we support.

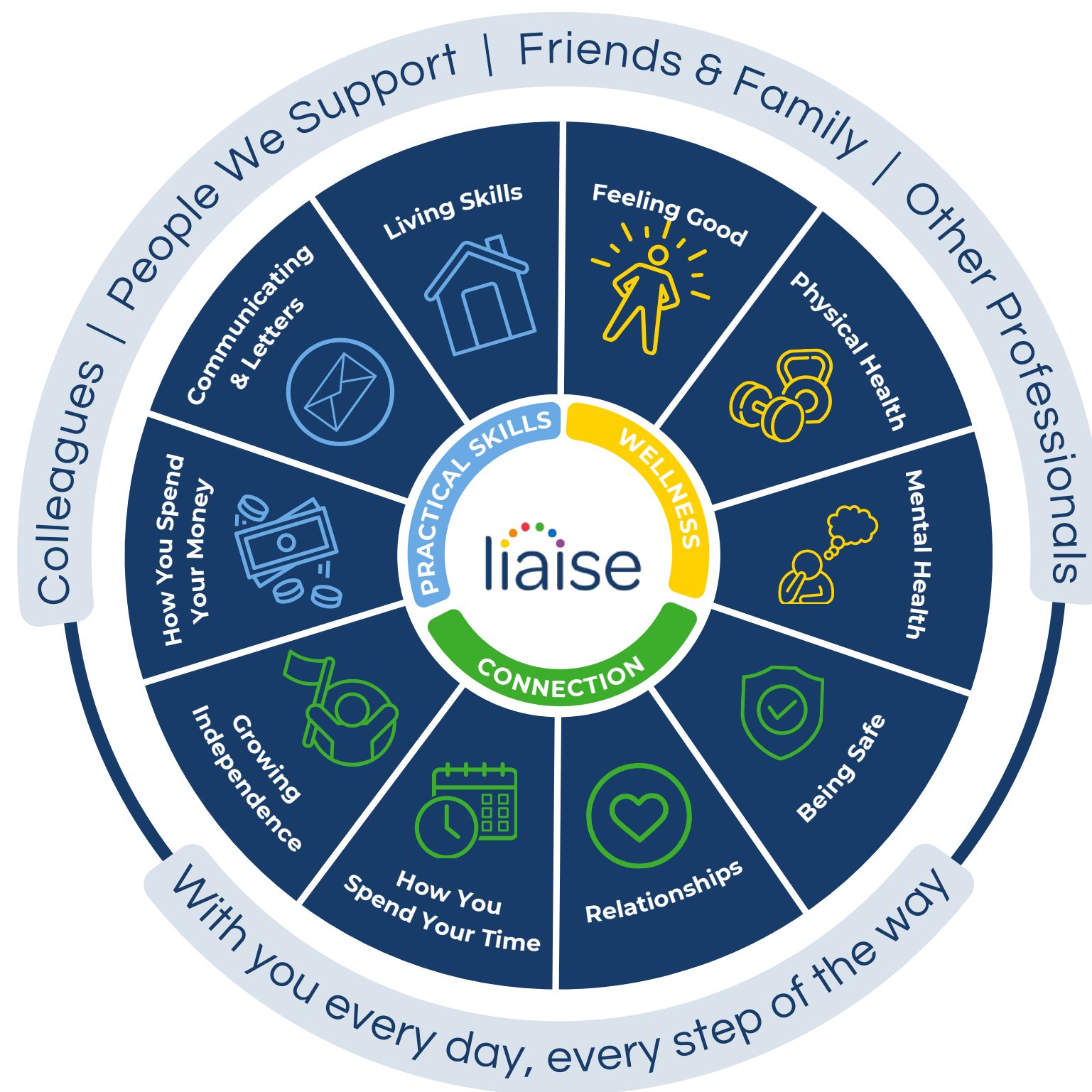


Improving lives

Built on the principles of Positive Behaviour Support (PBS) and Proact-SCIPr-UK training, our approach prioritises respect for individual needs, promotes independence, and ensures safety and well-being.

We go beyond standard care by equipping all team members with specialist PBS training, guided by the expertise of PBS Practitioners, Speech and Language Therapists, and Occupational Therapists. This collaborative approach enables us to deliver high-quality, tailored support that drives meaningful outcomes for the people we support.

Our Outcomes Pathway Model helps us design bespoke care strategies based on each person's hopes, goals, and aspirations.



Outcomes Based Success

When Lia first expressed a desire to work, the path ahead wasn't clear. Her disability, past experiences, and limited opportunities meant she faced uncertainty and hesitation. But the team at Lucas House believed in her potential, and they committed to building a supportive environment around her. Before placing Lia in work roles, staff arranged practical support and guidance, training, structured routines, and confidence-building steps. Understanding Lia's unique needs, they tailored roles that suited her strengths.

Today, Lia volunteers at a museum café and works at a community bookstore. She serves customers, manages the till, and organises collections, tasks she once could only dream of. More than just roles, these opportunities have transformed Lia's confidence, independence, and sense of purpose. With every shift, she proves how powerful inclusive employment can be when belief, planning and support come together.



Working Together: Environment, Social and Governance

With Liaise as your partner, you can confidently meet ESG obligations while together we make a tangible difference in the lives of those we support.

- Environmental Responsibility
 - Energy-efficient homes, with heat pump technology and natural light tunnels.
 - Commitment to sustainable procurement and operations.
 - Promoting green practices across our homes and communities.
- Social Impact
 - Measurement of outcomes and goals, to demonstrate impact.
 - Active co-production group to ensure equity and representation.
 - Quality of life improved via high-quality care, skill development, and community engagement.
- Governance Leadership
 - Transparent ESG aligned reporting.
 - Rigorous safeguarding, compliance, and ethical practices.
 - Stakeholder engagement at all levels to ensure accountability and continuous improvement.

To make a referral, call or email

 0330 500 5052

 referrals@liaise.com



Inquiry Received

We will respond within **24 hours** of referral



Assessment

We will arrange an assessment to fully understand the needs of the individual within **5 working days**



Sending An Offer

Following the assessment, we will make an offer within **10 working days**



Invited To View Homes

We encourage you to visit our existing homes or new homes



Transition

We will begin co-produced transition planning once a placement offer has been accepted



Move In

To support a successful transition, we'll offer home visits and stays and we'll review the placement at frequent intervals within the **first three months**

Contact Us



Theresa Cook

Referrals & Placements Manager



referrals@liaise.com



0330 500 5052



<https://liaise.com/referral/>



LiaiseUK



Liaise_UK



LiaiseUK