



Chingford

Our supported living home in
Chingford, London



External Audit Report

Rated Good



Experience you can trust, support you can rely on

Our London residential and supported living homes provide specialist, bespoke support for adults with learning disabilities, autistic people, and individuals with complex needs and behaviours of concern. Backed by over 20 years of expertise, we combine Positive Behaviour Support (PBS) and Speech and Language Therapy (SALT) to deliver truly person-led care.



Why choose us?

Tailored Living - Enjoy the perfect mix of privacy and community in our self-contained flats with private kitchens and shared spaces, including a well-kept garden. With lift access throughout, the property is fully accessible.

Co-Produced, Person-Led Support - Shaped by people with lived experience, we build care plans around each person's strengths and goals - like supporting someone with a passion for art to lead classes.

Expert, Caring Team - All our staff are trained in Positive Behaviour Support (PBS) and Proact-SCIPr-UK. Each person we support has a tailored PBS plan, with input from our in-house PBS Practitioners, Speech and Language Therapists, and Occupational Therapists.



Our Available Flat Offers:

- **Spacious Bedroom:** A large, comfortable room featuring a double bed, dresser, and wardrobe.
- **En-Suite Bathroom:** With a sink, toilet and a bathtub
- **Living room:** A cosy communal space shared with one flatmate, perfect for relaxing or socialising.



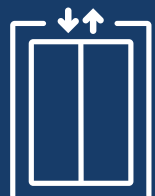
Features



Private Bedroom



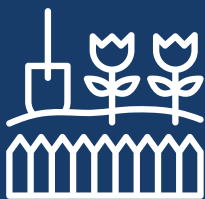
En-Suite Bathroom



Lift Access



Shared Communal Areas



Shared Garden



Wheelchair Accessible Ground Floor



Suburban Location



Public Transport Links

Benefits



Staff On-Site 24/7



Positive Behaviour Support (PBS)



Proact-SCIPr trained staff



Outcomes-Based Support



Regional Support Network



Speech And Language Therapy



Near A Learning Disability Day Centre



Personal Skill Development



Meet the team



Suzanne, Regional General Manager for London and the South East Region

Suzanne offers over 28 years of social care experience, including leadership roles at Active Care Group. Dedicated to achieving exceptional outcomes for individuals, Suzanne leads by example, transforming care and fostering supportive environments for both those we support and her colleagues.



Helen, Operations Manager for the London Region

Since 2007, Helen has been committed to the social care sector, leading services to achieve positive outcomes. She focuses on building high-performing teams with a strong culture, believing these foundations are key to delivering exceptional care for those we support.



Naresh, Registered Manager at Chingford

With over 14 years in adult social care, Naresh has held diverse roles since 2010. With previous tenure at Voyage Care, Naresh had managed two residential services rated “Good” by CQC and PAMMS, reflecting strong leadership, high standards, and person-led care.



Co-production

We're proud to have an established Influencers Group, made up of supported individuals from our homes. This group plays a pivotal role in shaping our plans, ensuring they are genuinely aligned with the needs and aspirations of all those living in a Liaise home.

By listening to people with lived experience, we bring an enriched, authentic perspective to everything we do. From policy and practice reviews to designing new homes, their voices directly influence our approach to key working, goal setting, and designing services.

Our commitment to co-production means creating meaningful partnerships that drive inclusion and deliver homes truly tailored to those we support.

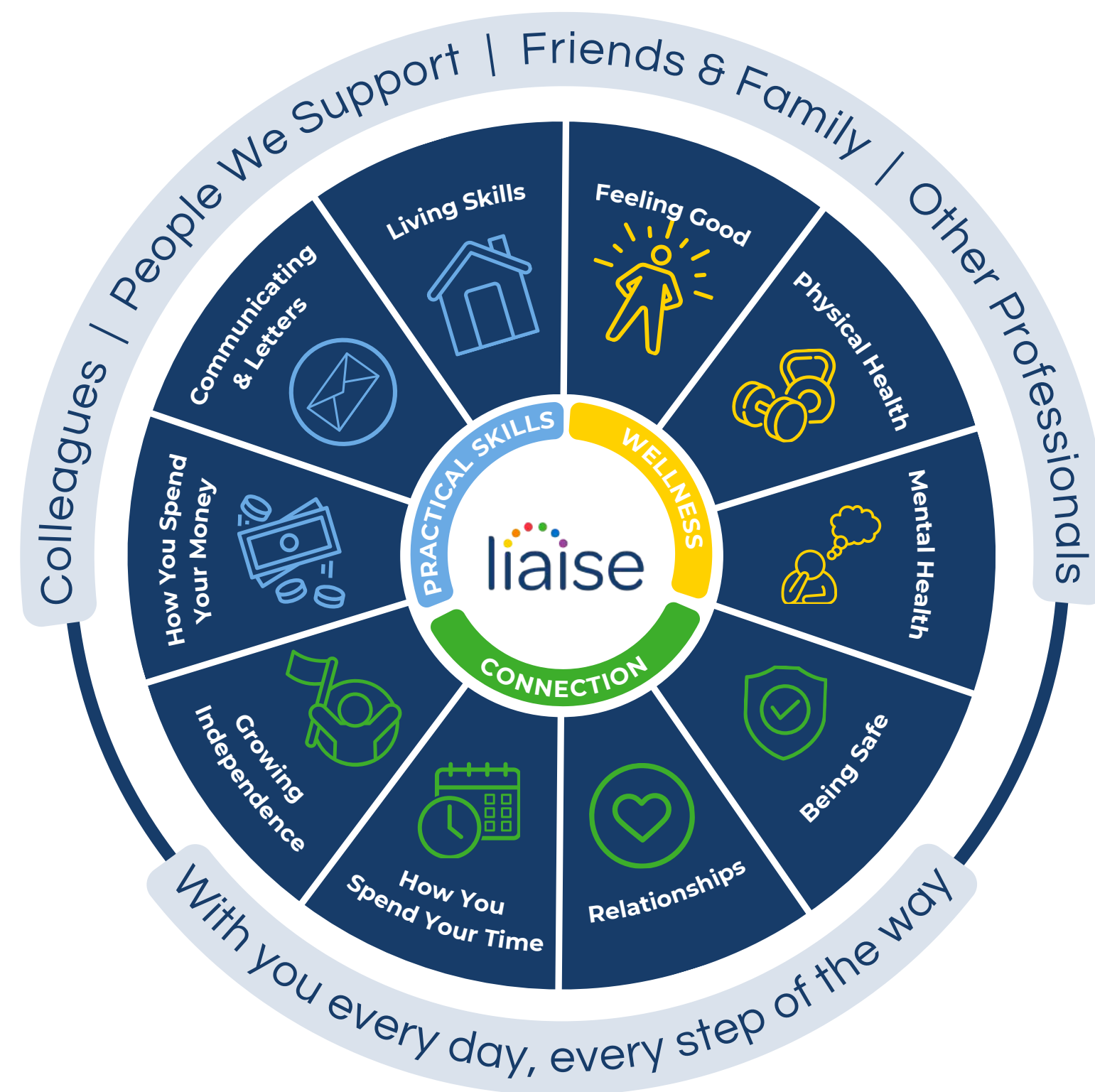


Improving lives

Built on the principles of Positive Behaviour Support (PBS) and Proact-SCIPr-UK training, our approach prioritises respect for individual needs, promotes independence, and ensures safety and well-being.

We go beyond standard care by equipping all team members with specialist PBS training, guided by the expertise of PBS Practitioners, Speech and Language Therapists, and Occupational Therapists. This collaborative approach enables us to deliver high-quality, tailored support that drives meaningful outcomes for the people we support.

Our Outcomes Pathway Model helps us design bespoke care strategies based on each person's hopes, goals, and aspirations.



Outcomes Based Success

When Fred moved to Chingford in August 2023, he faced significant challenges. Coming from a structured, school-based environment to supported living was a considerable change, and with little time for a planned move, it was vital that the team create a calm, consistent setting from day one.

He was used to not doing much with his time, and his first week brought an expected challenge. With support and familiarity from the team and this support plan, his behaviour has improved, and now he's thriving. He regularly attends the local gym and the swimming pool, and has even begun a college course.

The home manager shared, "Everybody is so happy to see where Fred is now. He is calmer and happier since he moved in and is now thriving in the community. We all worked hard, and now he has the biggest smile on his face"

Photo changed



Working Together: Environment, Social and Governance

With Liaise as your partner, you can confidently meet ESG obligations while together we make a tangible difference in the lives of those we support.

- Environmental Responsibility
 - Energy-efficient homes, with heat pump technology and natural light tunnels.
 - Commitment to sustainable procurement and operations.
 - Promoting green practices across our homes and communities.
- Social Impact
 - Measurement of outcomes and goals, to demonstrate impact.
 - Active co-production group to ensure equity and representation.
 - Quality of life improved via high-quality care, skill development, and community engagement.
- Governance Leadership
 - Transparent ESG aligned reporting.
 - Rigorous safeguarding, compliance, and ethical practices.
 - Stakeholder engagement at all levels to ensure accountability and continuous improvement.

To make a referral, call or email

 0330 500 5052

 referrals@liaise.com



Inquiry Received

We will respond within **24 hours** of referral



Assessment

We will arrange an assessment to fully understand the needs of the individual within **5 working days**



Sending An Offer

Following the assessment, we will make an offer within **10 working days**



Invited To View Homes

We encourage you to visit our existing homes or new homes



Transition

We will begin co-produced transition planning once a placement offer has been accepted



Move In

To support a successful transition, we'll offer home visits and stays and we'll review the placement at frequent intervals within the **first three months**

Contact Us



Theresa Cook

Referrals & Placements Manager



referrals@liaise.com



0330 500 5052



<https://liaise.com/referral/>



LiaiseUK



Liaise_UK



LiaiseUK