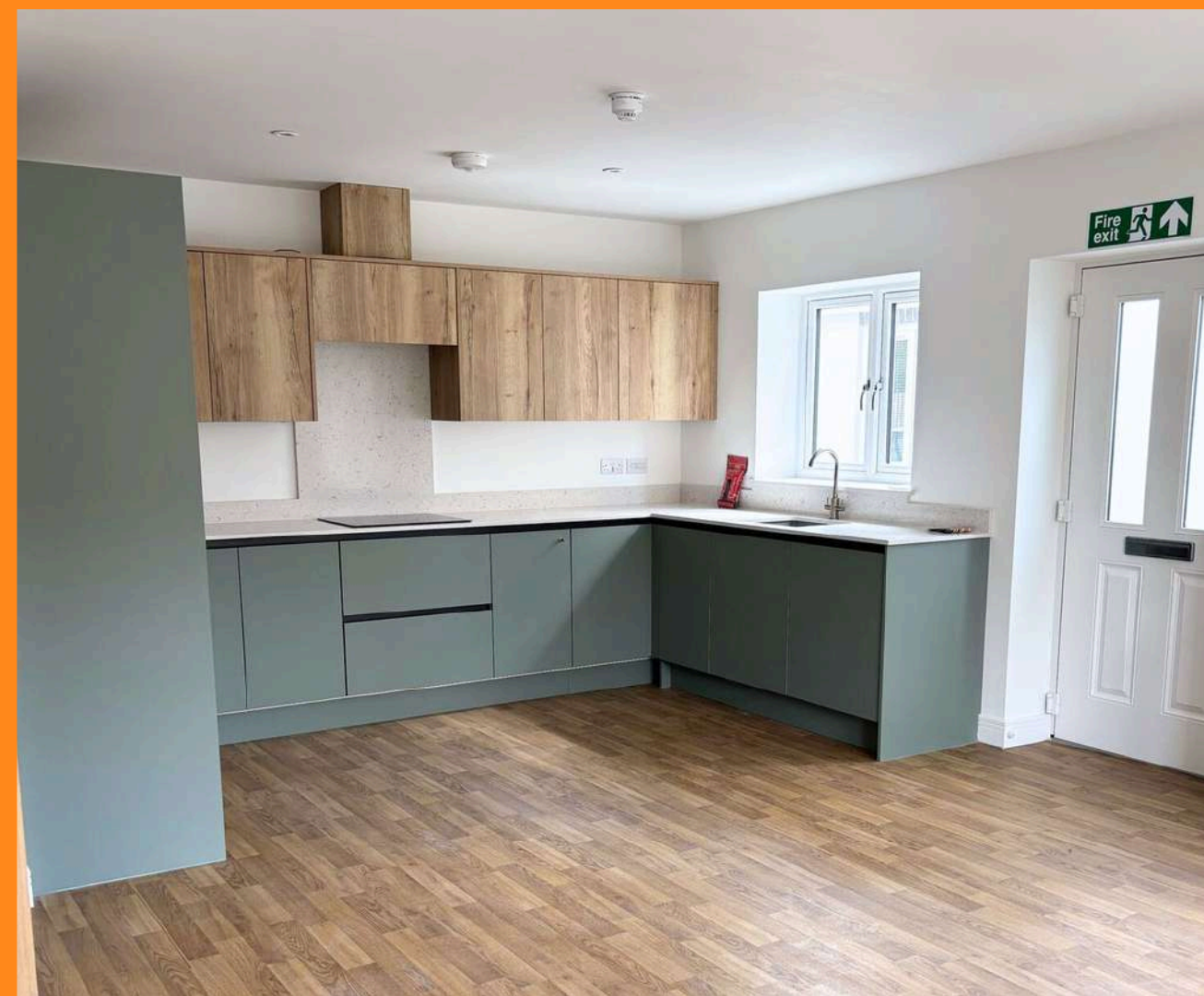




# Peterborough Road

A supported living home in  
Farcet, Cambridgeshire

PE7 3BN





# Experience you can trust, support you can rely on

We provide specialist and bespoke support for adults with learning disabilities, autistic people and individuals with complex needs and behaviours of concern. Our pathway of integrated services includes supported living and residential care across London, the South and East of England.





# Welcome to Peterborough Road

Peterborough Road is a brand new supported-living home in Farcet, Cambridgeshire.

## Why choose Peterborough Road?

- **Comfortable, Connected, and Customised Living:** Enjoy the perfect mix of privacy and community in our self-contained bungalows with private spaces, including individual garden spaces. With private spaces, the bungalows are wheelchair friendly and support a secondary bedroom or sensory room for extra comfort.
- **Co-Produced, Person-Centred Support:** Shaped by people with lived experience through our Influencers Group, we build care plans around each person's strengths and goals - like supporting someone with a passion for art to lead classes, boosting confidence and inspiring others.

**Expert, Caring Team:** All our staff are trained in Positive Behaviour Support (PBS) and Proact-SCIPr-UK. Each person we support has a tailored PBS plan, with input from our in-house PBS Practitioners, Speech and Language Therapists, and Occupational Therapists, promoting safety, independence, and progress.



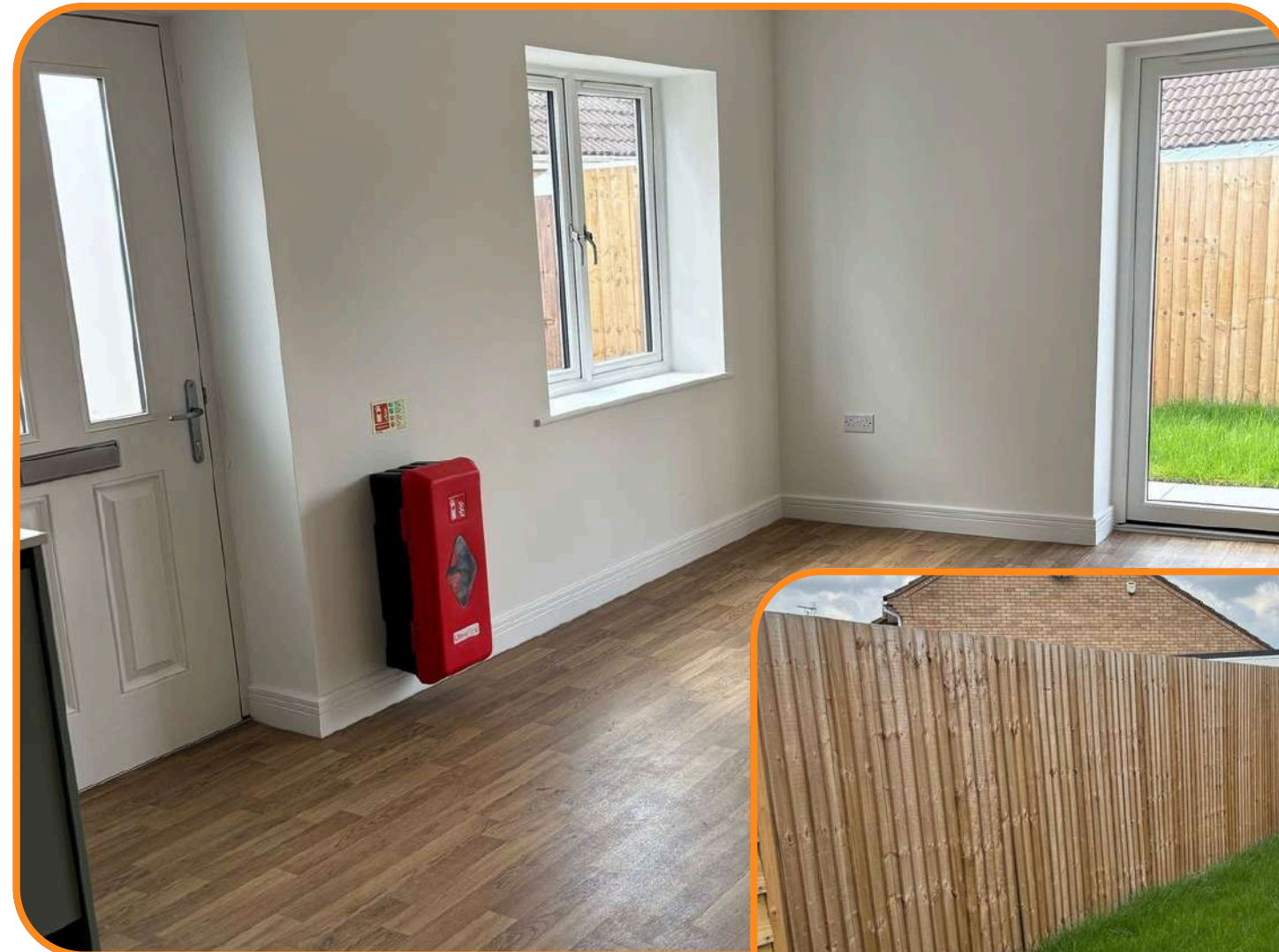
Peterborough Road - [Google Maps](#)



# Bungalow Information

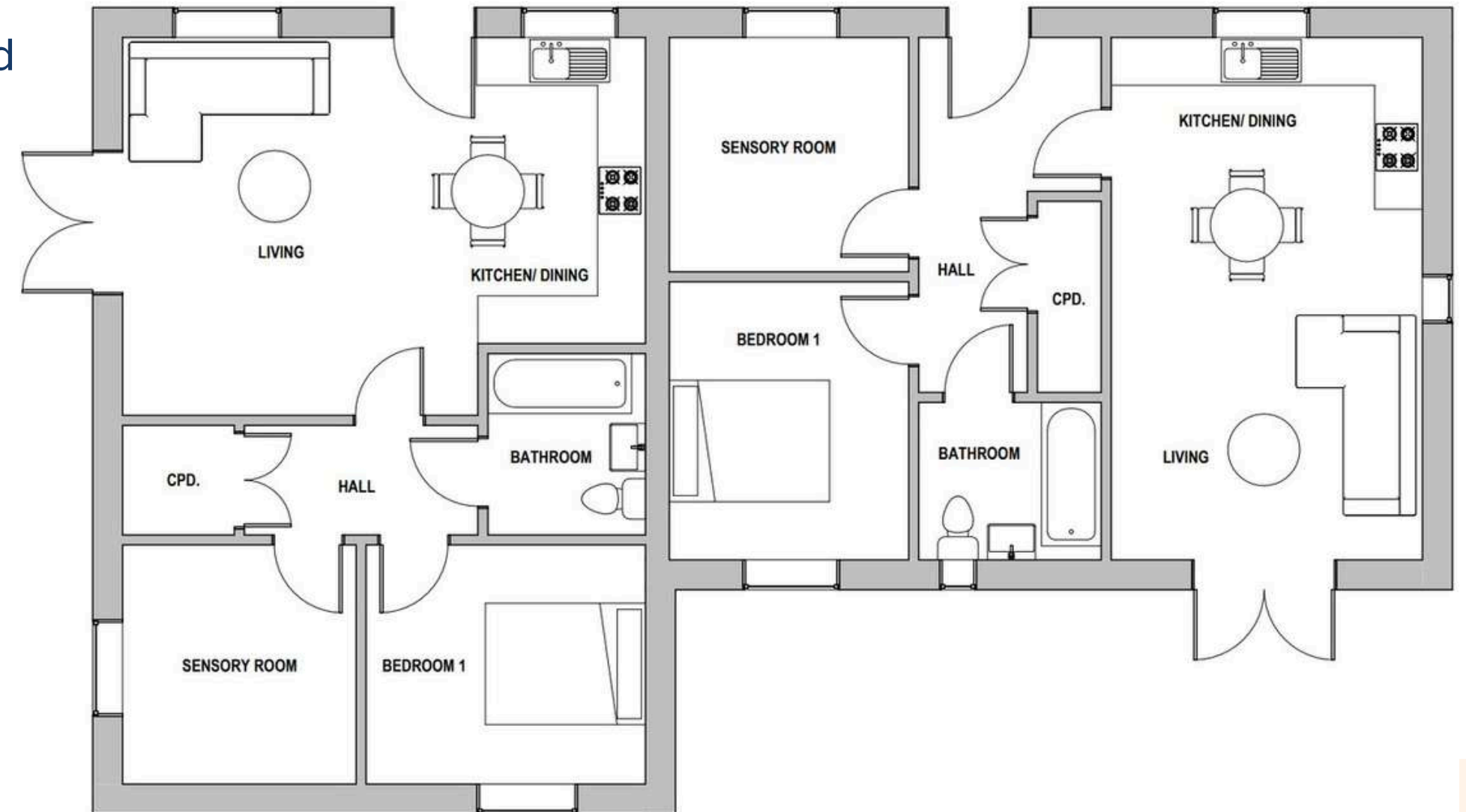
Each bungalow has

- **Bedrooms:** There are two bedrooms, which one can be used as a secondary room or sensory room for extra comfort. The bedrooms are unfurnished.
- **Private Bathrooms:** There is a separate bathroom next to the bedroom. These can be altered to provide extra support.
- **Private Communal Area:** It includes an open-plan kitchenette and lounge area. White goods are provided and installed in the kitchen.
- **Individual Gardens:** The bungalow has its own private garden space for daily activities or space for relaxation.
- **Wheelchair Accessible:** The entire bungalow is wheelchair-friendly and can be altered to provide more support.



# Bungalow 1 and 2

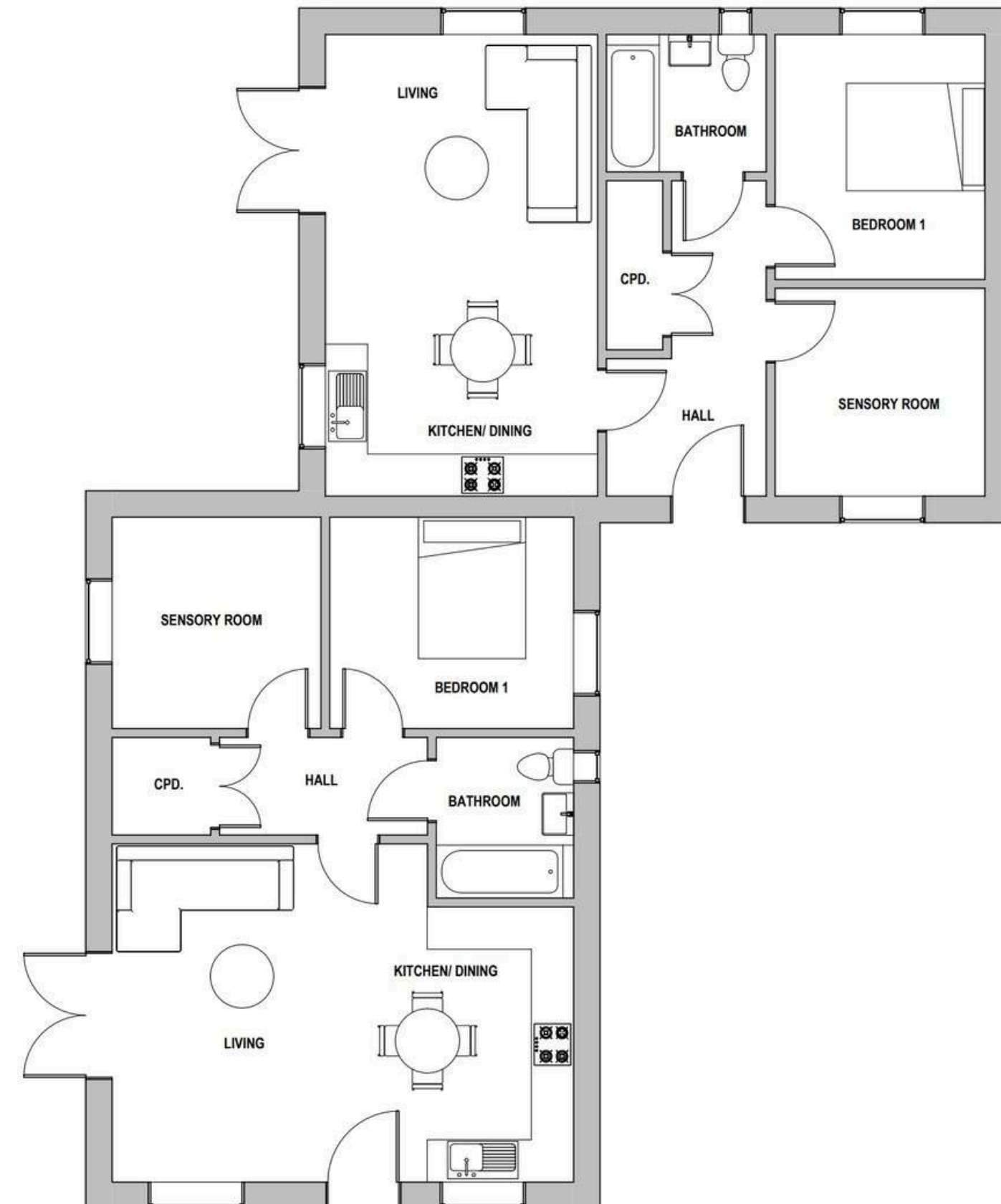
- Each bungalow has its own front door, open-plan fitted kitchen and lounge, and bathroom
- Each bungalow is approximately 60m<sup>2</sup>
- One bedroom in each bungalow with an additional bedroom/sensory room
- Wheelchair accessible home
- Private garden space
- Two parking spaces per bungalow



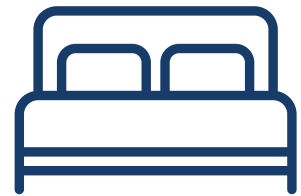


# Bungalow 3 and 4

- Each bungalow has its own front door, open-plan fitted kitchen and lounge, and bathroom
- Each bungalow is approximately 60m<sup>2</sup>
- One bedroom in each bungalow with an additional bedroom/sensory room
- Wheelchair accessible home
- Private garden space
- Two parking spaces per bungalow



# Features



Private bedroom



En-suite bathroom



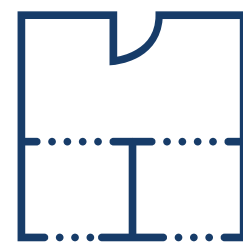
Supported living



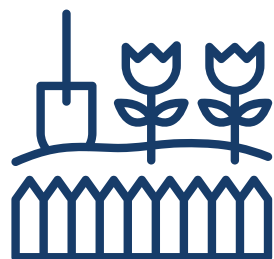
Off-street parking



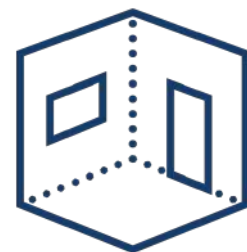
Open-plan fitted kitchen and lounge



4x Self-contained bungalows



Private individual garden



Second bedroom / Sensory room



Wheelchair accessible

# Benefits



Staff on-site 24/7 & Registered Manager on-site



Positive Behaviour Support (PBS)



Person-centred care



Proact-SCIPr training



Outcomes-based support



Personal skill development



Regional support network



Speech and language therapy



Social landlord

# Meet the team



**Lisa**, Regional General Manager for East Anglia and the Midlands

Lisa joined Liaise in November 2024, bringing over 30 years of experience in Learning Disabilities and Autism. Starting as a support worker, she quickly advanced to leadership roles, including Head of Operations for a Cambridgeshire charity. With 25 years of management experience across various sectors, Lisa is passionate about empowering individuals.



**Bola**, Registered Manager at Peterborough Road

Bolanle Tofowomo, Peterborough Road's Registered Home Manager With five years of experience in the care industry, Bola is passionate about supporting adults with learning disabilities and other needs. She fosters a positive, open environment where individuals feel valued and empowered. A skilled listener and communicator, Bola is dedicated to meeting each person's unique needs with care and understanding.

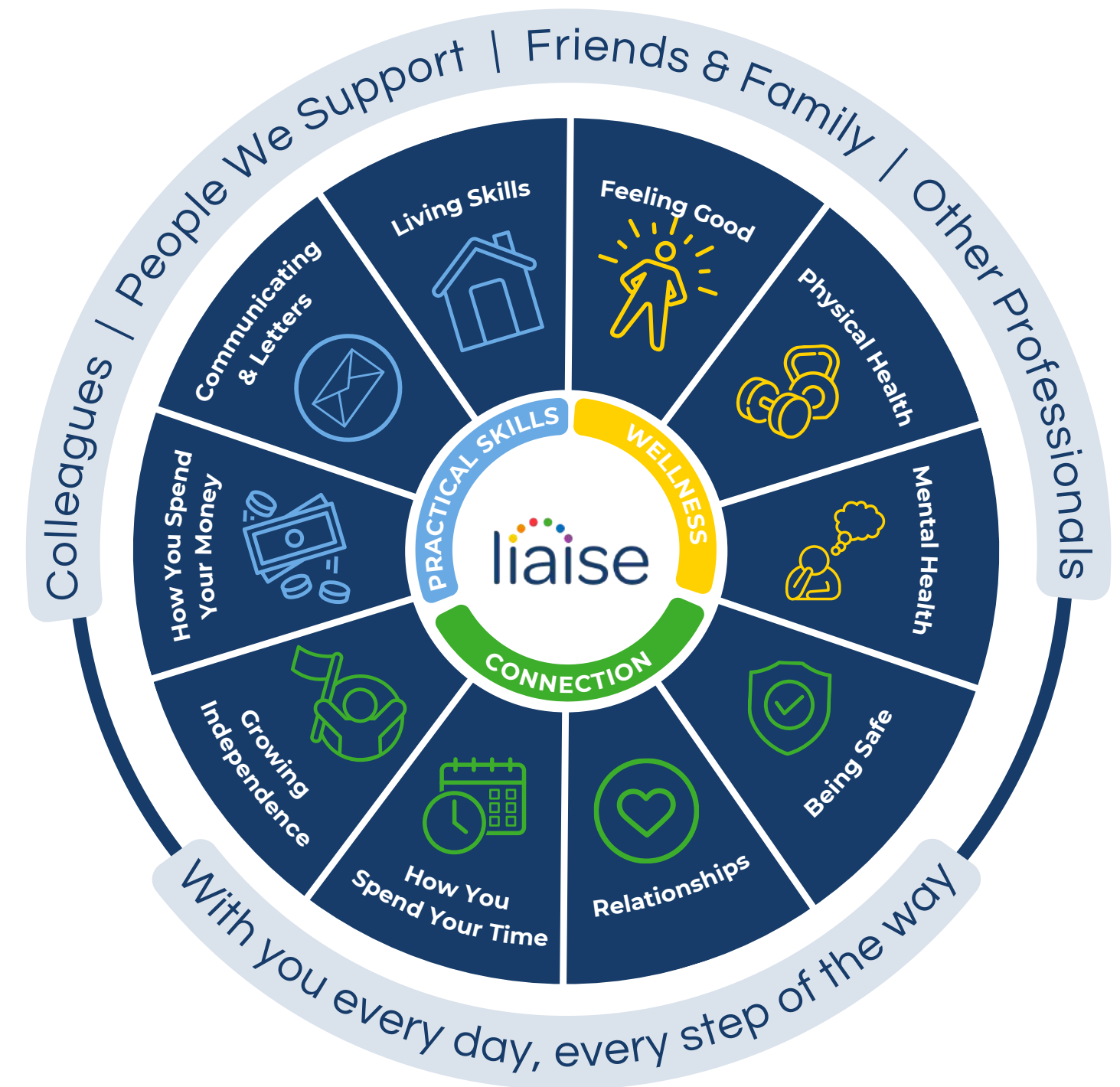


# Improving Lives

Built on the principles of Positive Behaviour Support (PBS) and Proact-SCIPr-UK training, our approach prioritises respect for individual needs, promotes independence, and ensures safety and well-being.

We go beyond standard care by equipping all team members with specialist PBS training, guided by the expertise of PBS Practitioners, Speech and Language Therapists, and Occupational Therapists. This collaborative approach enables us to deliver high-quality, tailored support that drives meaningful outcomes for the people we support.

Our innovative Outcomes Pathway Model (right) helps us design bespoke care strategies based on each person's unique hopes, goals, and aspirations.



# Outcomes That Matter



## Supporting Independence With A Car

For Alan\*, getting out and about, especially for long walks, has always been something he enjoys. But when trips weren't within walking distance, things became complicated. Relying on taxis was expensive and frustrating, especially when Alan had to wait around after an activity. Once he's finished, he prefers to head home straight away, and delays often made outings more stressful than fun.

Getting his own car has changed everything. It's not just about getting from A to B, Alan finds calm in simply sitting and listening to music. With his car, he's now more independent, less reliant on taxis, and able to enjoy the freedom to go where he wants, when he wants.

*\*photo changed for privacy*



# Working Together: Environment, Social and Governance

With Liaise as your partner, you can confidently meet ESG obligations while together we make a tangible difference in the lives of those we support.

- Environmental Responsibility
  - Energy-efficient homes, with heat pump technology and natural light tunnels.
  - Commitment to sustainable procurement and operations.
  - Promoting green practices across our homes and communities.
- Social Impact
  - Measurement of outcomes and goals, to demonstrate impact.
  - Active co-production group to ensure equity and representation.
  - Quality of life improved via high-quality care, skill development, and community engagement.
- Governance Leadership
  - Transparent ESG aligned reporting.
  - Rigorous safeguarding, compliance, and ethical practices.
  - Stakeholder engagement at all levels to ensure accountability and continuous improvement.



## Theresa Cook

Referrals & Placement Manager



[referrals@liaise.com](mailto:referrals@liaise.com)



0330 500 5052



[LiaiseUK](#)



[Liaise\\_UK](#)



[LiaiseUK](#)