



# Marlow

Our residential care home in  
Worthing, West Sussex

BN11 3HS



Inspected and rated

Good





# Experience you can trust, support you can rely on

We provide specialist and bespoke support for adults with learning disabilities, autistic people and individuals with complex needs and behaviours of concern. Our pathway of integrated services includes supported living and residential care across London, the South and East of England.





# Welcome to Marlow

Marlow is a comforting and calming residential home near Worthing's town centre.

## Why choose Chantry?

- **Comfortable, Connected, and Tailored Living:** Our home offers spacious rooms, shared social spaces, and calming environments designed around individual needs. Nearby amenities include the Worthing town centre and nearby Brighton. Regular trains provide easy access to Central London, Brighton and the southern English coast.
- **Co-Produced, Person-Centred Support:** Shaped by people with lived experience through our Influencers Group, we build care plans around each person's strengths and goals - like supporting someone with a passion for art to lead classes, boosting confidence and inspiring others.

**Expert, Caring Team:** All our staff are trained in Positive Behaviour Support (PBS) and Proact-SCIPr-UK. Each person we support has a tailored PBS plan, with input from our in-house PBS Practitioners, Speech and Language Therapists, and Occupational Therapists, promoting safety, independence, and progress.



Marlow: [Google Maps](#)

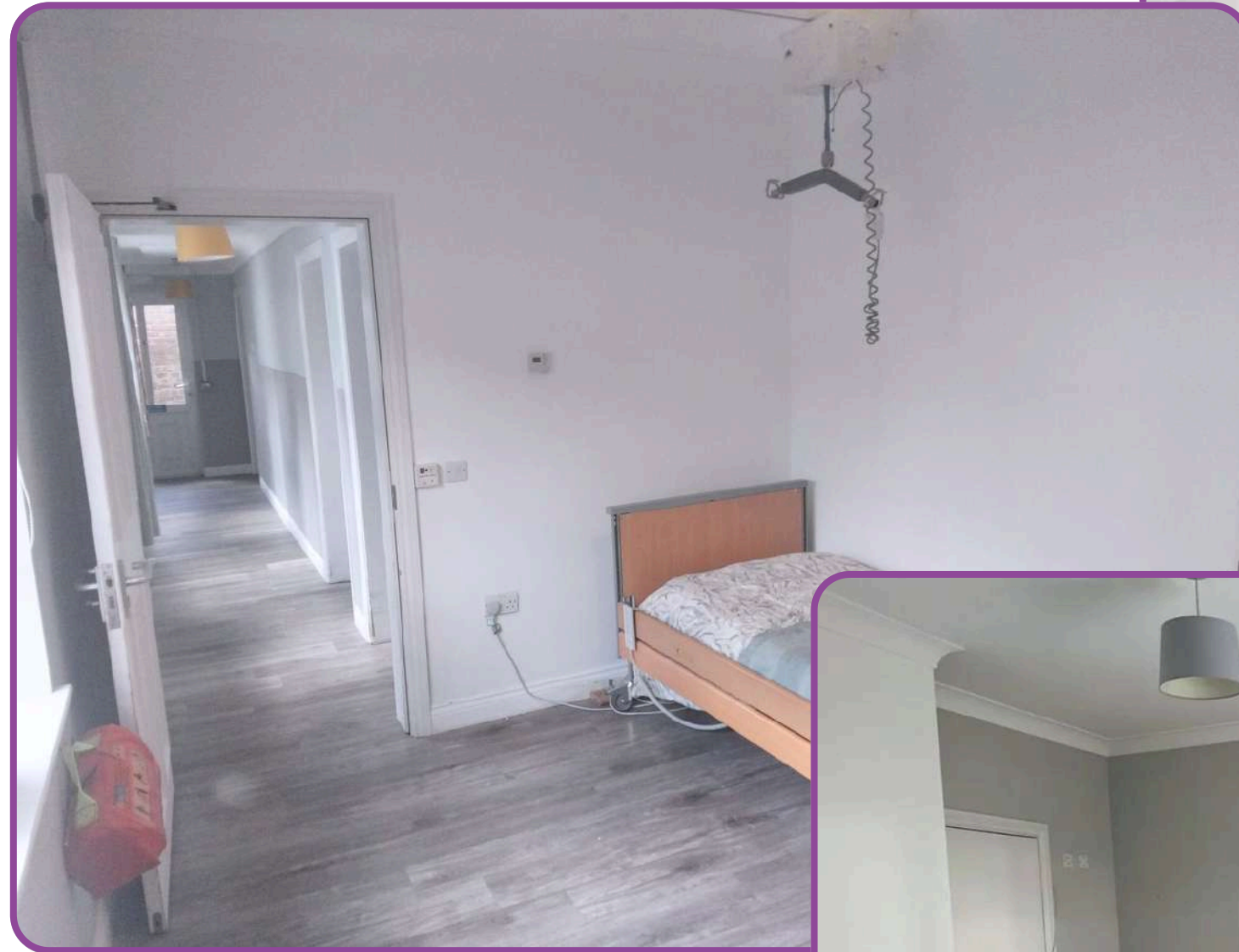


# Room information

## Room 11

This ground-floor vacant room includes

- **Semi-Furnished Bedroom:** Includes an adjustable single bed, a ceiling tracking hoist, and a dresser.
- **Ceiling Hoist:** A ceiling-mounted, trackable hoist designed to support safe and dignified transfers between the bed and wheelchair.
- **Private En-Suite Wetroom:** With a sink, toilet and a shower area
- **View:** Plenty of natural light with a view of the garden area.





# Room information

## Room 4

This first-floor vacant room includes

- **Fully-Furnished Bedroom:** large bedroom with a single bed, two wardrobes and a dresser. There is a 24-hour call system available for any immediate assistance.
- **Ceiling Hoist:** A ceiling hoist is available to support safe and comfortable movement between the bedroom and the wetroom.
- **Private En-Suite Wetroom:** With a sink, toilet and a shower area
- **Shared spaces:** The unit of the bedroom is shared among three other individuals, but the bedroom is a private space.



# Features



Private bedroom



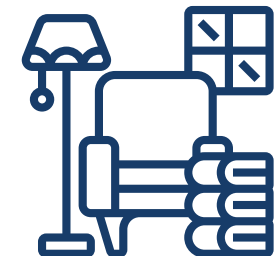
En-suite  
bathroom/wetroom



Residential home



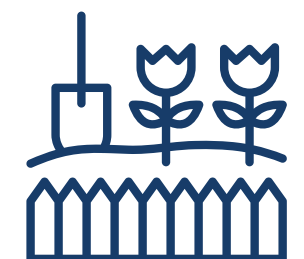
By the beach



Shared communal  
areas



Sensory room



Shared garden



Wheelchair accessible



Suburban location

# Benefits



Staff on-site 24/7



Positive Behaviour  
Support (PBS)



Person-centred care



Proact-SCIPr training



Outcomes-based support



Personal skill  
development



Regional support network



Near local amenities



Registered manager  
on site



# Meet the team



**Suzanne**, Regional General Manager for London and the South East Region

Suzanne offers over 28 years of social care experience, including leadership roles at Active Care Group. Dedicated to achieving exceptional outcomes for individuals, Suzanne leads by example, transforming care and fostering supportive environments for both those we support and her colleagues.



**Stephanie**, Operations Manager for the South East Region

Stephanie's background includes leading a 26-bed nursing service for Voyage Care. She is committed to collaboration and teamwork, ensuring the people we support receive high-quality care with dignity and respect, always striving to deliver the best possible outcomes.



**Steve**, Registered Manager at Marlow

After a career in the building industry, Steve semi-retired in 2012, picking up a part-time role as a support worker, and quickly realised he'd been on the wrong career path. As a devoted family man, Steve loves supporting people and likes to think that the people he supports and the staff team feel like a big family all working towards the same goal: to ensure we all live our best lives.

“Thank you so much for supporting our loved one yesterday and coming to the meeting  
**Family Member**

“Handled a challenging situation with professionalism and care, working closely with both family and healthcare professionals while advocating for the best interests of those we support. A great example of safeguarding in action.  
**Social Care Professional**

# Co-production

We're proud to have an established Influencers Group, made up of supported individuals from our homes. This group plays a pivotal role in shaping our plans, ensuring they are genuinely aligned with the needs and aspirations of all those living in a Liaise home.

By listening to people with lived experience, we bring an enriched, authentic perspective to everything we do. From policy and practice reviews to designing new homes, their voices directly influence our approach to key working, goal setting, and designing services.

Our commitment to co-production means creating meaningful partnerships that empower individuals, drives inclusion, and deliver homes truly tailored to those we support. Together with our Influencers, we're making Liaise the best possible place to live - a place where everyone's voice shapes the future.



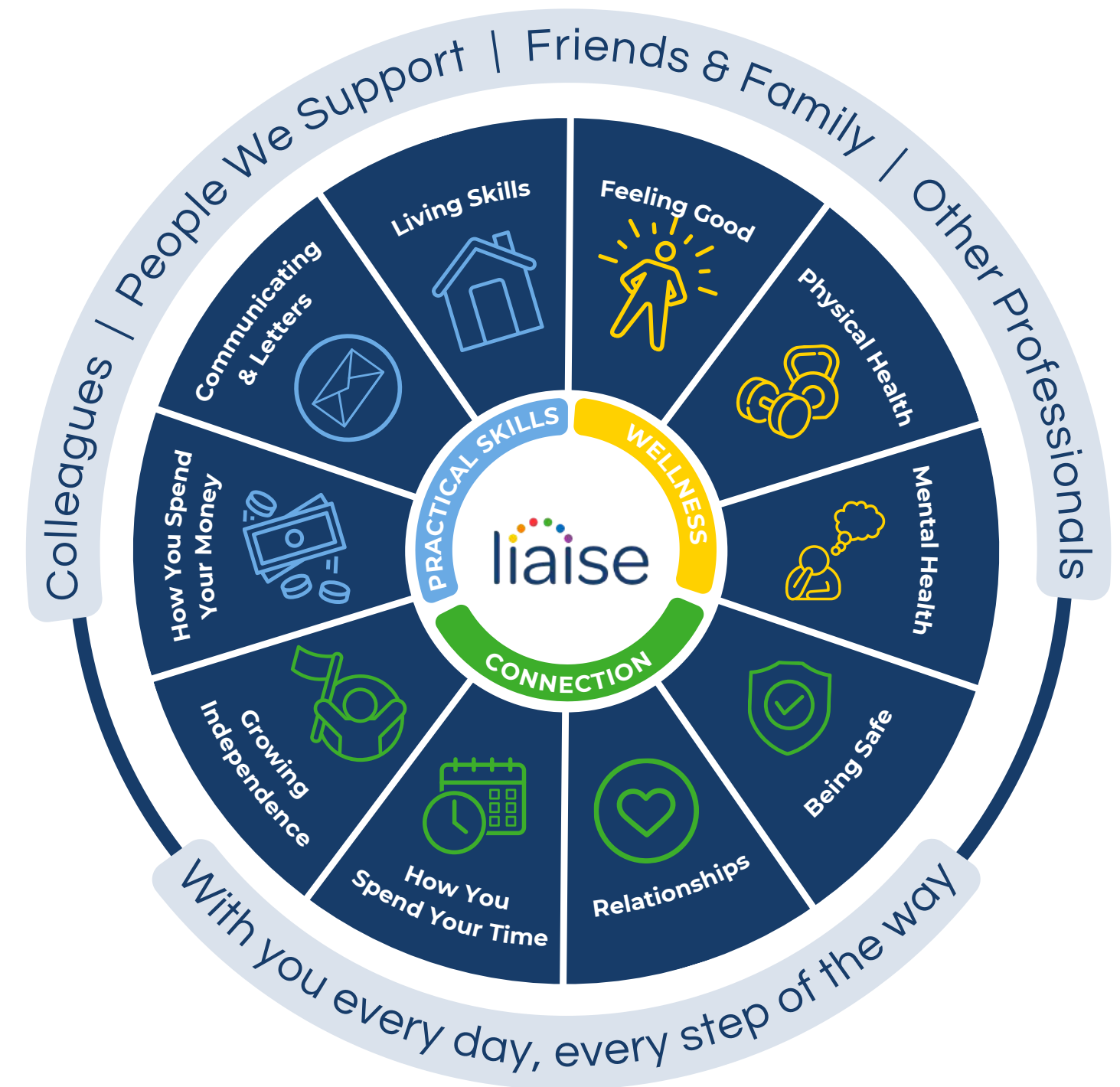


# Improving Lives

Built on the principles of Positive Behaviour Support (PBS) and Proact-SCIPr-UK training, our approach prioritises respect for individual needs, promotes independence, and ensures safety and well-being.

We go beyond standard care by equipping all team members with specialist PBS training, guided by the expertise of PBS Practitioners, Speech and Language Therapists, and Occupational Therapists. This collaborative approach enables us to deliver high-quality, tailored support that drives meaningful outcomes for the people we support.

Our innovative Outcomes Pathway Model (right) helps us design bespoke care strategies based on each person's unique hopes, goals, and aspirations.



# Working Together: Environment, Social and Governance

With Liaise as your partner, you can confidently meet ESG obligations while together we make a tangible difference in the lives of those we support.

- Environmental Responsibility
  - Energy-efficient homes, with heat pump technology and natural light tunnels.
  - Commitment to sustainable procurement and operations.
  - Promoting green practices across our homes and communities.
- Social Impact
  - Measurement of outcomes and goals, to demonstrate impact.
  - Active co-production group to ensure equity and representation.
  - Quality of life improved via high-quality care, skill development, and community engagement.
- Governance Leadership
  - Transparent ESG aligned reporting.
  - Rigorous safeguarding, compliance, and ethical practices.
  - Stakeholder engagement at all levels to ensure accountability and continuous improvement.



# Outcomes That Matter

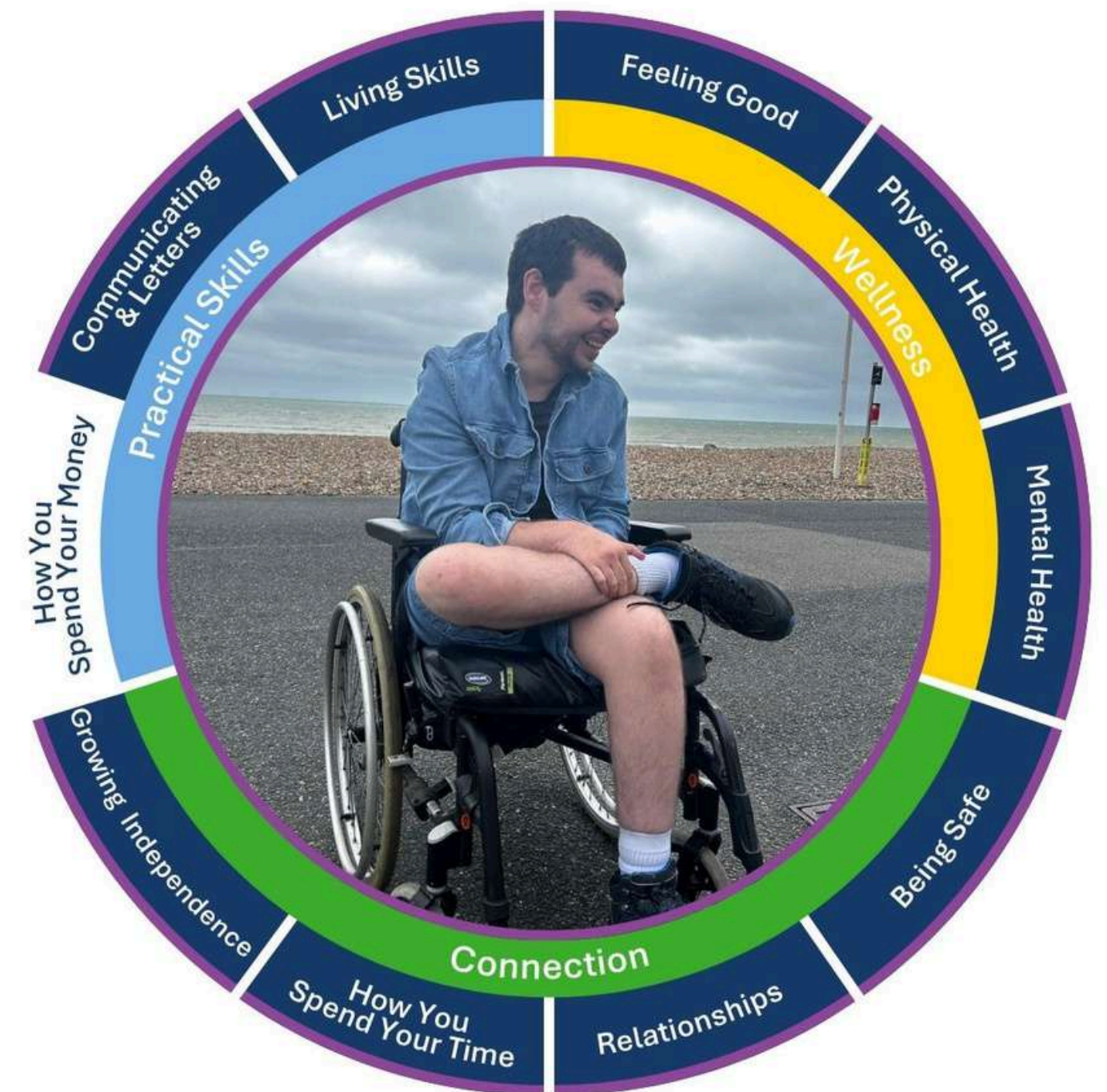
Our Outcomes Pathway empowers people to thrive by focusing on 10 key areas of wellbeing. It helps us set meaningful goals with the individuals we support and deliver personalised care that leads to real, lasting change.

## Bradley's Journey From Fear to Friendship

At Marlow, we celebrate every step forward, and Bradley's journey has been nothing short of inspiring. Living with autism and carrying the weight of past trauma, he once found social interactions overwhelming. Being around others, eating at the dining table, and engaging in conversations felt impossible. But today, those struggles are part of his past.

Bradley now enjoys sharing meals with friends, chatting with staff, and embracing new experiences. Whether walking among the animals on the farm or lending a hand with daily tasks, he is stepping into a more confident and fulfilling life.

Going out and having fun is what he loves most. Making new friends and traveling by public transport has become his passion. Every journey he takes is another step toward greater independence, proving that with the right support, courage, and determination, incredible progress is possible.





## Theresa Cook

Referrals & Placement Manager



[referrals@liaise.com](mailto:referrals@liaise.com)



0330 500 5052



[LiaiseUK](#)



[Liaise\\_UK](#)



[LiaiseUK](#)