



Walker House

Andover, Hampshire

A New Residential Care
Development





Experience you can trust, support you can rely on

We provide specialist and bespoke support for adults with learning disabilities, autistic people and individuals with complex needs and behaviours of concern. Our pathway of integrated services includes supported living and residential care across London, the South and East of England.

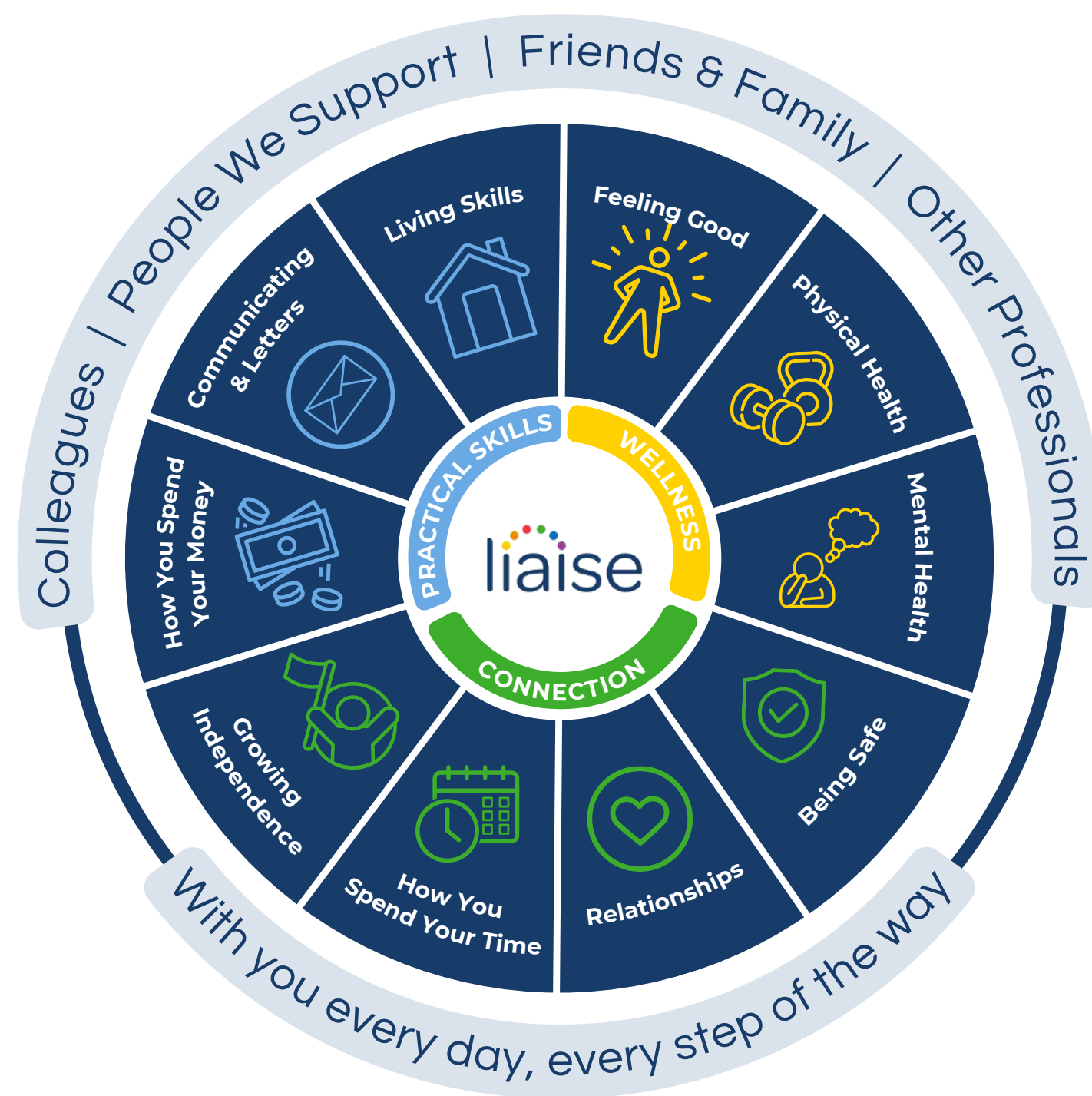


Improving Lives

Built on the principles of Positive Behaviour Support (PBS) and Proact-SCIPr-UK training, our approach prioritises respect for individual needs, promotes independence, and ensures safety and well-being.

We go beyond standard care by equipping all team members with specialist PBS training, guided by the expertise of PBS Practitioners, Speech and Language Therapists, and Occupational Therapists. This collaborative approach enables us to deliver high-quality, tailored support that drives meaningful outcomes for the people we support.

Our innovative Outcomes Pathway Model (right) helps us design bespoke care strategies based on each person's unique hopes, goals, and aspirations.



Co-production

We're proud to have an established Influencers Group, made up of supported individuals from our homes. This group plays a pivotal role in shaping our plans, ensuring they are genuinely aligned with the needs and aspirations of all those living in a Liaise home.

By listening to people with lived experience, we bring an enriched, authentic perspective to everything we do. From policy and practice reviews to designing new homes, their voices directly influence our approach to key working, goal setting, and designing services.

Our commitment to co-production means creating meaningful partnerships that empower individuals, drives inclusion, and deliver homes truly tailored to those we support. Together with our Influencers, we're making Liaise the best possible place to live - a place where everyone's voice shapes the future.



Overview

This new development is located in the town of Andover, Hampshire. Walker House will be refurbished in line with national standards and NICE guidelines, offering a variety of communal areas for the 5-bed home.

The home will provide specialist care and support for adults with learning disabilities, autistic people and individuals with complex needs and behaviours of concern. Each bedroom can be tailored to meet specific requirements, including adaptations such as wet rooms or baths, robust furniture, and personalised paint colours to create a truly bespoke living environment.

With its high-acuity service offering, the home is designed to support people with complex care needs, ensuring the highest quality of care and a supportive, enabling environment.



Meet the team



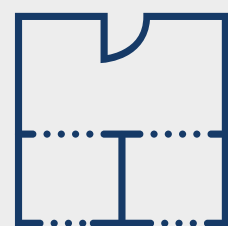
Brad, Regional General Manager for the South Region

With 25+ years in the learning disability sector, Brad has held senior roles across care homes, supported living, and brain injury services. Passionate about working in partnership, he focuses on delivering person-centred support that ensures safety and helps individuals live their best lives.



Alexandra, the South Region's Operations Manager

Alex's journey with Liaise began in 2013 as a deputy manager for Sansa House and over time has become a Registered Manager and an Area Manager. Her dedication and passion have propelled her to the role of Operations Manager, overseeing homes in Basingstoke and Hampshire. Her experience fuels her commitment to empowering people to thrive.



5x bed home



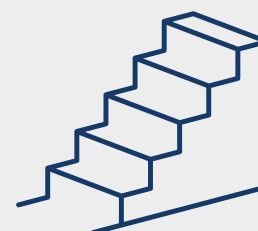
Spacious bedroom



Supported Living home



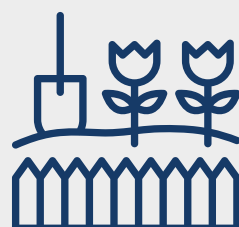
Private off-street parking available



Two internal staircase access to first floor



Shared communal areas



Private Garden access



Private bathroom/wetroom



Rural location



Staff on-site 24/7 &
Registered manager on-site



Positive Behaviour
Support (PBS)



Outcomes-based
support



Proact-SCIPr
training



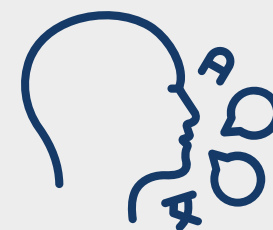
Person-centred care



Registered social
landlord



Regional support
network



Speech and
language therapy



Personal skill
development



Reduced ligature design



Robust safety windows



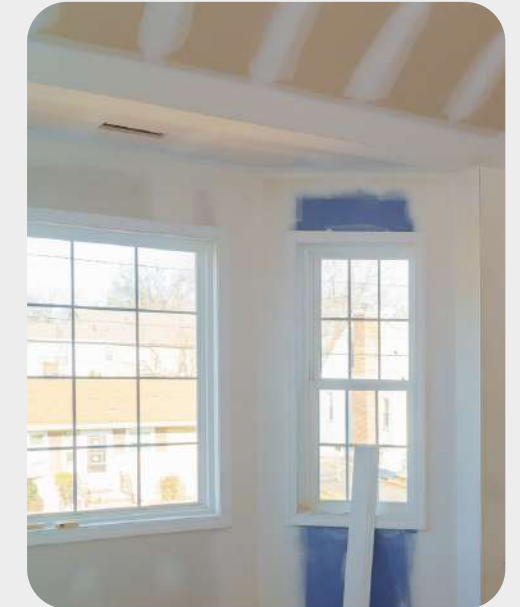
DDA compliant



Independent apartment design



Bespoke bathroom or wetroom



Increased sound-proofing



Dimmable lighting



Natural light tunnels



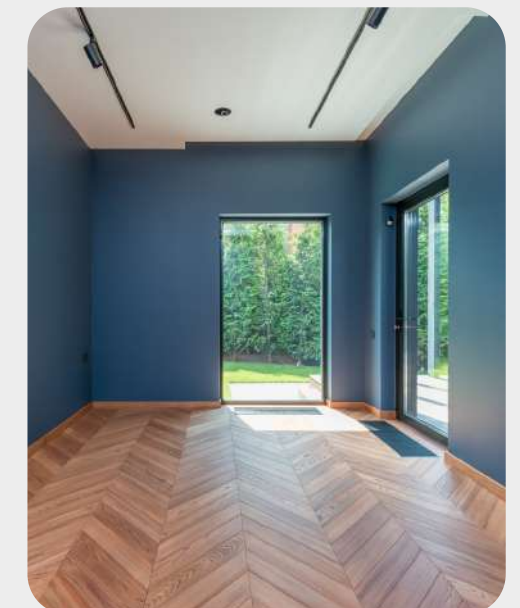
Lockable meds / COSH space



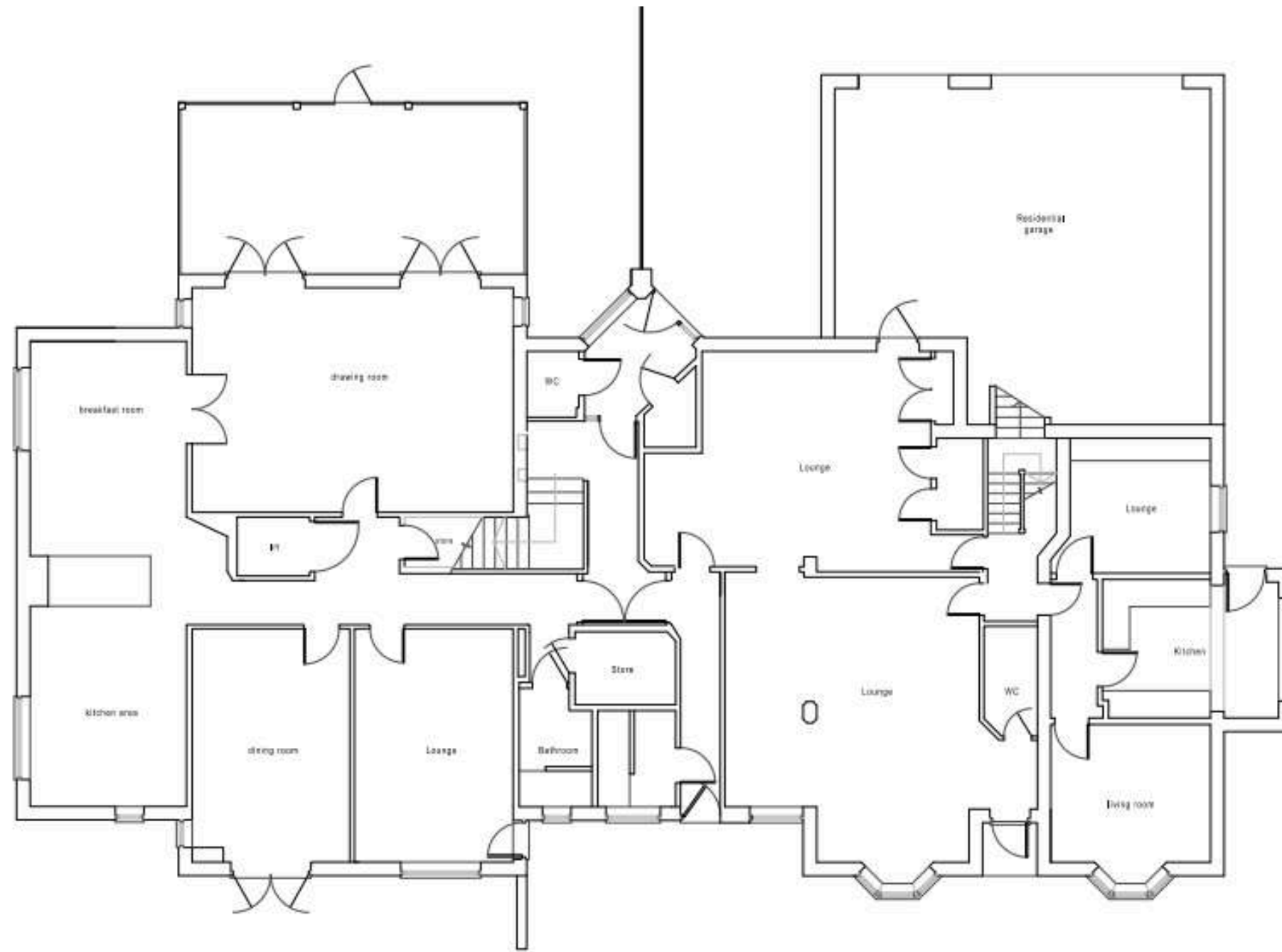
Robust interior doors



Additional wall reinforcement



Bespoke paint finish



Ground Floor

Total Internal floor
area A=345m²

Ground floor

- Two kitchen areas
- Six lounge rooms, can be used for different purposes
- Two internal staircase access to the first floor
- Lift access to the first floor (left side)
- Private garden access behind the building
- Private off-street parking for individuals and visitors

First Floor

- Separated first floors
- Two internal staircase access to the ground-floor
- Lift access to ground floor (left side)
- Left side proposed 4 bedrooms;
 - Two en-suite bedrooms
 - Two private bedroom with shared bathroom
- Right side proposed two en-suite bedrooms



First Floor

Total internal floor
area $A = 175\text{m}^2$

Working Together: Environment, Social and Governance

With Liaise as your partner, you can confidently meet ESG obligations while together we make a tangible difference in the lives of those we support.

- Environmental Responsibility
 - Energy-efficient homes, with heat pump technology and natural light tunnels.
 - Commitment to sustainable procurement and operations.
 - Promoting green practices across our homes and communities.
- Social Impact
 - Measurement of outcomes and goals, to demonstrate impact.
 - Active co-production group to ensure equity and representation.
 - Quality of life improved via high-quality care, skill development, and community engagement.
- Governance Leadership
 - Transparent ESG aligned reporting.
 - Rigorous safeguarding, compliance, and ethical practices.
 - Stakeholder engagement at all levels to ensure accountability and continuous improvement.

Outcomes Based Success

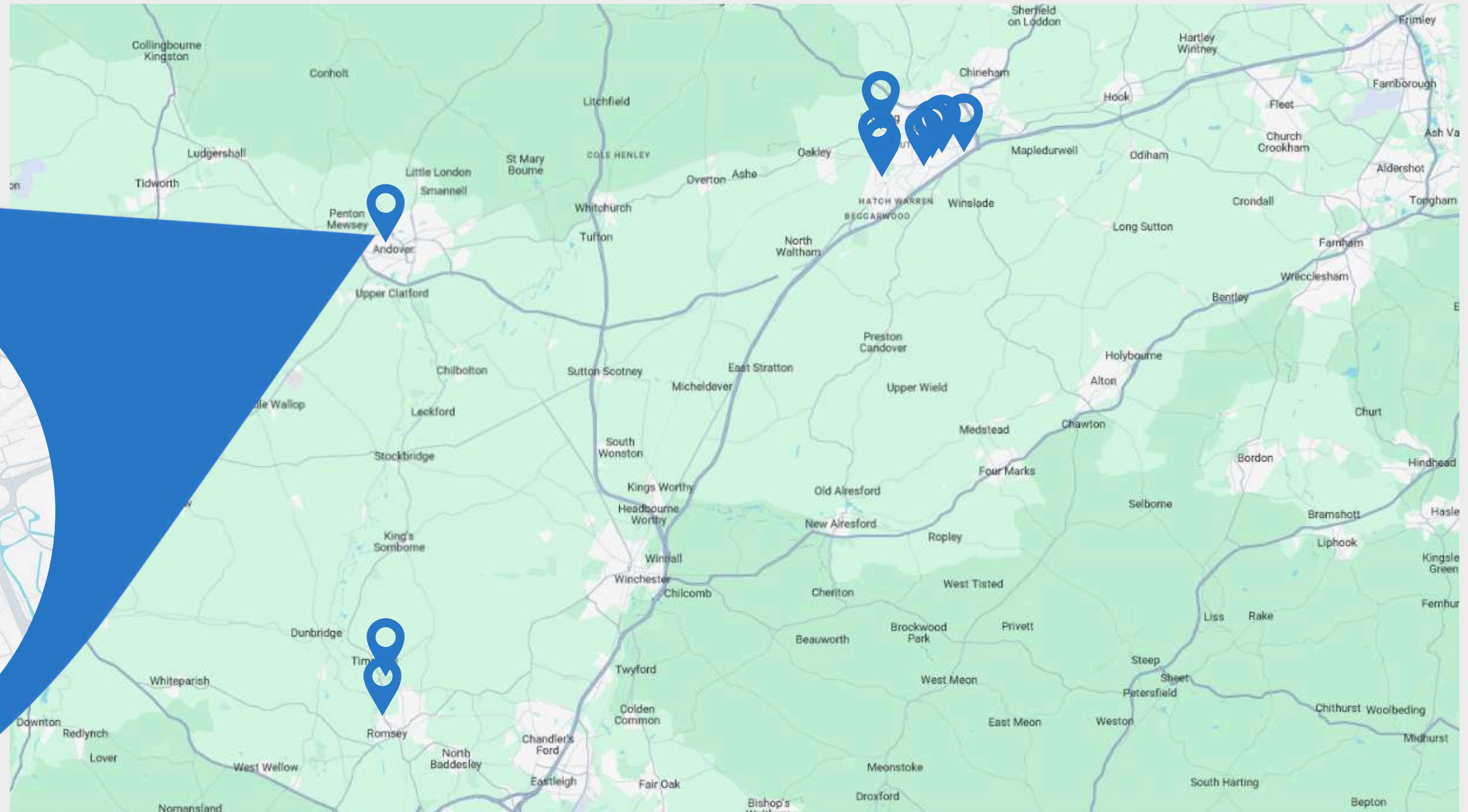


Charlotte's Move to Cornfields: A Joyful New Beginning

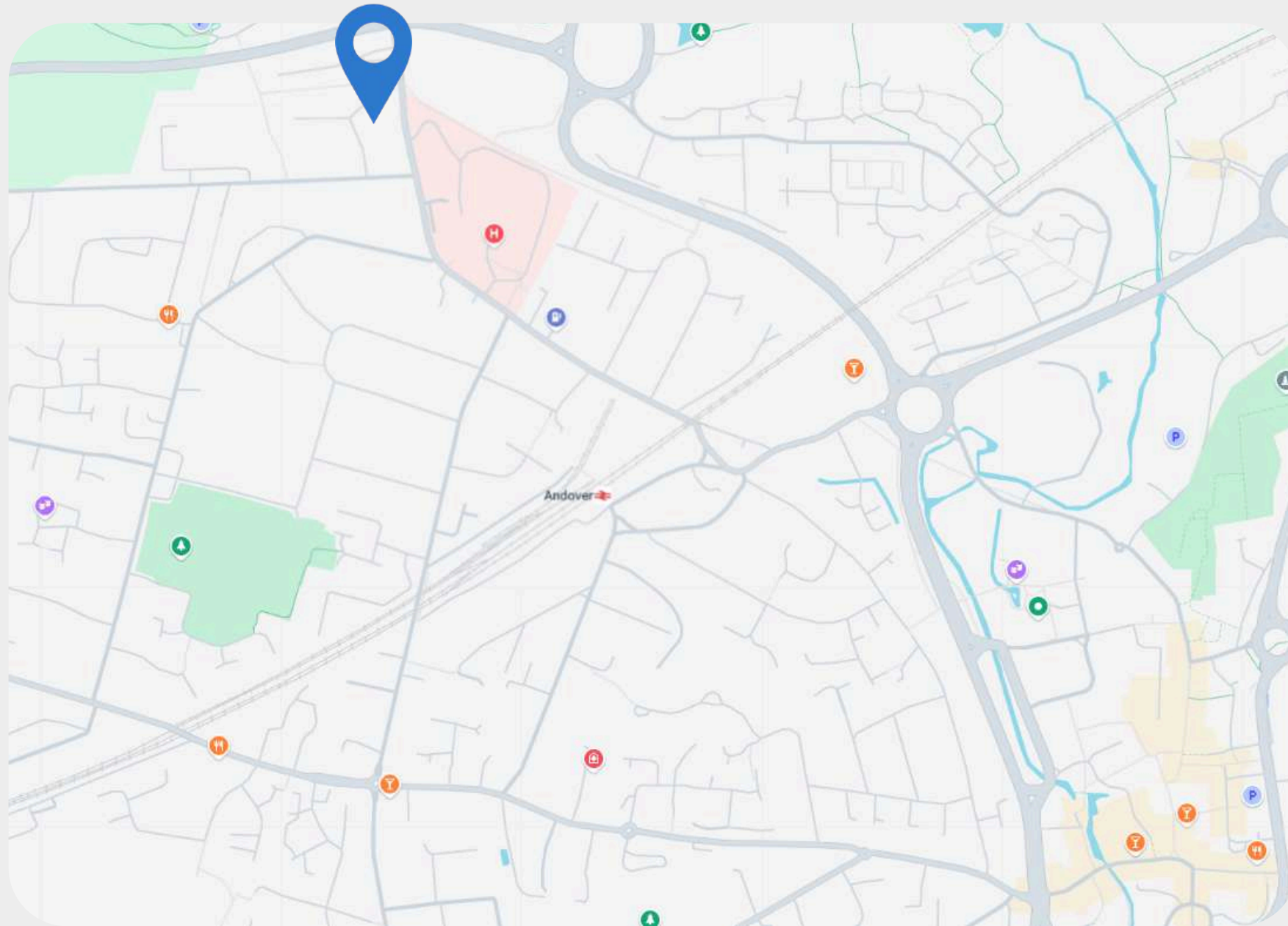
Charlotte is one of the people that has recently moved into a Liaise home. Charlotte was assessed earlier this year, and it was clear from the start that she would be a perfect fit for Cornfields. She came to visit the home a couple of weeks later, which also happened to be her birthday! Charlotte instantly loved the kitchen and her future bedroom, and by the end of her visit, she told us she would love to live here.

<https://liaise.com/charlottes-move-to-cornfields-a-joyful-new-beginning/>

Regional Support Network



Location



Andover is located in the town of Andover in Hampshire, offering individuals a township environment with rural themes. A short distance away is the town centre offering local amenities such as a shopping centre as well as a train station with services to Basingstoke, Salisbury, Southampton and London Waterloo.

The home would be part of our South region, which has a support network, a 30-minute drive away from our other homes in Basingstoke and Romsey.



Chelsea Chard
Referrals Partner

 chelsea.chard@liaise.com

 0330 500 5052

 [LiaiseUK](#)

 [Liaise_UK](#)

 [LiaiseUK](#)