



Totteridge House

Our residential care home in
High Wycombe, Buckinghamshire

HP13 7LW



External Audit Report

Rated Good



Experience you can trust, support you can rely on

We provide specialist and bespoke support for adults with learning disabilities, autistic people and individuals with complex needs and behaviours of concern. Our pathway of integrated services includes supported living and residential care across London, the South and East of England.



Welcome to Totteridge House

Totteridge House is a socialable and close-knit home in High Wycombe, Buckinghamshire.

Why choose Totteridge House?

- **Comfortable, Connected, and Tailored Living:** Our home offers spacious rooms, shared social spaces, and calming environments designed around individual needs. Nearby amenities include High Wycombe town centre and nearby local woods. Transport options are available with services into Central London, Oxford and more.
- **Co-Produced, Person-Centred Support:** Shaped by people with lived experience through our Influencers Group, we build care plans around each person's strengths and goals - like supporting someone with a passion for art to lead classes, boosting confidence and inspiring others.

Expert, Caring Team: All our staff are trained in Positive Behaviour Support (PBS) and Proact-SCIPr-UK. Each person we support has a tailored PBS plan, with input from our in-house PBS Practitioners, Speech and Language Therapists, and Occupational Therapists, promoting safety, independence, and progress.



Totteridge House - [Google Maps](#)

Room information

Room 7

This first-floor vacant room includes

- **Fully-Furnished Bedroom:** Includes a double bed, dresser, wardrobe, and a table and chairs.
- **Private En-Suite Bathroom:** With a sink, toilet and a bathtub
- **Natural Light:** The space features two windows that provide ample natural light, offering a view of the back garden.



Explore A
Short Video Of
The Bedroom

[Click here](#)

Scan me



Features



Private bedroom



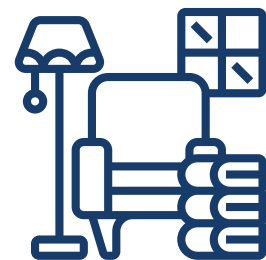
En-suite bathroom



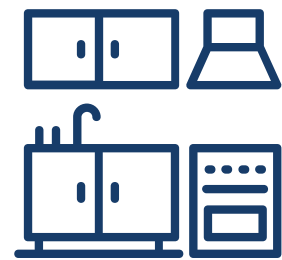
Residential home



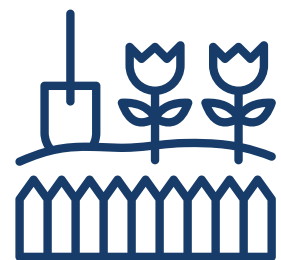
Off-street parking



Shared lounge



Shared kitchen



Shared garden



Sensory room



Suburban location

Benefits



Staff on-site 24/7



Positive Behaviour Support (PBS)



Person-centred care



Proact-SCIPr training



Outcomes-based support & Personal skill development



Near a Learning Disability Day Centre



Regional support network



Speech and language therapy



Registered manager on site

Meet the team



Suzanne, Regional General Manager for London and the South East Region

Suzanne offers over 28 years of social care experience, including leadership roles at Active Care Group. Dedicated to achieving exceptional outcomes for individuals, Suzanne leads by example, transforming care and fostering supportive environments for both those we support and her colleagues.



Helen, Operations Manager for the London Region

Since 2007, Helen has been committed to the social care sector, leading services to achieve positive outcomes. She focuses on building high-performing teams with a strong culture, believing these foundations are key to delivering exceptional care for those we support.



Angela, Registered Manager at Totteridge House

As Registered Manager at Totteridge, Angela brings 35 years of experience in care, spanning older adults, learning disabilities, and mental health. With a background at the Epilepsy Society and Autism Care UK, she has been with Liaise for nearly six years. Passionate about creating a homely environment, Angela works closely with her team to ensure the home is fully adapted to those they support.



The place looks beautiful and my loved one looks relaxed and happy

Family Member



I was very impressed with the change in a supported individual's demeanour yesterday and his general health looked so much better than the last visit a year ago. With all the work on his room, it really does look homely and very personal to his needs. You have worked hard to achieve this with him

Social Care Professional

Co-production

We're proud to have an established Influencers Group, made up of supported individuals from our homes. This group plays a pivotal role in shaping our plans, ensuring they are genuinely aligned with the needs and aspirations of all those living in a Liaise home.

By listening to people with lived experience, we bring an enriched, authentic perspective to everything we do. From policy and practice reviews to designing new homes, their voices directly influence our approach to key working, goal setting, and designing services.

Our commitment to co-production means creating meaningful partnerships that empower individuals, drives inclusion, and deliver homes truly tailored to those we support. Together with our Influencers, we're making Liaise the best possible place to live - a place where everyone's voice shapes the future.

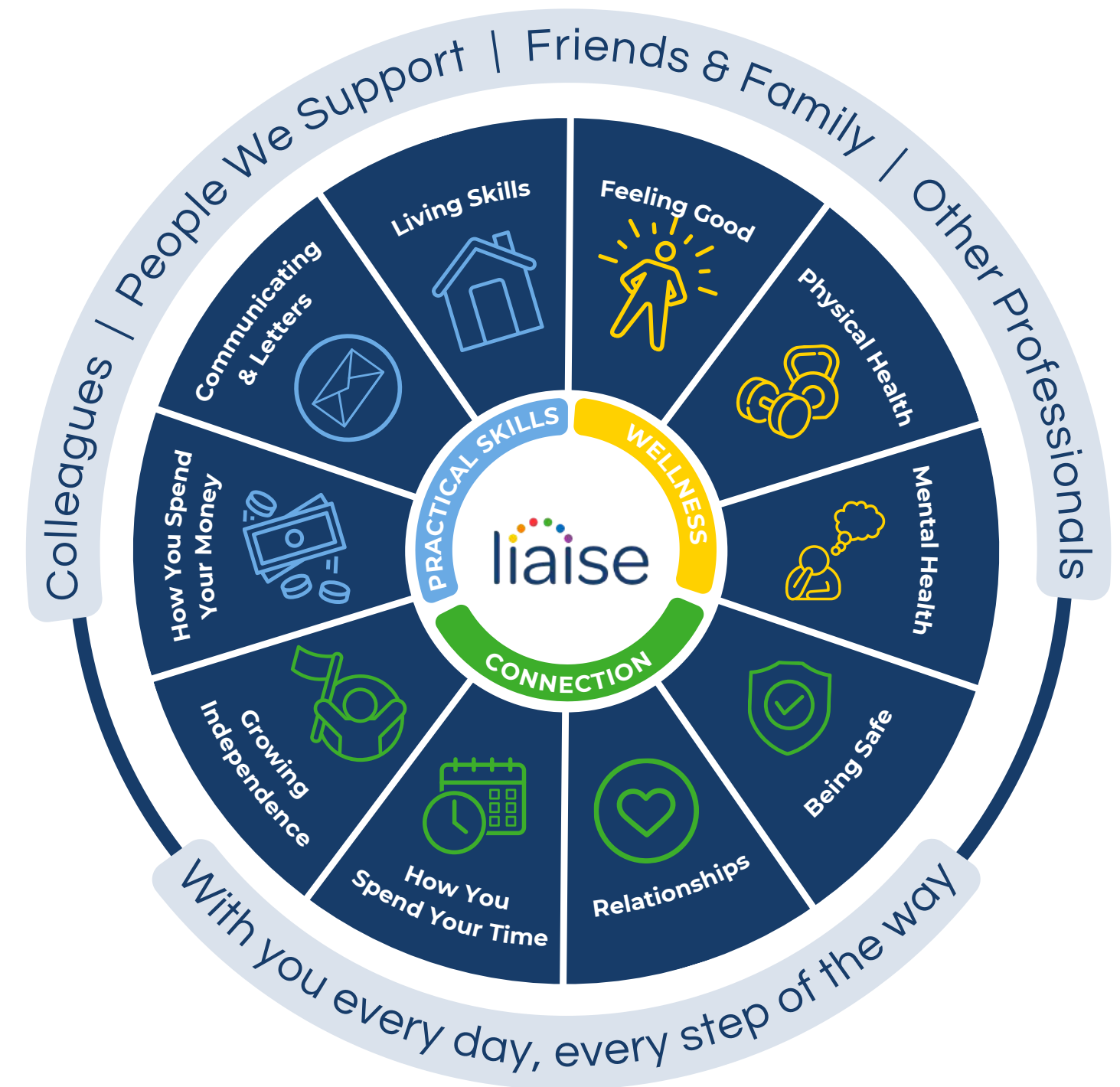


Improving Lives

Built on the principles of Positive Behaviour Support (PBS) and Proact-SCIPr-UK training, our approach prioritises respect for individual needs, promotes independence, and ensures safety and well-being.

We go beyond standard care by equipping all team members with specialist PBS training, guided by the expertise of PBS Practitioners, Speech and Language Therapists, and Occupational Therapists. This collaborative approach enables us to deliver high-quality, tailored support that drives meaningful outcomes for the people we support.

Our innovative Outcomes Pathway Model (right) helps us design bespoke care strategies based on each person's unique hopes, goals, and aspirations.



Working Together: Environment, Social and Governance

With Liaise as your partner, you can confidently meet ESG obligations while together we make a tangible difference in the lives of those we support.

- Environmental Responsibility
 - Energy-efficient homes, with heat pump technology and natural light tunnels.
 - Commitment to sustainable procurement and operations.
 - Promoting green practices across our homes and communities.
- Social Impact
 - Measurement of outcomes and goals, to demonstrate impact.
 - Active co-production group to ensure equity and representation.
 - Quality of life improved via high-quality care, skill development, and community engagement.
- Governance Leadership
 - Transparent ESG aligned reporting.
 - Rigorous safeguarding, compliance, and ethical practices.
 - Stakeholder engagement at all levels to ensure accountability and continuous improvement.

Outcomes That Matter

Our Outcomes Pathway empowers people to thrive by focusing on 10 key areas of wellbeing. It helps us set meaningful goals with the individuals we support and deliver personalised care that leads to real, lasting change.

Harry's Move To Totteridge House

When Harry's previous home closed, he faced an uncertain future. His complex needs (both health and physical-related) had not been fully supported, preventing him from living the active and fulfilling life he deserved. But moving to Totteridge changed everything.

Before his arrival, the team made important adaptations to ensure that Totteridge could truly be his home. A walk-in wet room replaced the en-suite, ramps and accessible routes were installed, and mobility aids were introduced to support him both in his room and throughout the home. Understanding that Harry had a health condition our team had never managed before, they took the time to receive specialist training, ensuring the team could provide him with the best possible care.

<https://liaise.com/harrys-move-to-totteridge-house/>





Theresa Cook

Referrals & Placement Manager



referrals@liaise.com



0330 500 5052



[LiaiseUK](#)



[Liaise_UK](#)



[LiaiseUK](#)