



# ● **Totteridge House**

---

A residential care home in  
High Wycombe, Buckinghamshire

HP13 7LW

liaise



# Experience you can trust, support you can rely on

We support people with a learning disability, autistic people, and people with complex needs and behaviours that challenge, in residential care and supported living homes across London, the South and East of England.

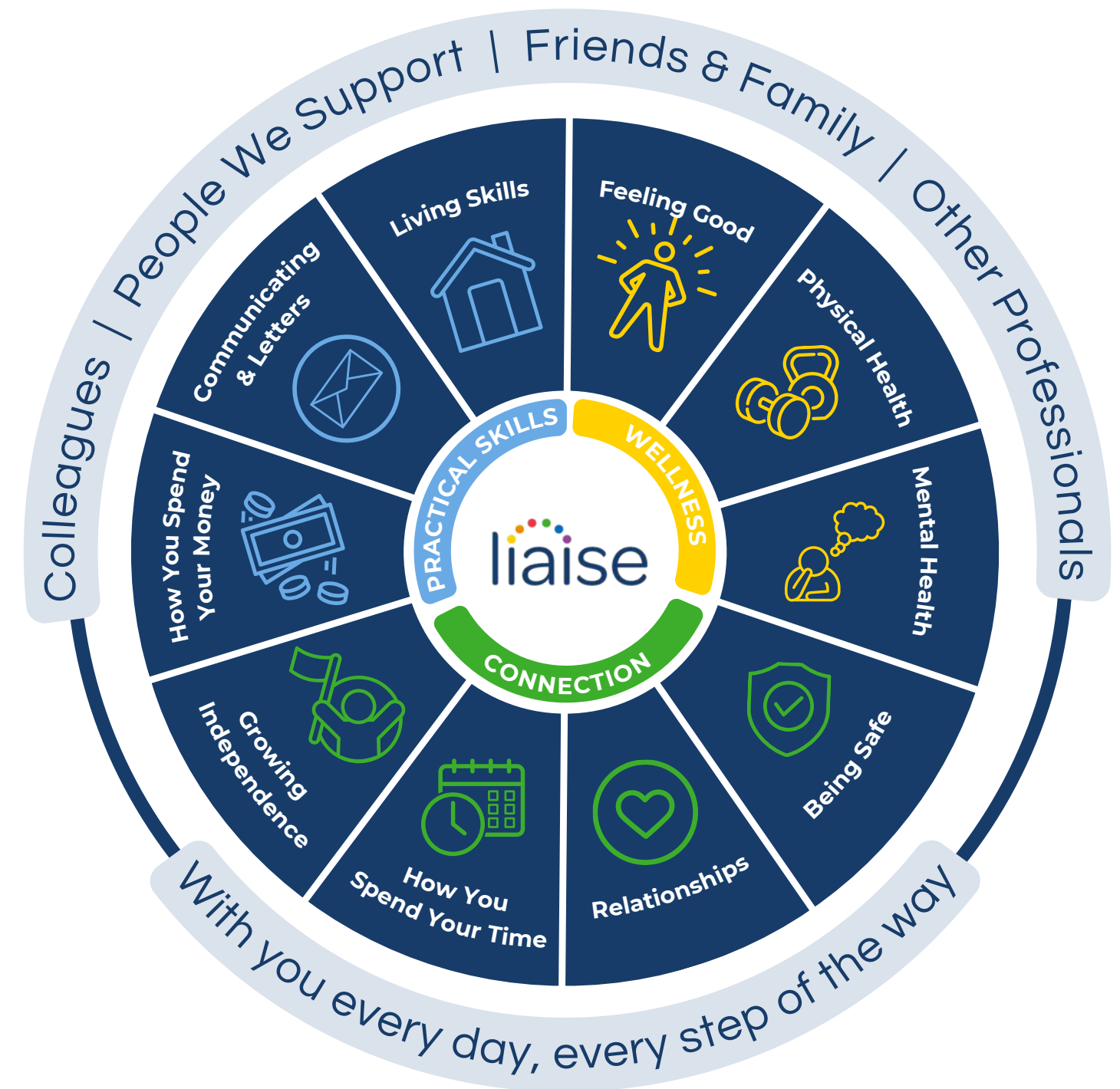


# Improving Lives

Built on the principles of Positive Behaviour Support (PBS) and Proact-SCIPr-UK training, our approach prioritises respect for individual needs, promotes independence, and ensures safety and well-being.

We go beyond standard care by equipping all team members with specialist PBS training, guided by the expertise of PBS Practitioners, Speech and Language Therapists, and Occupational Therapists. This collaborative approach enables us to deliver high-quality, tailored support that drives meaningful outcomes for the people we support.

Our innovative Outcomes Pathway Model (right) helps us design bespoke care strategies based on each person's unique hopes, goals, and aspirations.



# Co-production

We're proud to have an established Influencers Group, made up of supported individuals from our homes. This group plays a pivotal role in shaping our plans, ensuring they are genuinely aligned with the needs and aspirations of all those living in a Liaise home.

By listening to people with lived experience, we bring an enriched, authentic perspective to everything we do. From policy and practice reviews to designing new homes, their voices directly influence our approach to key working, goal setting, and designing services.

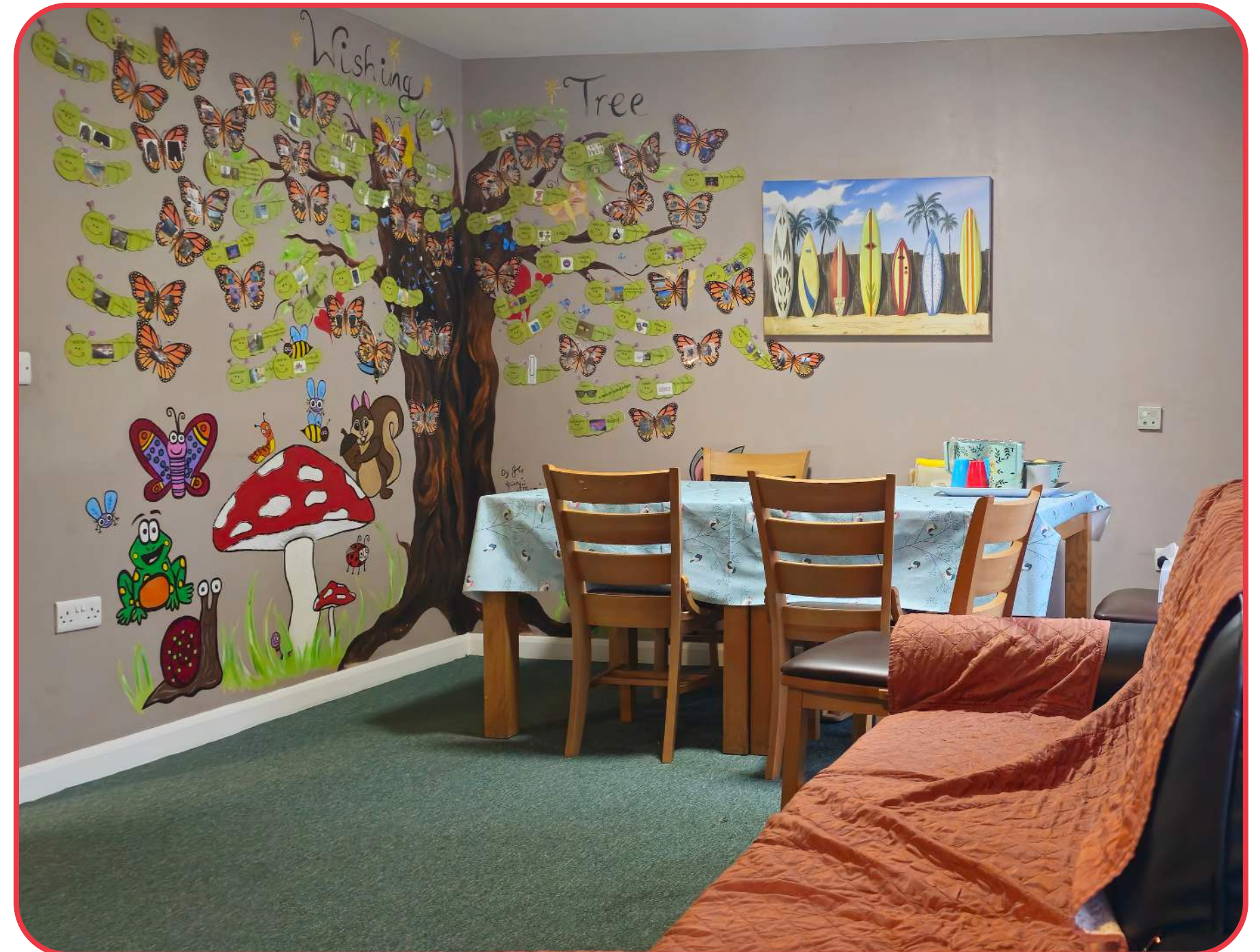
Our commitment to co-production means creating meaningful partnerships that empower individuals, drives inclusion, and deliver homes truly tailored to those we support. Together with our Influencers, we're making Liaise the best possible place to live - a place where everyone's voice shapes the future.



# Overview

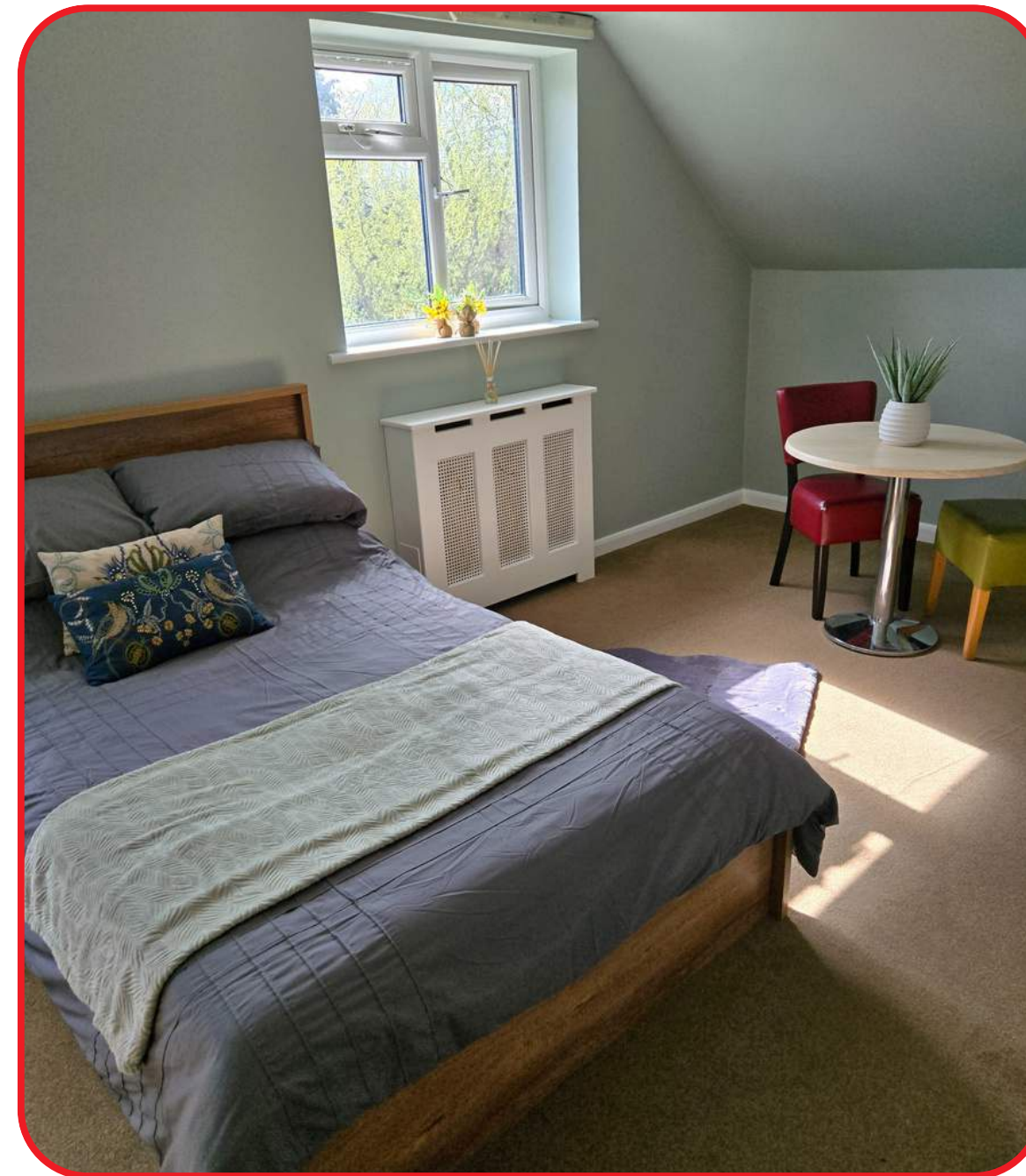
Totteridge House is a calm, serene residential home set in tranquil surroundings, offering peaceful communal spaces and dedicated care. Our experienced team provides individualised support designed to meet every person's unique needs. Nestled in High Wycombe, Totteridge offers a serene environment within reach of local shops and facilities. Ideal for people looking for a slower pace of life, Totteridge provides a peaceful retreat with excellent connections.

Totteridge House is more than just a residential home - it's a thriving community. If you're looking for a care setting that offers exceptional support, meaningful engagement, and a strong community spirit, we would love to discuss how Totteridge can make a difference for those you support.



# Totteridge House, Room 7

The vacancy at Totteridge House is located on the first floor. The large, fully-furnished room features a small lounge area as well as an attached en-suite bathroom.



# Meet the team



**Suzanne**, Regional General Manager for London and the South East Region

Suzanne offers 18 years of social care experience, including leadership roles at Active Care Group. Dedicated to achieving exceptional outcomes for individuals, Suzanne leads by example, transforming care and fostering supportive environments for both those we support and her colleagues.



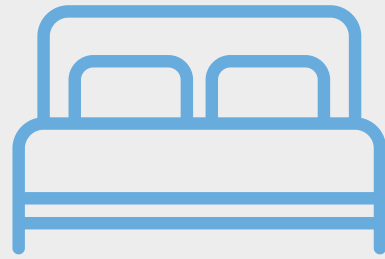
**Helen**, Operations Manager for the London Region

Since 2007, Helen has been committed to the social care sector, leading services to achieve positive outcomes. She focuses on building high-performing teams with a strong culture, believing these foundations are key to delivering exceptional care for those we support.



**Angela**, Totteridge House' Registered Home Manager

As Registered Manager at Totteridge, Angela brings 35 years of experience in care, spanning older adults, learning disabilities, and mental health. With a background at the Epilepsy Society and Autism Care UK, she has been with Liaise for nearly six years. Passionate about creating a homely environment, Angela works closely with her team to ensure the home is fully adapted to those they support.



Private bedroom



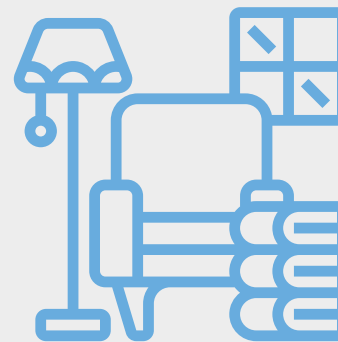
En-suite bathroom



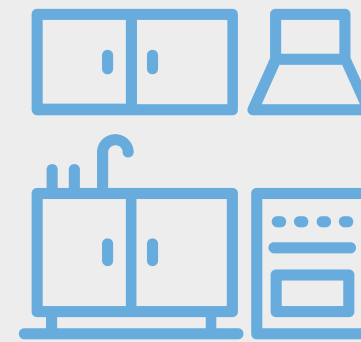
Residential home



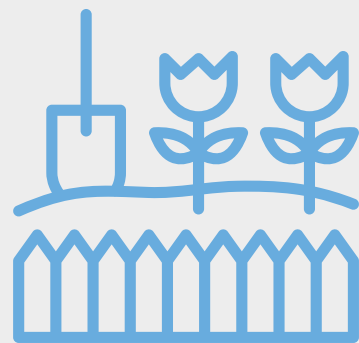
Sensory room



Shared lounge



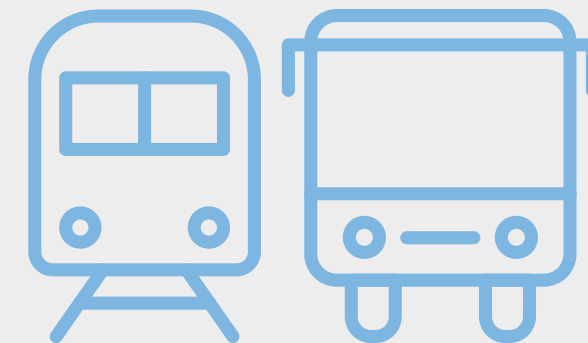
Shared kitchen



Large garden



Off-street parking



Public transport  
links



Staff on-site 24/7 &  
Registered home manager on-site



Positive Behaviour  
Support (PBS)



Person-centred care



Proact-SCIPr training



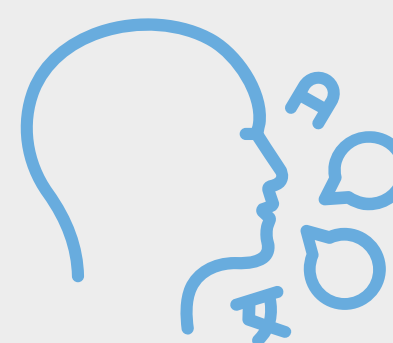
Outcomes-based support &  
Personal skill development



Near a SEND College  
and Day Centre



Regional support network



Speech and language  
therapy



Registered social  
landlord

# Working Together: Environment, Social and Governance

With Liaise as your partner, you can confidently meet ESG obligations while together we make a tangible difference in the lives of those we support.

- Environmental Responsibility
  - Energy-efficient homes, with heat pump technology and natural light tunnels.
  - Commitment to sustainable procurement and operations.
  - Promoting green practices across our homes and communities.
- Social Impact
  - Measurement of outcomes and goals, to demonstrate impact.
  - Active co-production group to ensure equity and representation.
  - Quality of life improved via high-quality care, skill development, and community engagement.
- Governance Leadership
  - Transparent ESG aligned reporting.
  - Rigorous safeguarding, compliance, and ethical practices.
  - Stakeholder engagement at all levels to ensure accountability and continuous improvement.

# Home Activity

## Harry's Move To Totteridge House

When Harry's previous home closed, he faced an uncertain future. His complex needs - both health-related and physical - had not been fully supported, preventing him from living the active and fulfilling life he deserved. But moving to Totteridge changed everything.

Before his arrival, the team made important adaptations to ensure that Totteridge could truly be his home. A walk-in wet room replaced the en-suite, ramps and accessible routes were installed, and mobility aids were introduced to support him both in his room and throughout the home. Understanding that Harry had a health condition our team had never managed before, they took the time to receive specialist training, ensuring the team could provide him with the best possible care.

<https://liaise.com/harrys-move-to-totteridge-house/>



# Compliments

“ The place looks beautiful and my loved one looks relaxed and happy

**Family Member**, January 2024

“ Thank you to you and the team from making me feel very welcome. You and the team run a lovely home and I can see the supported individuals are very well loved and looked after.

**Executive Team Member**, November 2023

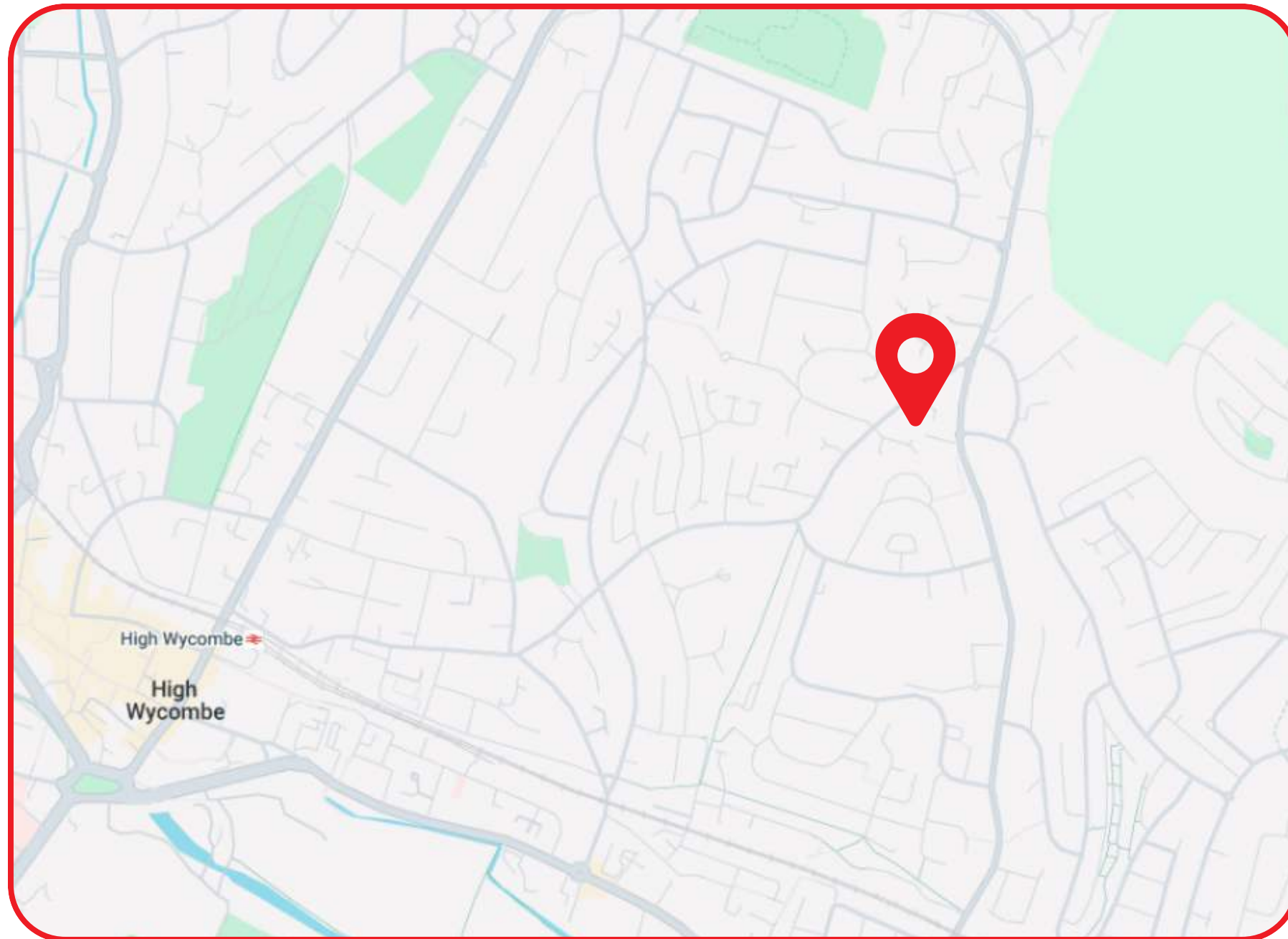
“ I was very impressed with the change in a supported individual's demeanour yesterday and his general health looked so much better than the last visit a year ago. With all the work on his room, it really does look homely and very personal to his needs. You have worked hard to achieve this with him

**Social Care Professional**, July 2023

“ Thank you for keeping us informed and providing all the information that was required to facilitate this. Please pass on our thanks to you and the staffing team in looking after a supported individual

**Social Care Professional**, November 2020

# Location



Hidden on a small path from the main road, Totteridge House is located within the Kingswood Park neighbourhood of the market town of High Wycombe. The house offers a nice blend of urban and a quiet environment suited for those looking for a community based area.

The home is conveniently close to the many woods and nature walks Buckinghamshire has to offer. The home is also close to the town centre, where there are several accessible shopping and entertaining venues. There is a train station in town serving London Marylebone and north to Birmingham.



## Theresa Cook

Referrals & Placement Manager



[referrals@liaise.com](mailto:referrals@liaise.com)



0330 500 5052



[LiaiseUK](#)



[Liaise\\_UK](#)



[LiaiseUK](#)