



# Timaru

---

A residential care home in  
Romsey, Hampshire

SO51 0LB







# Experience you can trust, support you can rely on

We support people with a learning disability, autistic people, and people with complex needs and behaviours that challenge, in residential care and supported living homes across London, the South and East of England.



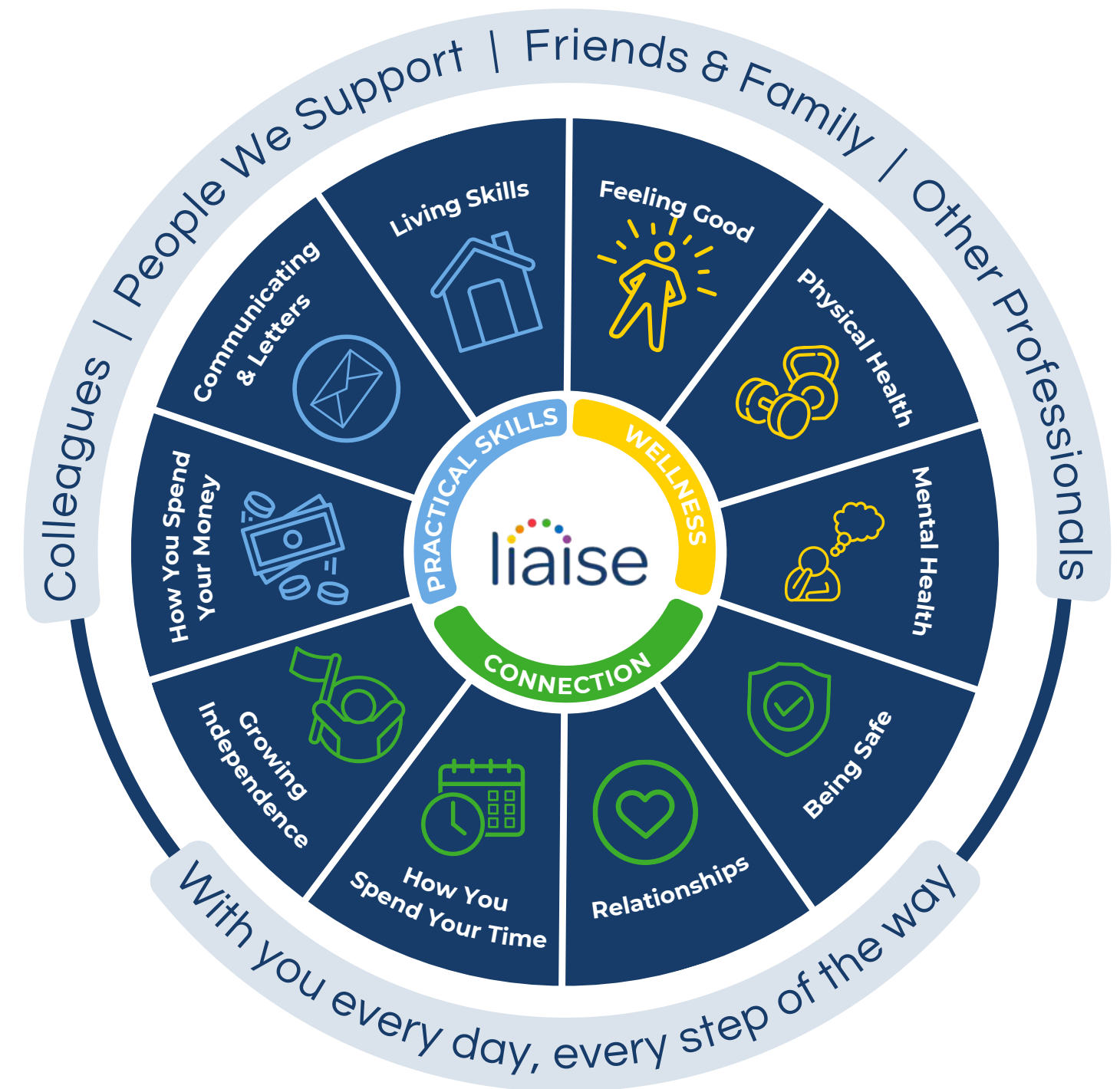


# Improving Lives

Built on the principles of Positive Behaviour Support (PBS) and Proact-SCIPr-UK training, our approach prioritises respect for individual needs, promotes independence, and ensures safety and well-being.

We go beyond standard care by equipping all team members with specialist PBS training, guided by the expertise of PBS Practitioners, Speech and Language Therapists, and Occupational Therapists. This collaborative approach enables us to deliver high-quality, tailored support that drives meaningful outcomes for the people we support.

Our innovative Outcomes Pathway Model (right) helps us design bespoke care strategies based on each person's unique hopes, goals, and aspirations.



# Co-production

We're proud to have an established Influencers Group, made up of supported individuals from our homes. This group plays a pivotal role in shaping our plans, ensuring they are genuinely aligned with the needs and aspirations of all those living in a Liaise home.

By listening to people with lived experience, we bring an enriched, authentic perspective to everything we do. From policy and practice reviews to designing new homes, their voices directly influence our approach to key working, goal setting, and designing services.

Our commitment to co-production means creating meaningful partnerships that empower individuals, drives inclusion, and deliver homes truly tailored to those we support. Together with our Influencers, we're making Liaise the best possible place to live - a place where everyone's voice shapes the future.





# Overview

Timaru is a peaceful, serene residential home located in the suburbs, offering compassionate, tailored care to each individual.

Our dedicated team fosters a calm environment where residents can feel at ease and supported. Located just north of Romsey, Timaru provides a quiet and serene environment, making it ideal for those seeking a peaceful life while still having easy access to the attractions of Romsey and the nearby city of Southampton.





# Meet the team



**Brad**, Regional General Manager for the South Region

With 25+ years in the learning disability sector, Brad has held senior roles across care homes, supported living, and brain injury services. Passionate about working in partnership, he focuses on delivering person-centred support that ensures safety and helps individuals live their best lives.



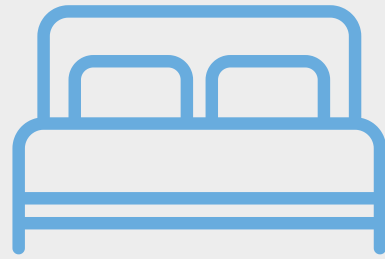
**Alexandra**, the South Region's Operations Manager

Alex's journey with Liaise began in 2013 as a deputy manager for Sansa House and over time has become a Registered Manager and an Area Manager. Her dedication and passion have propelled her to the role of Operations Manager, overseeing homes in Basingstoke and Hampshire. Her experience fuels her commitment to empowering people to thrive.



**David**, Timaru's Registered Home Manager

Dave has worked in Care since 2004. He has experience of supporting people in residential care, supported living, and community outreach. He has a broad spectrum of leadership roles in an Operational capacity. He has returned to hands on management of a service with an aim of using his experience to lift Timaru to Outstanding.



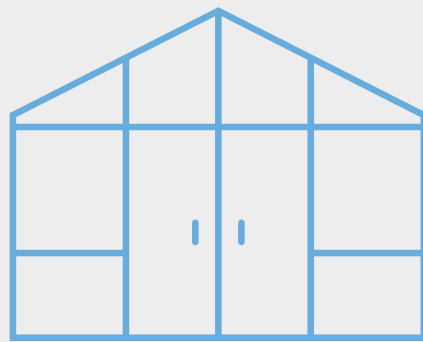
Private bedroom



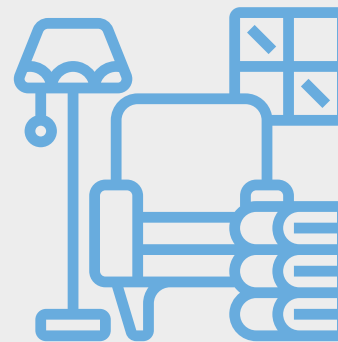
En-suite bathroom



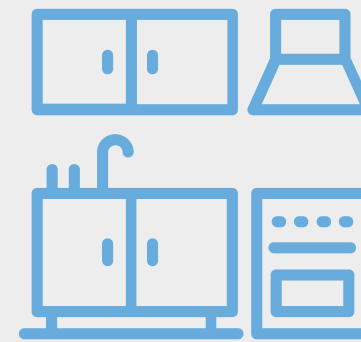
Residential home



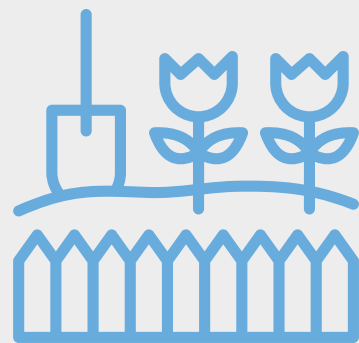
Conservatory



Shared lounge



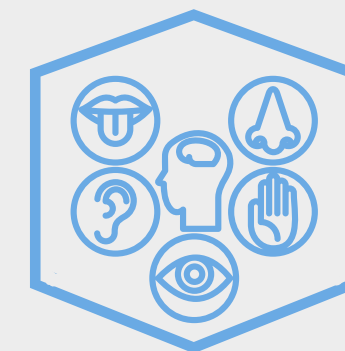
Shared kitchen



Garden access



Off-street parking  
available



Sensory Room





Staff on-site 24/7



Registered home manager on-site



Person-centred care



Rural environment



Outcomes-based support



Positive Behaviour Support (PBS)



Regional support network



Near local amenities



Personal skill development



# Working Together: Environment, Social and Governance

With Liaise as your partner, you can confidently meet ESG obligations while together we make a tangible difference in the lives of those we support.

- Environmental Responsibility
  - Energy-efficient homes, with heat pump technology and natural light tunnels.
  - Commitment to sustainable procurement and operations.
  - Promoting green practices across our homes and communities.
- Social Impact
  - Measurement of outcomes and goals, to demonstrate impact.
  - Active co-production group to ensure equity and representation.
  - Quality of life improved via high-quality care, skill development, and community engagement.
- Governance Leadership
  - Transparent ESG aligned reporting.
  - Rigorous safeguarding, compliance, and ethical practices.
  - Stakeholder engagement at all levels to ensure accountability and continuous improvement.



# Outcomes Based Success

## Regional Story



### **Small Steps, Big Achievements: Sophia's Transformation at Karibu Place**

When Sophia\* joined Karibu Place in 2018, she faced significant challenges and required a high level of support to keep her safe. She found social interactions difficult and often preferred to stay in her room.

Fast forward to today, and Sophia's life has taken a remarkable turn. She's stepping into new experiences, embracing more independence, and achieving things that once seemed out of reach.

\*Name and photo changed for privacy reasons

<https://liaise.com/sophia-karibu-place-small-steps-big-achievements/>



# Compliments

“ We can see the difference in the service under the current management from where it was two years ago.

**Family Member**, April 2025

“ Dave, Jas and Lily have got things at Timaru moving in the right direction and we're really pleased with all that has been done by the management

**Family Member**, April 2025

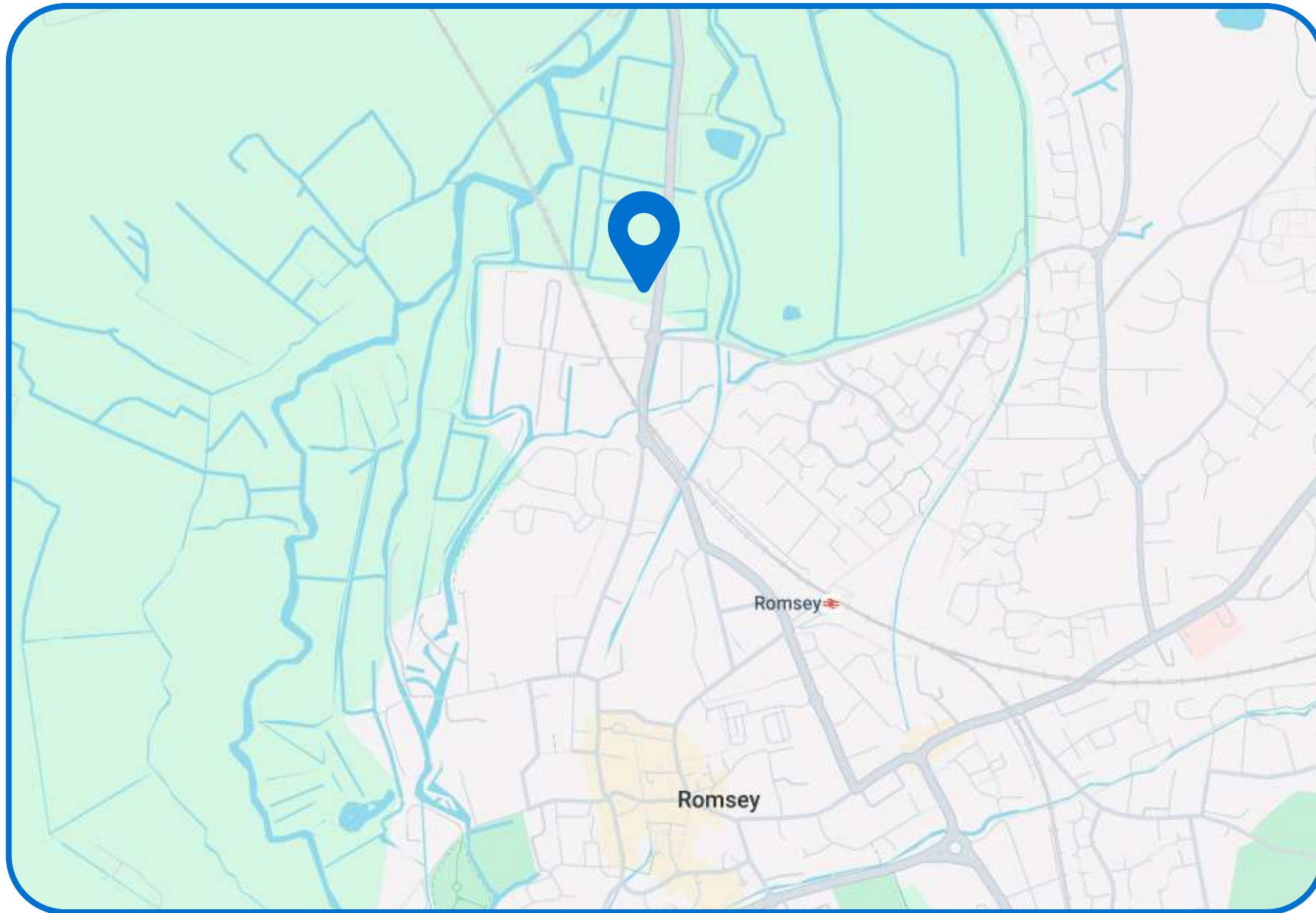
“ I am very pleased with how my loved one has developed. I feel like things at Timaru have always been improving.

**Family Member**, December 2023

“ Our loved one looked happy  
**Family Member**, July 2023



# Location



Timaru is located on the northern outskirts of Romsey. The home is a short distance away from the city of Southampton, where you'll find a wide range of amenities including shopping, entertainment and travel options both nationally and international.

Romsey is well connected, with rail links into Salisbury, Southampton, and the nearby city of Portsmouth. There are bus and coach services into Southampton's city centre.





## Chelsea Chard

Referral Partner



[referrals@liaise.com](mailto:referrals@liaise.com)



0330 500 5052



[LiaiseUK](#)



[Liaise\\_UK](#)



[LiaiseUK](#)