



Peterborough Road

Supported Living in
Farcet, Cambridgeshire



External Audit Report

Excellent 



Specialist Support From Day One

We provide bespoke support for adults with **learning disabilities** and **autistic people**, including those with **complex needs**, **behaviours of distress** and **experiencing mental health conditions**. Our approach is rooted in **Positive Behaviour Support (PBS)** and **PROACT-SCI Pr-UK**, ensuring support that is person-led and focused on promoting independence and wellbeing.

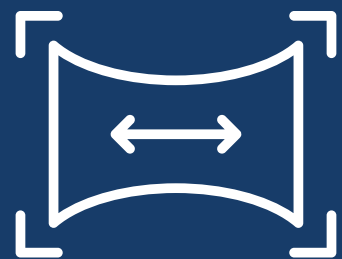
We have dedicated **in-house PBS Practitioners** and all team members receive **non-restrictive PBS and PROACT-SCI Pr-UK training**. This collaborative model enables us to deliver support that leads to meaningful progress, always driven by what matters most to the people we support.



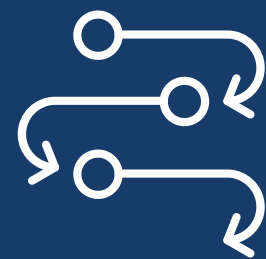
In-house PBS Practitioner with a nursing background for complex behaviours



All staff trained in PROACT-SCI Pr-UK



Co-produced flexible supported-living models with opportunities to open new services



Step-down discharge pathways to supported living



Smooth transitions into adult support with support tailored for young adults



Independent Living, Shared Community

We'll work closely with you to tailor the environment to the specific needs of the person moving in.



Self Contained
Bungalow



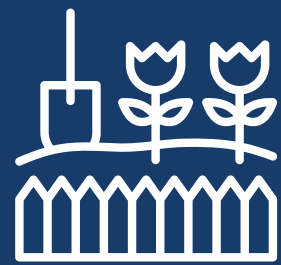
Wider Regional Peer
Network



Off-Street
Parking



Nearby Learning
Disability Day Centre



Rear Garden



Suburban Location



Four
Single-Dwelling
Bungalows



Independent
Registered Social
Landlord



Meet the Team



Lisa, Regional General Manager for the Midlands

Joining Liaise in November 2024, Lisa brings 30+ years' experience in Learning Disabilities and Autism, including senior leadership roles across the sector.



Ethan, Operations Manager for the Midlands

Ethan has built his career in the supported living sector, working alongside people with learning disabilities for many years, where he's committed to delivering high-quality, person-led support.



Angelica, Peterborough Road's Interim Home Manager

Angelica has over 30 years of experience working across health and social care services, supporting people with learning disabilities and other complex needs. She is passionate about delivering high-quality, person-led support and driving people to achieve positive outcomes.



Committed to Co-Production

We have an established Influencers Group, made up of people we support, who play a pivotal role in shaping our services. Their insight ensures that everything we do reflects the needs, preferences, and aspirations of those with lived experience.

By actively listening to and involving this group, we embed authentic perspectives into every aspect of our work. From reviewing policies and practices to shaping key working approaches and designing new living opportunities, their voices directly influence how we develop and improve our support.

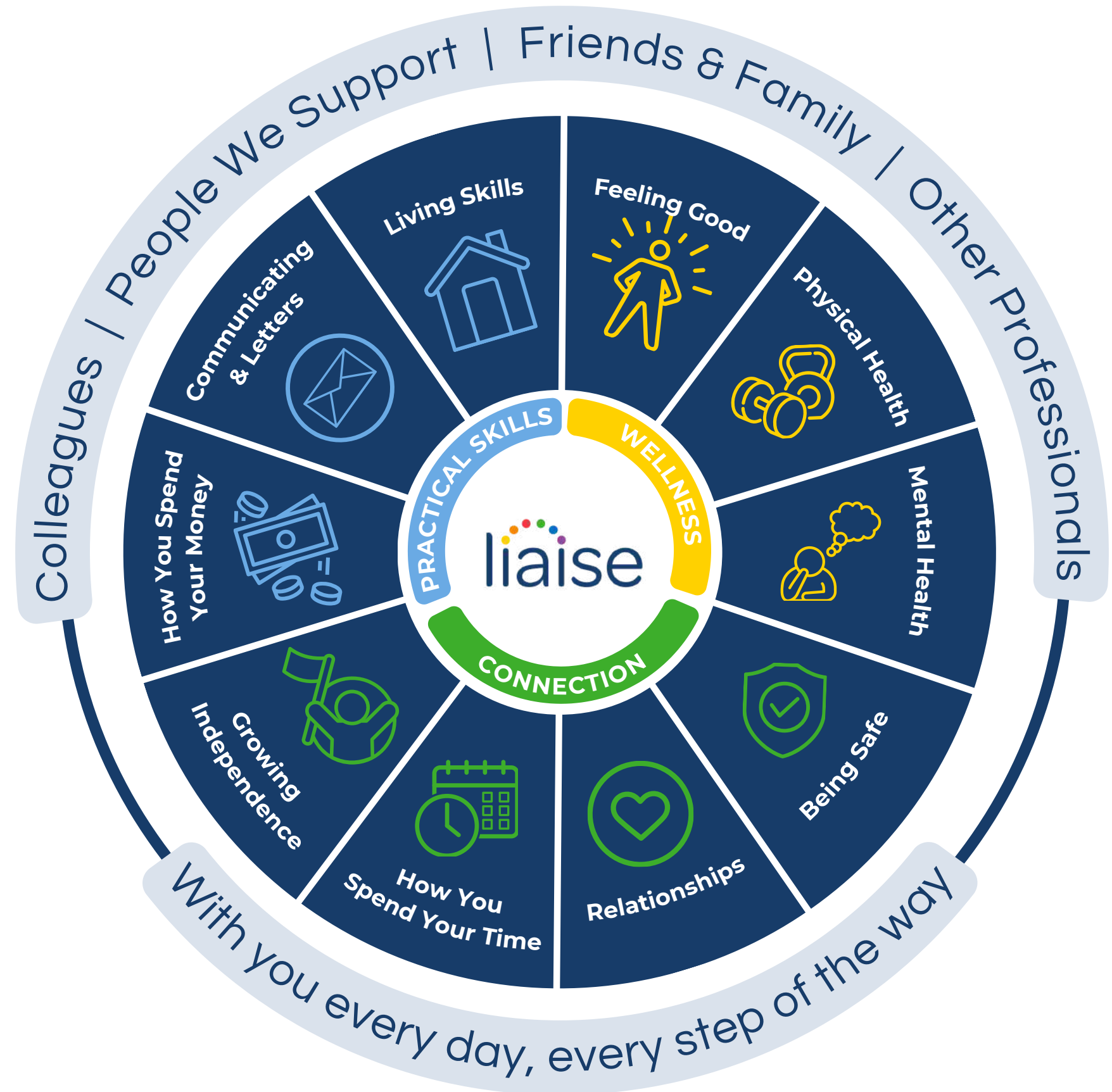


Every Day, We Help People Thrive

Our Outcomes Pathway Model ensures support is designed with and for each person, creating tailored strategies shaped around their hopes, goals, and aspirations.

This multidisciplinary approach enables us to deliver high-quality, personalised support so people can achieve what matters most to them.

Click here to read our latest stories



Progress that Matters, Led by the People We Support

Sunny has been focusing on how he wants to spend his time and building the confidence to develop meaningful relationships with those in his community.

He recently led the planning for an evening out and chose exactly how he wanted to spend his time. He co-produced a risk assessment with staff, identifying what activities felt safe and meaningful for him. He decided to walk to a local pub, enjoy a drink, and play pool - showing increasing independence and comfort in his community.

He then chose to go to the cinema. With supportive planning from staff, Sunny enjoyed the trip and talked openly about how having evening activities gives him something to look forward to.



To make a referral, call or email

📞 0330 500 5052

✉️ referrals@liaise.com



Inquiry Received

We will respond within **24 hours** of referral



Assessment

We will arrange an assessment to fully understand the needs of the individual within **5 working days**



Sending An Offer

Following the assessment, we will make an offer within **10 working days**



Invited To View Homes

We encourage you to visit our existing homes or new homes



Transition

We will begin co-produced transition planning once a placement offer has been accepted



Move In

To support a successful transition, we'll offer home visits and stays and we'll review the placement at frequent intervals within the **first three months**

Contact Us



Rebecca Read

Referrals and Transitions Manager



referrals@liaise.com



0330 500 5052



<https://liaise.com/referral/>



<https://liaise.com/home/peterborough-road/>



LiaiseUK



Liaise_UK



LiaiseUK