



St. James Mews

A residential care home in
Dartford, Kent

DA1 2ED





St James Mews

**2-3 St James
Place**



Experience you can trust, support you can rely on

We support adults with learning disabilities and autistic people, including those with complex needs and challenging behaviour, in residential care and supported living homes across London, the South and East of England

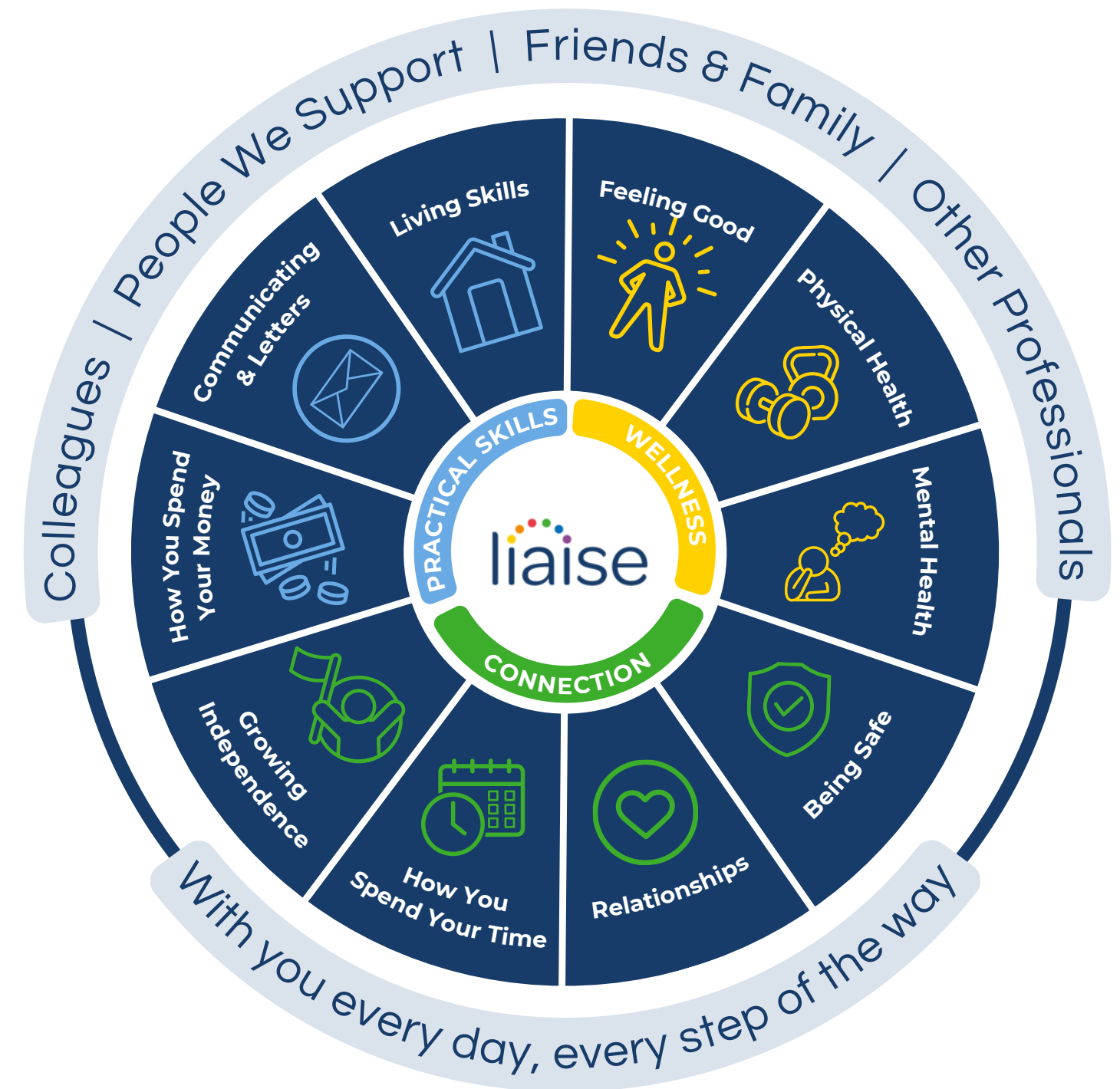


Improving Lives

Built on the principles of Positive Behaviour Support (PBS) and Proact-SCIPr-UK training, our approach prioritises respect for individual needs, promotes independence, and ensures safety and well-being.

We go beyond standard care by equipping all team members with specialist PBS training, guided by the expertise of PBS Practitioners, Speech and Language Therapists, and Occupational Therapists. This collaborative approach enables us to deliver high-quality, tailored support that drives meaningful outcomes for the people we support.

Our innovative Outcomes Pathway Model (right) helps us design bespoke care strategies based on each person's unique hopes, goals, and aspirations.



Co-production

We're proud to have an established Influencers Group, made up of supported individuals from our homes. This group plays a pivotal role in shaping our plans, ensuring they are genuinely aligned with the needs and aspirations of all those living in a Liaise home.

By listening to people with lived experience, we bring an enriched, authentic perspective to everything we do. From policy and practice reviews to designing new homes, their voices directly influence our approach to key working, goal setting, and designing services.

Our commitment to co-production means creating meaningful partnerships that empower individuals, drives inclusion, and deliver homes truly tailored to those we support. Together with our Influencers, we're making Liaise the best possible place to live - a place where everyone's voice shapes the future.



Overview

St James Mews offers a peaceful and characterful residential home where compassionate care meets tranquil communal spaces. Located just a stone's throw away from Dartford town centre, it provides easy access to a wealth of local amenities and excellent links to central London.

This home is ideal for individuals who appreciate a serene setting without being far from the hustle and bustle of city life. Our dedicated team ensures a calm, supportive environment, allowing each individual to feel valued and cared for while maintaining a sense of independence.

We can adapt and bespoke the room to fit the specific needs of individuals, such as paint colours or robust furniture, to make it the perfect home.



St. James Mews, Room 4

The available room at St. James Mews is a spacious first-floor retreat, offering comfort and privacy. Room 4 features a private en-suite bathroom with a walk-in shower and toilet. Fully furnished, the room includes a bed, wardrobe, drawers, and a cosy two-seat sofa.



Meet the team



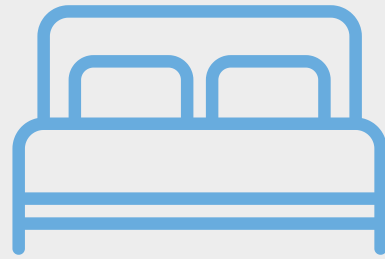
Suzanne, Regional General Manager for London and the South East Region

Suzanne offers 18 years of social care experience, including leadership roles at Active Care Group. Dedicated to achieving exceptional outcomes for individuals, Suzanne leads by example, transforming care and fostering supportive environments for both those we support and her colleagues.



Nicole, St. James Mew's Registered Home Manager

Nicole brings 36 years of experience in nursing and social care, including leadership roles across the NHS and private sectors. Passionate about high-quality, person-centred care, she leads by example, creating supportive environments for both residents and staff at St James Mews.



Private bedroom



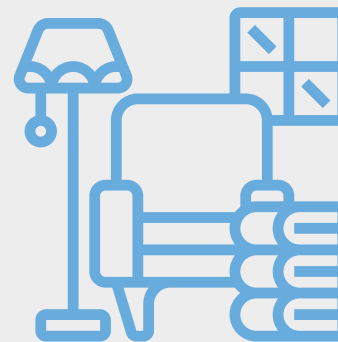
En-suite bathroom



Residential home



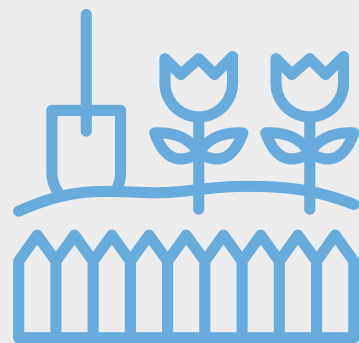
Off-street parking available



Shared lounge



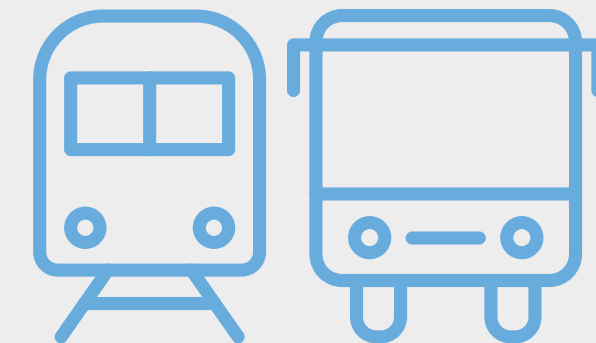
Shared kitchen



Shared garden



Wheelchair accessible
ground-floor



Public transport links



Staff on-site 24/7 &
Registered home manager on-site



Positive Behaviour
Support (PBS)



Person-centred care



Proact-SCIPr training



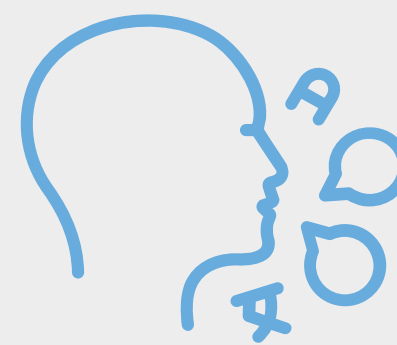
Outcomes-based support &
Personal skill development



Near a SEND College
and Day Centre



Regional support network



Speech and language
therapy



Registered social
landlord

Working Together: Environment, Social and Governance

With Liaise as your partner, you can confidently meet ESG obligations while together we make a tangible difference in the lives of those we support.

- Environmental Responsibility
 - Energy-efficient homes, with heat pump technology and natural light tunnels.
 - Commitment to sustainable procurement and operations.
 - Promoting green practices across our homes and communities.
- Social Impact
 - Measurement of outcomes and goals, to demonstrate impact.
 - Active co-production group to ensure equity and representation.
 - Quality of life improved via high-quality care, skill development, and community engagement.
- Governance Leadership
 - Transparent ESG aligned reporting.
 - Rigorous safeguarding, compliance, and ethical practices.
 - Stakeholder engagement at all levels to ensure accountability and continuous improvement.

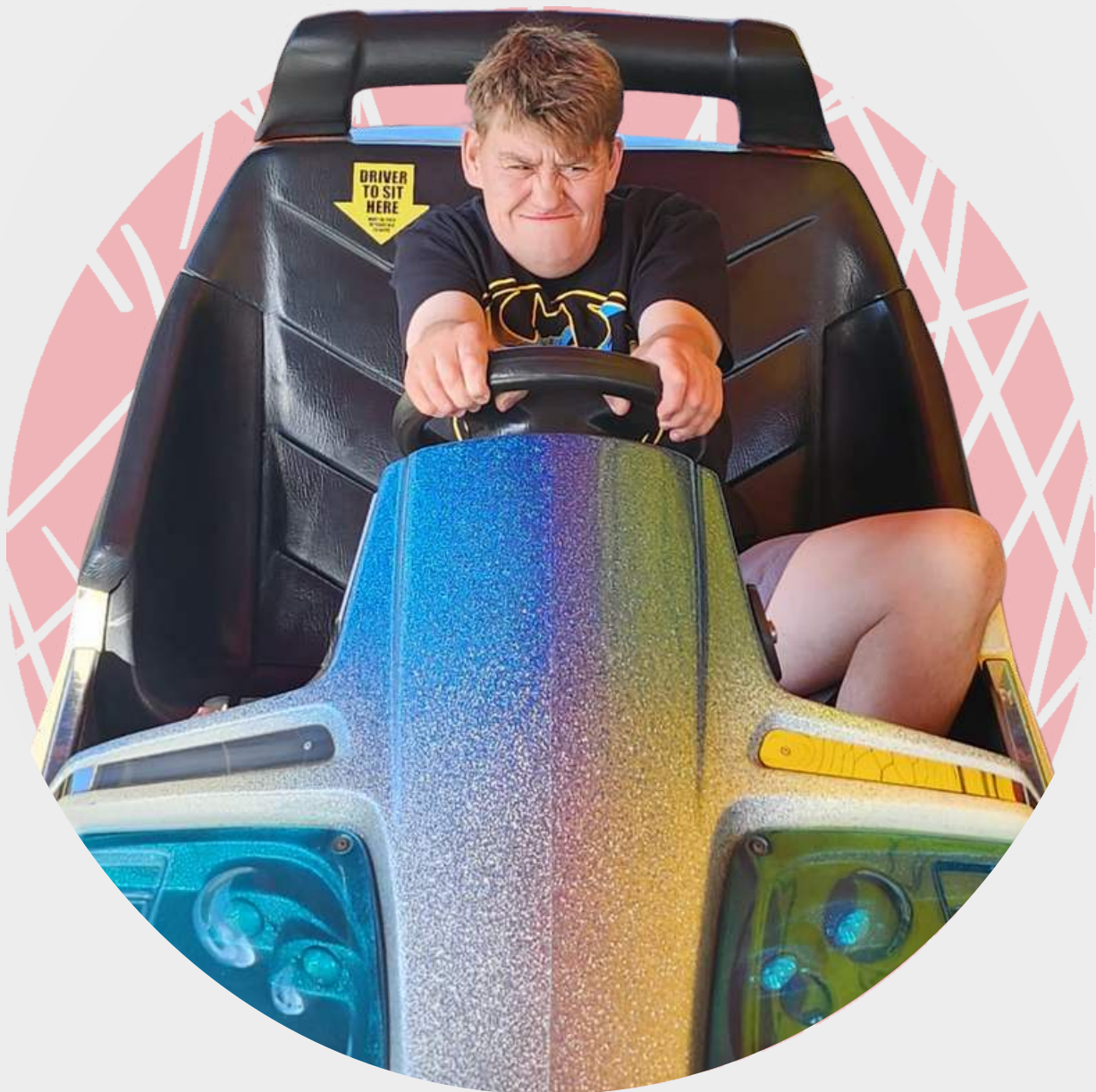
Outcomes Based Success

Lisa's Inspiring Progress at St. James Mews

Lisa, a person we support from St. James Mews, has made outstanding progress since moving into the home in 2016.

Before the move, she frequently faced behavioural challenges and found it difficult to engage in activities. Thanks to the unwavering support of the team, Lisa has transformed into a new person and is now celebrated for her friendliness and kindness.

<https://liaise.com/lisas-inspiring-progress-at-st-james-mews/>



Compliments

“ Holistic approach to care by manager
Healthcare Professional, February 2024

“ I was happy to see my loved one so engaged in the sensory activity you had at the home recently. She looked so happy.
Family Member, November 2023

“ Our loved one is well taken care of at St. James Mews and I am quite impressed with the level support by staff and the entire team. I can't thank you enough.
Family Member, November 2023

“ I'm so happy with the quality of care given to our loved one, they looked so happy.
Family Member, July 2023

Location



St. James House is conveniently located just a stone's throw from Dartford town centre. The home is close to the Orchards Shopping Centre, offering multiple stores and entertainment venues. It's also a short drive from both Bluewater and Lakeside shopping centres, providing even more options to explore.

The area benefits from excellent transport links, including bus services and rail access to King's Cross, London Bridge, Maidstone, and Tonbridge.



Theresa Cook

Referrals & Placement Manager



referrals@liaise.com



0330 500 5052



[LiaiseUK](#)



[Liaise_UK](#)



[LiaiseUK](#)