



Somerford Court

A supported living home in
Tottenham, London

N17 0ND





Experience you can trust, support you can rely on

We support adults with learning disabilities and autistic people, including those with complex needs and challenging behaviour, in residential care and supported living homes across London, the South and East of England

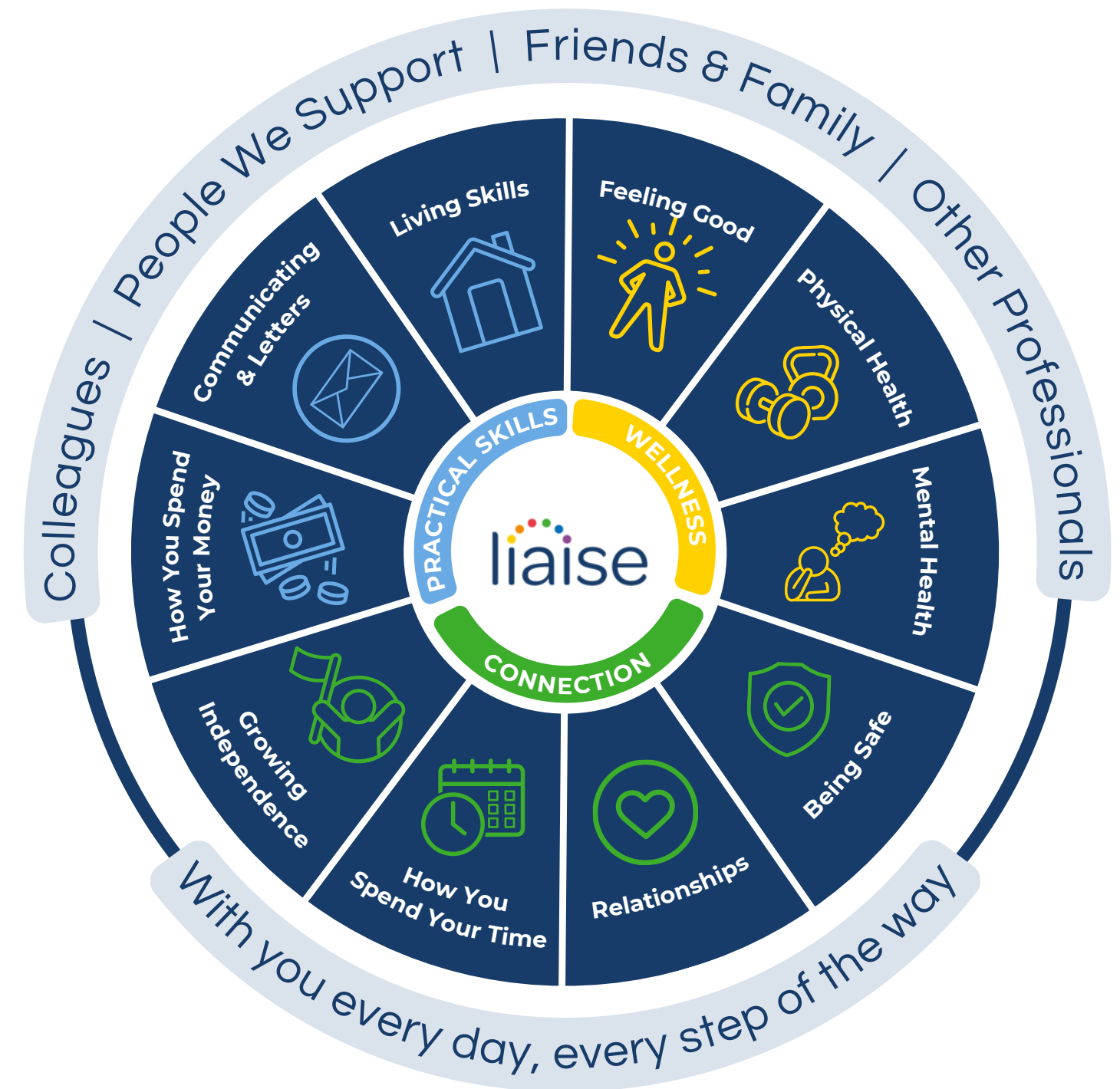


Improving Lives

Built on the principles of Positive Behaviour Support (PBS) and Proact-SCIPr-UK training, our approach prioritises respect for individual needs, promotes independence, and ensures safety and well-being.

We go beyond standard care by equipping all team members with specialist PBS training, guided by the expertise of PBS Practitioners, Speech and Language Therapists, and Occupational Therapists. This collaborative approach enables us to deliver high-quality, tailored support that drives meaningful outcomes for the people we support.

Our innovative Outcomes Pathway Model (right) helps us design bespoke care strategies based on each person's unique hopes, goals, and aspirations.



Co-production

We're proud to have an established Influencers Group, made up of supported individuals from our homes. This group plays a pivotal role in shaping our plans, ensuring they are genuinely aligned with the needs and aspirations of all those living in a Liaise home.

By listening to people with lived experience, we bring an enriched, authentic perspective to everything we do. From policy and practice reviews to designing new homes, their voices directly influence our approach to key working, goal setting, and designing services.

Our commitment to co-production means creating meaningful partnerships that empower individuals, drives inclusion, and deliver homes truly tailored to those we support. Together with our Influencers, we're making Liaise the best possible place to live - a place where everyone's voice shapes the future.



Overview

Somerford Court is a calming, supported-living home with a lot of diverse characters.

Located in Tottenham, North London, it's ideally positioned close to a wide range of local amenities and the dynamic energy of city living. Our friendly team fosters an atmosphere where connections thrive, creating a welcoming environment for all supported individuals.

Whether seeking a place to grow or a path towards greater progression, Somerford Court offers a perfect balance of support and opportunity.



Somerford Court, Room 4

The vacant Room 4 at Somerford Court is located on the ground-floor overlooking the entrance to the neighbouring Somerford Place garden. It's a large room with a private en-suite bathroom attached with bathtub and shower, sink and toilet. The room is fully furnished with a bed, chest of draws, open wardrobe and a desk table.



Meet the team



Suzanne, Regional General Manager for London and the South East Region

Suzanne offers 18 years of social care experience, including leadership roles at Active Care Group. Dedicated to achieving exceptional outcomes for individuals, Suzanne leads by example, transforming care and fostering supportive environments for both those we support and her colleagues.



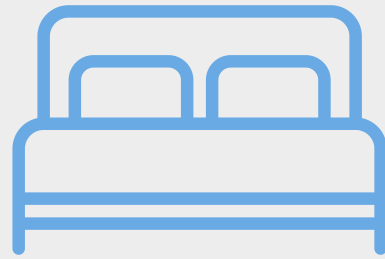
Helen, Operations Manager for the London Region

Since 2007, Helen has been committed to the social care sector, leading services to achieve positive outcomes. She focuses on building high-performing teams with a strong culture, believing these foundations are key to delivering exceptional care for those we support.



Pascale, Somerford Court's Registered Home Manager

Pascale recently joined Somerford Court as an experienced care professional with 26 years in the sector, specialising in supporting individuals with learning disabilities, autism, and elderly care. Her career began as a support worker before progressing into leadership roles, including six years as a domiciliary and bank deputy manager.



Private bedroom



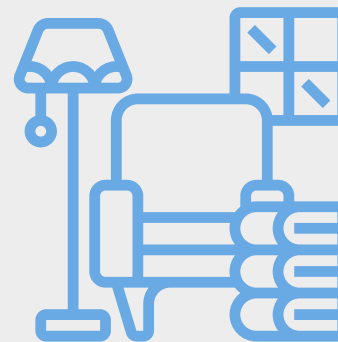
En-suite bathroom



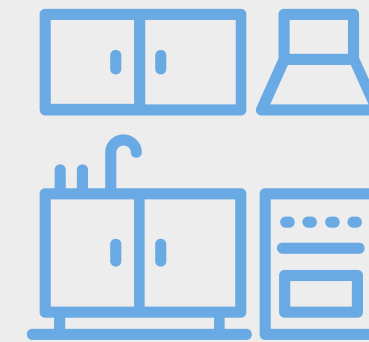
Supported living home



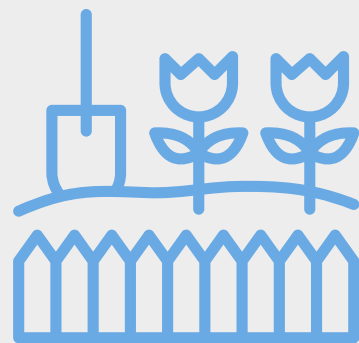
Wheelchair accessible



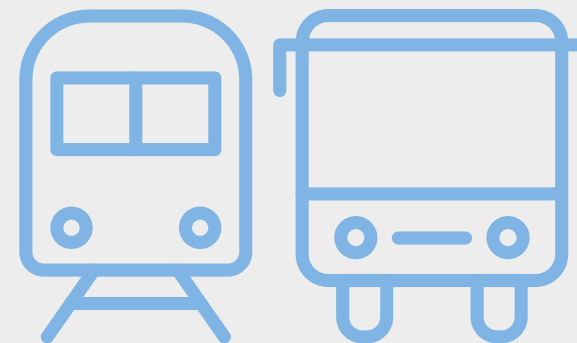
Shared lounge



Shared kitchen



Large garden



Public transport links



In the city



Staff on-site 24/7 &
Registered home manager on-site



Positive Behaviour
Support (PBS)



Person-centred care



Proact-SCIPr training



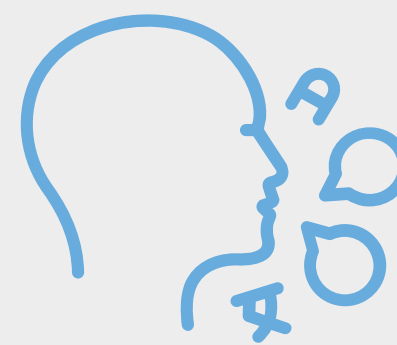
Outcomes-based support &
Personal skill development



Near a SEND College
and Day Centre



Regional support network



Speech and language
therapy



Registered social
landlord

Working Together: Environment, Social and Governance

With Liaise as your partner, you can confidently meet ESG obligations while together we make a tangible difference in the lives of those we support.

- Environmental Responsibility
 - Energy-efficient homes, with heat pump technology and natural light tunnels.
 - Commitment to sustainable procurement and operations.
 - Promoting green practices across our homes and communities.
- Social Impact
 - Measurement of outcomes and goals, to demonstrate impact.
 - Active co-production group to ensure equity and representation.
 - Quality of life improved via high-quality care, skill development, and community engagement.
- Governance Leadership
 - Transparent ESG aligned reporting.
 - Rigorous safeguarding, compliance, and ethical practices.
 - Stakeholder engagement at all levels to ensure accountability and continuous improvement.

Outcomes Based Success



Jean's Journey: From Bed-Bound to Dancing

Jean is a person we support from Somerford Court. She recently had a difficult period which has affected her mobility. After enduring weeks of patience, she made great strides in her recovery and progress in regaining her independence.

<https://liaise.com/jeans-journey-from-bed-bound-to-dancing/>

Outcomes Based Success



Nicole's Journey of Embracing New Connections

Nicole lives at Somerford Court and recently was experiencing increased difficulties. As such, the team held a meeting to discuss ways to help Nicole thrive. A local day centre was identified, where she threw herself into a range of activities and started to form a special friendship. These experiences have grown her self-confidence, social skills and improved her overall quality of life.

<https://liaise.com/nicoles-journey-embracing-new-connections/>

Compliments

“ You are just super-efficient honestly. Thank you so much

Family Member, October 2024

“ I just wanted to say how impressed I am with this – Bola was incredibly open and responsive on the phone, not one hint of defensiveness and so pleased to see she took action quickly and shared with you and HR

Team Member, November 2023

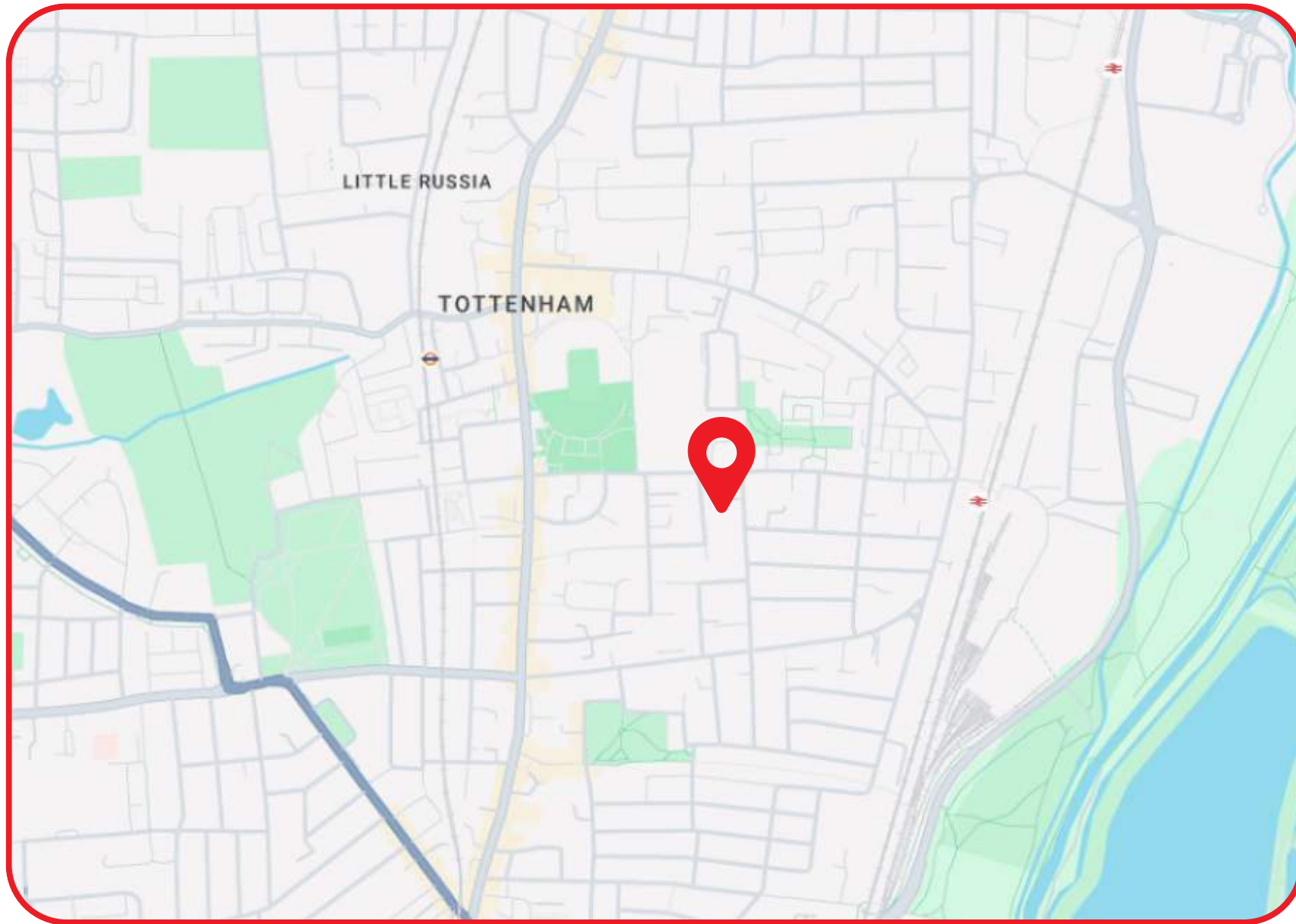
“ I’m happy to see the supported individual mobile and looking better than the last time I saw them.

Healthcare Professional, September 2024

“ Wow! I am her brother and I have never been allowed to give her a hug. That is so good, shows you that she's not entirely a lost cause. The staff at the Lighthouse were not ever on such good terms with her, and she was just one of the residents to them. It must make a huge difference to her mentally to feel wanted. They did say to me after your visit to see her there that she liked you a lot

Family Member, June 2023

Location



Somerford Court is located in the heart of the Tottenham area of the London Borough of Haringey, North London. The area is highly linked to neighbouring areas through a number of bus routes, railway stations and tube stations.

Near the areas hub, individuals at Somerford Place has good access to a number of stores, entertainment venues and parks for various outdoor activities.



Theresa Cook

Referrals & Placement Manager



referrals@liaise.com



0330 500 5052



[LiaiseUK](#)



[Liaise_UK](#)



[LiaiseUK](#)