



Meridian

A supported-living home in
Woolwich, London

SE18 7JN



Experience you can trust, support you can rely on

We support adults with learning disabilities and autistic people, including those with complex needs and challenging behaviour, in residential care and supported living homes across London, the South and East of England

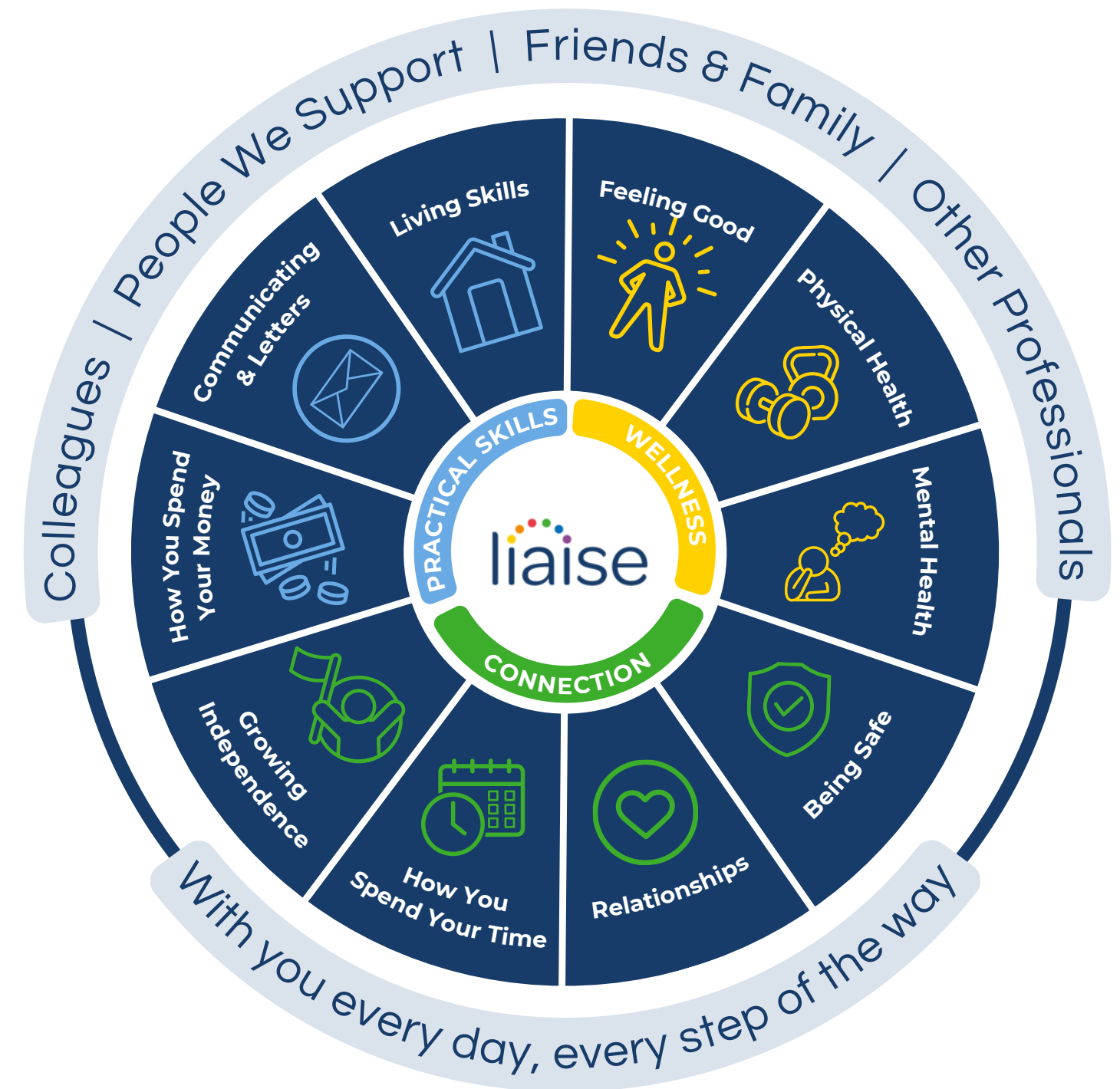


Improving Lives

Built on the principles of Positive Behaviour Support (PBS) and Proact-SCIPr-UK training, our approach prioritises respect for individual needs, promotes independence, and ensures safety and well-being.

We go beyond standard care by equipping all team members with specialist PBS training, guided by the expertise of PBS Practitioners, Speech and Language Therapists, and Occupational Therapists. This collaborative approach enables us to deliver high-quality, tailored support that drives meaningful outcomes for the people we support.

Our innovative Outcomes Pathway Model (right) helps us design bespoke care strategies based on each person's unique hopes, goals, and aspirations.



Co-production

We're proud to have an established Influencers Group, made up of supported individuals from our homes. This group plays a pivotal role in shaping our plans, ensuring they are genuinely aligned with the needs and aspirations of all those living in a Liaise home.

By listening to people with lived experience, we bring an enriched, authentic perspective to everything we do. From policy and practice reviews to designing new homes, their voices directly influence our approach to key working, goal setting, and designing services.

Our commitment to co-production means creating meaningful partnerships that empower individuals, drives inclusion, and deliver homes truly tailored to those we support. Together with our Influencers, we're making Liaise the best possible place to live - a place where everyone's voice shapes the future.



Overview

The Meridian home complex is made of Meridian Court, Meridian Mews, and Meridian Place. It's a nurturing home complex designed for young adults with learning disabilities, autism, and complex needs as they transition into adulthood. Offering tailored support, including Positive Behaviour Support (PBS) and access to speech and language therapy, Meridian helps individuals smoothly navigate life after school, college, or hospital settings.

The dedicated team at Meridian create an engaging environment where all the people we support are encouraged to participate in a range of activities, both at home and in the community. These opportunities are thoughtfully designed to promote personal growth, build independence, and support each individual in achieving their full potential.



Meridian Court, Room 6

This vacant room is situated on the first floor of Meridian Court. While the room is unfurnished, it includes a wall-mounted TV positioned near the window. It features a small kitchen area equipped with a sink and two personal-use cupboards. Additionally, a compact wardrobe is provided near the en-suite bathroom, offering space to hang clothing. The en-suite bathroom is fitted with a toilet, sink, and bathtub.



Meridian Mews, Flat 1

The vacant room is located on the first floor within Flat 1 of Meridian Mews. The self-contained flat includes a lounge area and kitchen on the ground floor. A staircase leads up to the vacant room, offering easy access.

The room is partially furnished, featuring a bed frame base, a built-in wardrobe, and an additional standalone wardrobe for ample storage. The en-suite bathroom is compact and includes a toilet, sink, and bathtub.



Meridian Mews, Flat 2

This vacant room is located on the first floor within Flat 2 of Meridian Mews. The self-contained flat includes a lounge area and kitchen on the ground floor. A staircase with handrails provides access to the flat, offering extra assistance for those who need it.

While the room is unfurnished, it features a built-in wardrobe with ample space for hanging clothes. The en-suite bathroom is equipped with a sink, toilet, and bathtub.



Meet the team



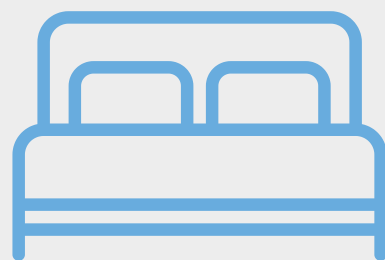
Suzanne, Regional General Manager for London and the South East Region

Suzanne offers 18 years of social care experience, including leadership roles at Active Care Group. Dedicated to achieving exceptional outcomes for individuals, Suzanne leads by example, transforming care and fostering supportive environments for both those we support and her colleagues.



Durotimi, Meridian's Registered Home Manager

With over 12 years of experience in the care sector, Durotimi has been dedicated to delivering exceptional support and outcomes for those in their care. Holding qualifications in management, leadership, and project management, they combine expertise with a passion for fostering sustainable and person-centred services.



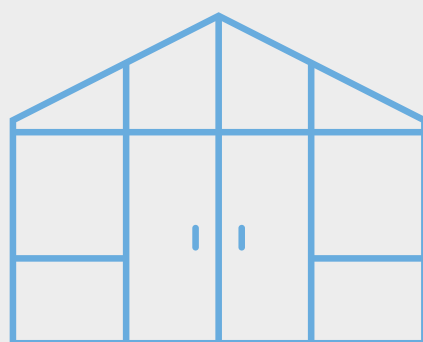
Private bedroom



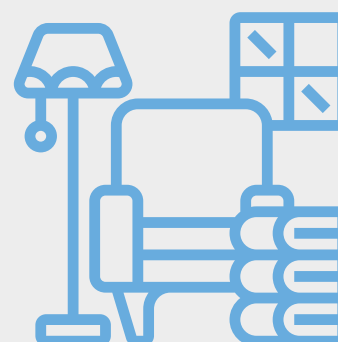
En-suite bathroom



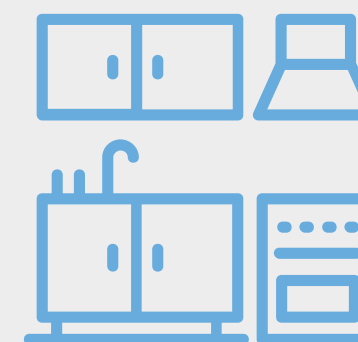
Supported living home



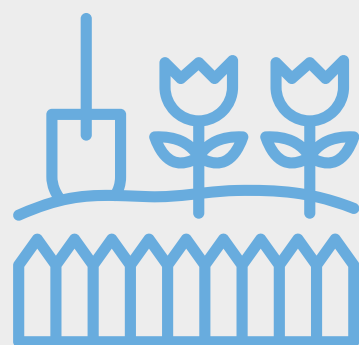
Conservatory



Shared lounge



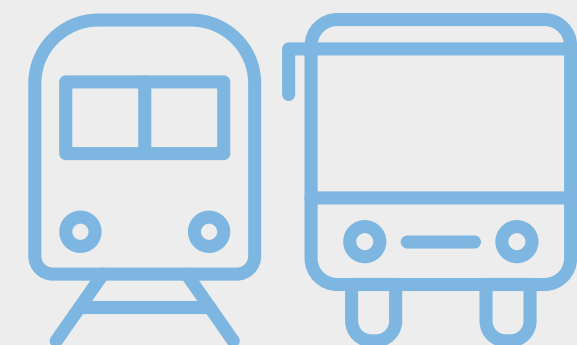
Shared kitchen



Garden access



Wheelchair accessible



Public transport
links



Staff on-site 24/7 &
Registered home manager on-site



Positive Behaviour
Support (PBS)



Person-centred care



Proact-SCIPr training



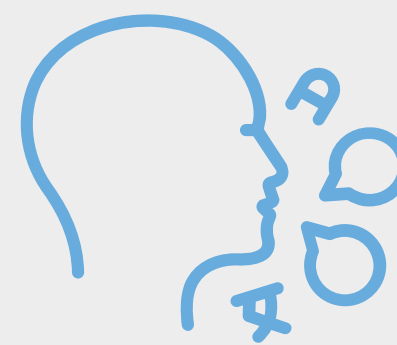
Outcomes-based support &
Personal skill development



Near a SEND College
and Day Centre



Regional support network



Speech and language
therapy



Registered social
landlord

Working Together: Environment, Social and Governance

With Liaise as your partner, you can confidently meet ESG obligations while together we make a tangible difference in the lives of those we support.

- Environmental Responsibility
 - Energy-efficient homes, with heat pump technology and natural light tunnels.
 - Commitment to sustainable procurement and operations.
 - Promoting green practices across our homes and communities.
- Social Impact
 - Measurement of outcomes and goals, to demonstrate impact.
 - Active co-production group to ensure equity and representation.
 - Quality of life improved via high-quality care, skill development, and community engagement.
- Governance Leadership
 - Transparent ESG aligned reporting.
 - Rigorous safeguarding, compliance, and ethical practices.
 - Stakeholder engagement at all levels to ensure accountability and continuous improvement.

Outcomes Based Success



Nathan's* New Mobility Car

We're excited to share a heartwarming success story from Meridian! After months of anticipation, Nathan* has received his brand-new Motability car, a huge step towards greater independence.

The journey began in March with Motability approval, followed by a dedicated effort from our team to ensure everything was in place. Despite a few challenges along the way, our commitment to Nathan never wavered.

This car will make a lasting impact on Nathan's life, giving him the freedom to connect more with his community and enjoy a new level of independence.

*Name and photo changed for privacy

Compliments

“ I just wanted to say a special 'thank you' to you - and to Ruggero and Omobola - for all your incredible support and advice in setting up our loved one's Motability car.

Family Member, April 2024

“ I'm really pleased with how well my loved one is being looked after and how wonderfully the team is working with him. I know I couldn't do it on my own, but I trust the team completely. It makes me so happy to see him thriving—and I can see in his eyes just how happy he is too.

Family Member, November 2023

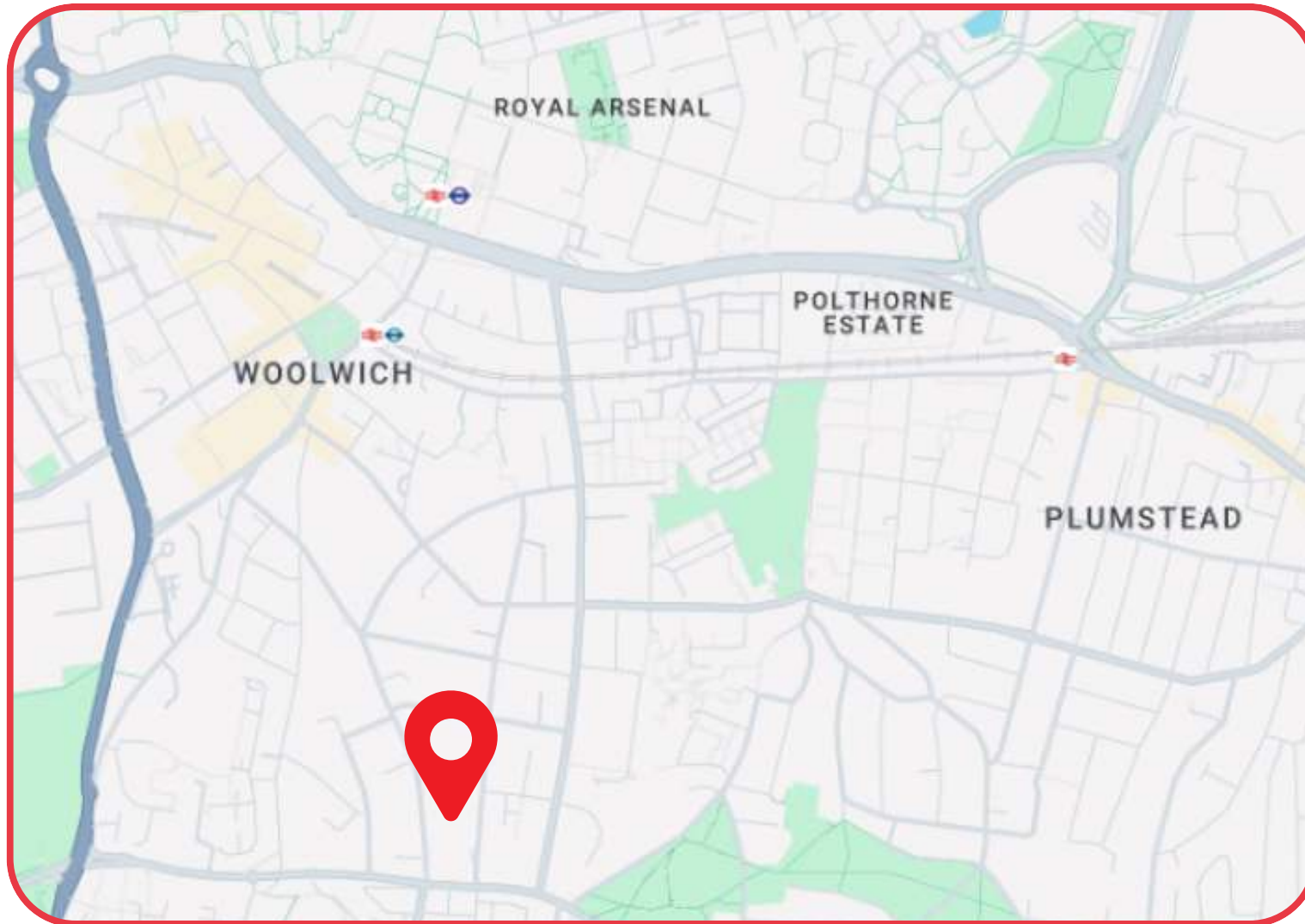
“ I wanted to acknowledge the input from staff and the multidisciplinary team for the wonderful care to a supported individual over the last 12 months. They have benefited from the support. It is wonderful them learning skills, accessing community, developing new friendship to enhance her quality of life and experiences.

Social Care Professional, February 2024

“ I'm really happy with how my loved one has been supported over these past months. He's made so much progress in different areas of his life, especially compared to how things were before he moved to Meridian.

Family Member, March 2023

Location



The Meridian complex lies within the middle of a residential area in Woolwich, South London. The home is located 10-15 minute walk away from Woolwich and Woolwich Arsenal station that serves the DLR, Elizabeth Line, Southeastern and the Thameslink.

Meridian is close to a number of large parks including Woolwich Common, Plumstead Common, Oxleas Woods and Charlton Park. Nearby, there are a number of shopping and other shopping complex and entertainment venues in neighbouring areas of Dartford, Greenwich and Eltham.



Theresa Cook

Referrals & Placement Manager



referrals@liaise.com



0330 500 5052



[LiaiseUK](#)



[Liaise_UK](#)



[LiaiseUK](#)