



# Chingford

Supported Living in  
Chingford, London



External Audit Report

Rated Good



# Specialist Support From Day One

We provide specialist, bespoke support for adults with learning disabilities and autistic people, including those with complex needs and behaviours of distress.

Our approach is rooted in **Positive Behaviour Support (PBS)** and **PROACT-SCIPr-UK**, ensuring support that is respectful, person-led, and focused on promoting independence and wellbeing. We have dedicated **in-house PBS Practitioners** and **Speech and Language therapists** and all team members receive specialist PBS and PROACT-SCIPr-UK training. This collaborative model enables us to deliver high-quality, personalised support that leads to meaningful progress, always driven by what matters most to the people we support.



In-house PBS practitioners for complex behaviour



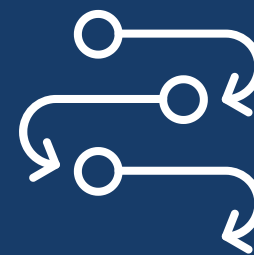
Proact-SCIPr-UK trained staff



In-house SALT for communication and safe eating and drinking



Specialist ABI support and respite care in selected services



Residential and supported living opportunities



Person-led dynamic outcomes framework and measures

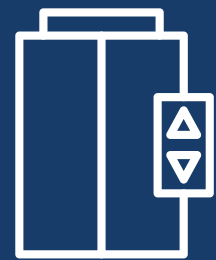


# Independent Living with Community Spaces

We'll work with you to tailor the environment to the specific needs of the person moving in.



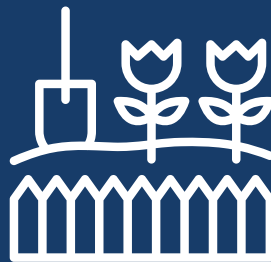
Self Contained  
Apartment with  
Two Rooms



Lift Access



PBS Practitioner  
Solely Assigned to  
the Service



Shared  
Garden



Nearby Learning  
Disability Day  
Centre



Wider Regional  
Peer Network



## Our Available Flat Offers:

- **Spacious Bedroom:** A large, comfortable room featuring a double bed, dresser, and wardrobe.
- **En-Suite Bathroom:** With a sink, toilet and a bathtub.
- **Living room:** A cosy communal space shared with one flatmate, perfect for relaxing or socialising.



# Meet the Team



**Suzanne**, Regional General Manager for London

Suzanne brings over 28 years of social care experience, including senior roles with the Active Care Group. She is committed to delivering outstanding outcomes and leads by example, creating supportive, high-quality environments for both the people we support and her colleagues.



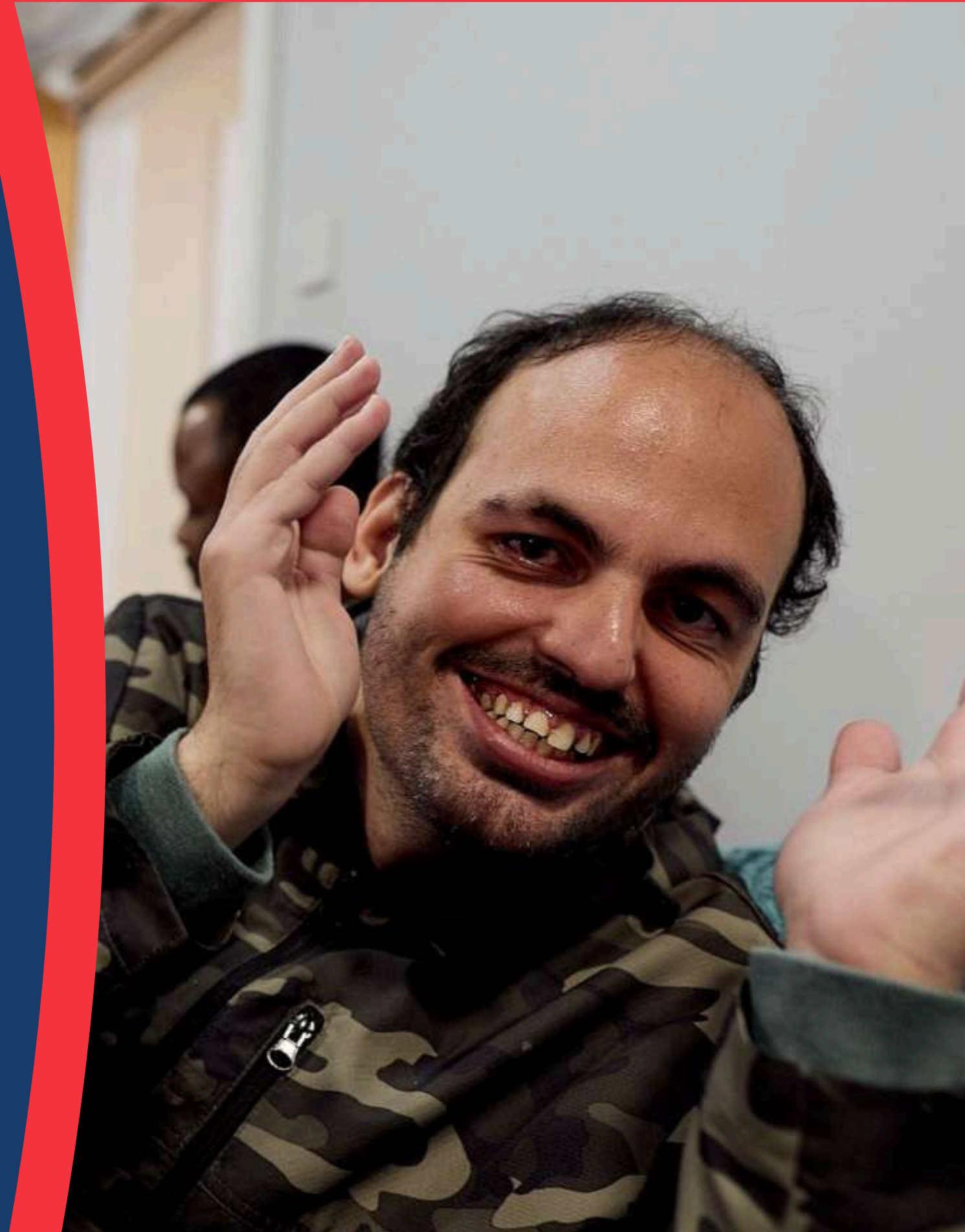
**Helen**, Operations Manager for London

Since 2007, Helen has led social care services to achieve strong outcomes, building high-performing, values-led teams that deliver exceptional support.



**Naresh**, Chingford's Registered Home Manager

Naresh brings over 14 years of adult social care experience. During his time with Voyage Care, he managed two residential services rated "Good" by CQC and PAMMS, reflecting his strong leadership and commitment to person-led care.



# Committed to Co-Production

We have an established Influencers Group, made up of people we support, who play a pivotal role in shaping our services. Their insight ensures that everything we do reflects the needs, preferences, and aspirations of those with lived experience.

By actively listening to and involving this group, we embed authentic perspectives into every aspect of our work. From reviewing policies and practices to shaping key working approaches and designing new living opportunities, their voices directly influence how we develop and improve our support.

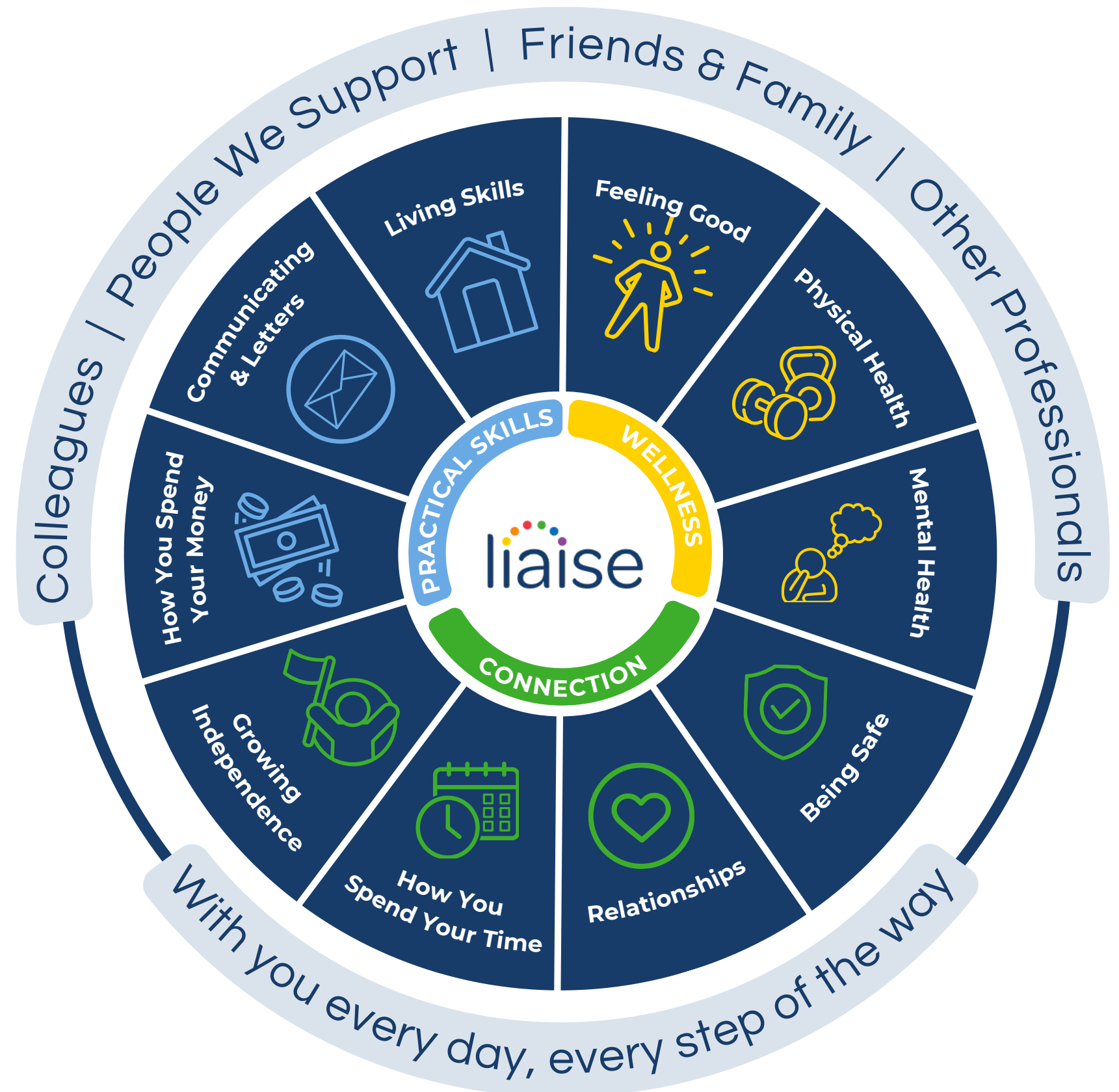


# Every Day, We Help People Thrive

Our Outcomes Pathway Model ensures support is designed with and for each person, creating tailored strategies shaped around their hopes, goals, and aspirations.

This multidisciplinary approach enables us to deliver high-quality, personalised support so people can achieve what matters most to them.

Click here to read our latest stories



# Progress that Matters, Led by the People We Support

Sarah, Andrew and Lisa enjoyed a calm and active day out at Danson Park with staff. The walk around the park supported their physical health and gave everyone a chance to enjoy fresh air and gentle movement. As they explored the flowers and scenery, the group appeared relaxed and happy, which helped support positive mental health and overall wellbeing.

They chatted with each other and with staff throughout the visit, strengthening relationships and practising communication in a natural, social setting. The outing also encouraged small steps in independence, such as deciding what to photograph and engaging confidently with the environment. Being out in the community provided opportunities to stay safe while walking together and following guidance when needed.



To make a referral, call or email

📞 0330 500 5052

✉️ referrals@liaise.com



### Inquiry Received

We will respond within **24 hours** of referral



### Assessment

We will arrange an assessment to fully understand the needs of the individual within **5 working days**



### Sending An Offer

Following the assessment, we will make an offer within **10 working days**



### Invited To View Homes

We encourage you to visit our existing homes or new homes



### Transition

We will begin co-produced transition planning once a placement offer has been accepted



### Move In

To support a successful transition, we'll offer home visits and stays and we'll review the placement at frequent intervals within the **first three months**

## Contact Us



### Theresa Cook

Referrals & Placements Manager



referrals@liaise.com



0330 500 5052



<https://liaise.com/referral/>



LiaiseUK



Liaise\_UK



LiaiseUK