




# Sansa House

Our Residential Home in  
Basingstoke, Hampshire

 **Care Quality Commission** Inspected and rated  
**Outstanding** ★

 **SRG**  
Care Consultancy & Training External Audit Report  
**Rated Good**



# Specialist Support From Day One

We provide bespoke support for adults with **learning disabilities** and **autistic people**, including those with **complex needs**, **behaviours of distress** and **experiencing mental health conditions**. Our approach is rooted in **Positive Behaviour Support (PBS)** and **PROACT-SCIPr-UK**, ensuring support that is person-led and focused on promoting independence and wellbeing.

We have dedicated **in-house PBS Practitioners** and all team members receive **non-restrictive PBS and PROACT-SCIPr-UK training**. This collaborative model enables us to deliver support that leads to meaningful progress, always driven by what matters most to the people we support.



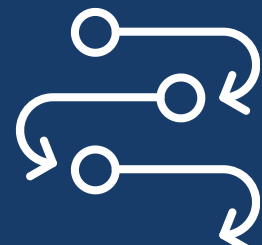
In-house PBS practitioners for complex behaviour



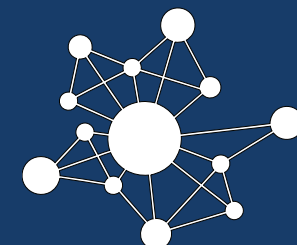
Proact-SCIPr-UK trained staff



Smooth transitions into adult support working with schools and colleges



Discharge pathway with clustered residential services and peer networks



Engaged family and next-of-kin network



Person-led dynamic outcomes framework and measures

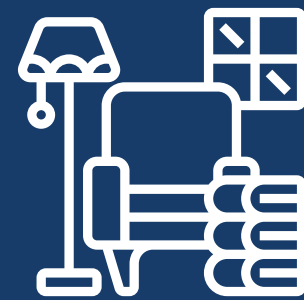


# Tailored Environments, Co-Developed with You

We'll work with you to tailor the environment to the specific needs of the person moving in.



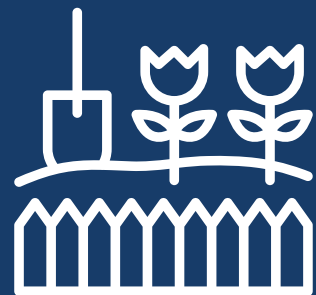
Fully Furnished  
Bedroom



Communal Kitchen  
and Lounge



Off-Street  
Parking



Shared Garden



Nearby Learning  
Disability Day  
Centre

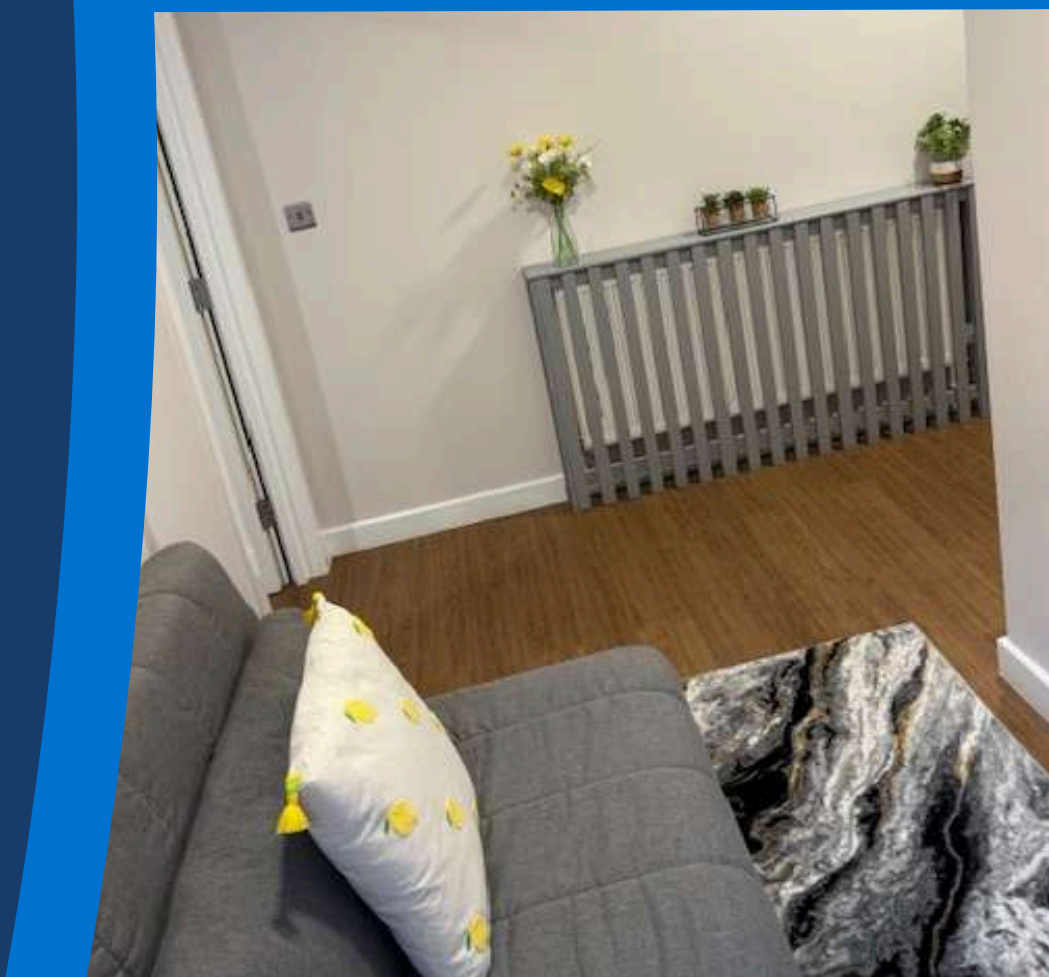


Wider Regional  
Peer Network



## Our Available Rooms Offer:

- **Fully-Furnished Bedroom:** Includes a double bed, dresser, and a wardrobe.
- **Private En-Suite Bathroom:** With a sink, toilet and a bathtub.
- **Private Lounge:** Fully fitted with a sofa, TV and front door.
- **Shared Kitchen:** Shared kitchen with all white goods included.



# Meet the Team



**Brad**, Regional General Manager for the South

Brad has over 25 years of experience across the learning disability sector and in senior leadership roles. He is passionate about partnership working and is dedicated to delivering person-led support that prioritises safety, independence, and helping people live their best lives.



**Alexandra**, Operations Manager for the South

Since 2013, Alexandra has shown the utmost dedication and passion that has seen her progress through senior leadership roles. Currently, she oversees homes across Basingstoke and Hampshire, driving high-quality support.



**Claire**, Sansa House's Registered Home Manager

With over 15 years of experience in health and social care, she brings strong leadership, deep sector knowledge, and a commitment to quality. As a parent of a disabled son, Claire combines professional expertise with lived experience.



# Committed to Co-Production

We have an established Influencers Group, made up of people we support, who play a pivotal role in shaping our services. Their insight ensures that everything we do reflects the needs, preferences, and aspirations of those with lived experience.

By actively listening to and involving this group, we embed authentic perspectives into every aspect of our work. From reviewing policies and practices to shaping key working approaches and designing new living opportunities, their voices directly influence how we develop and improve our support.

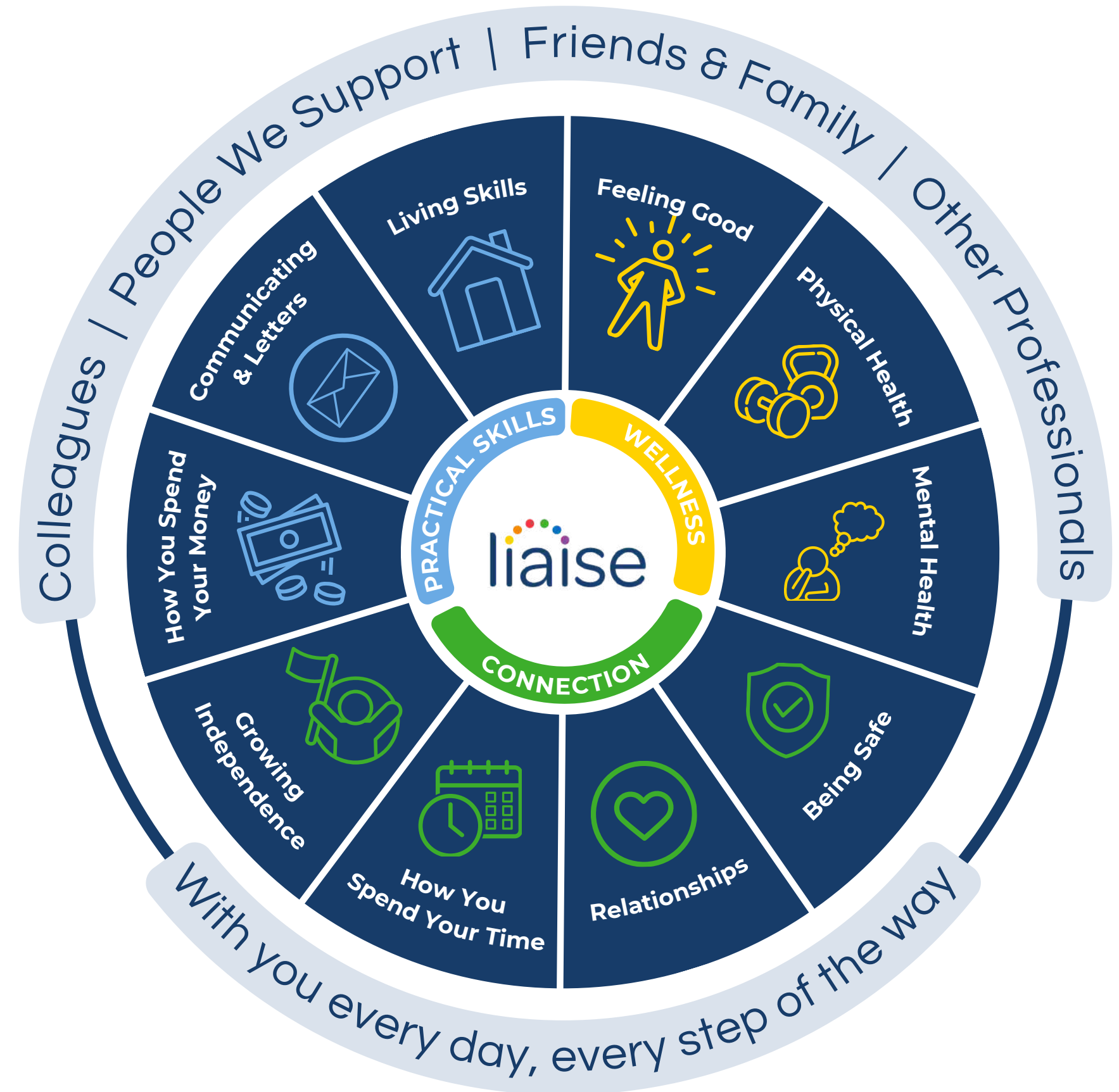


# Every Day, We Help People Thrive

Our Outcomes Pathway Model ensures support is designed with and for each person, creating tailored strategies shaped around their hopes, goals, and aspirations.

This multidisciplinary approach enables us to deliver high-quality, personalised support so people can achieve what matters most to them.

[Click here to read our latest stories](#)

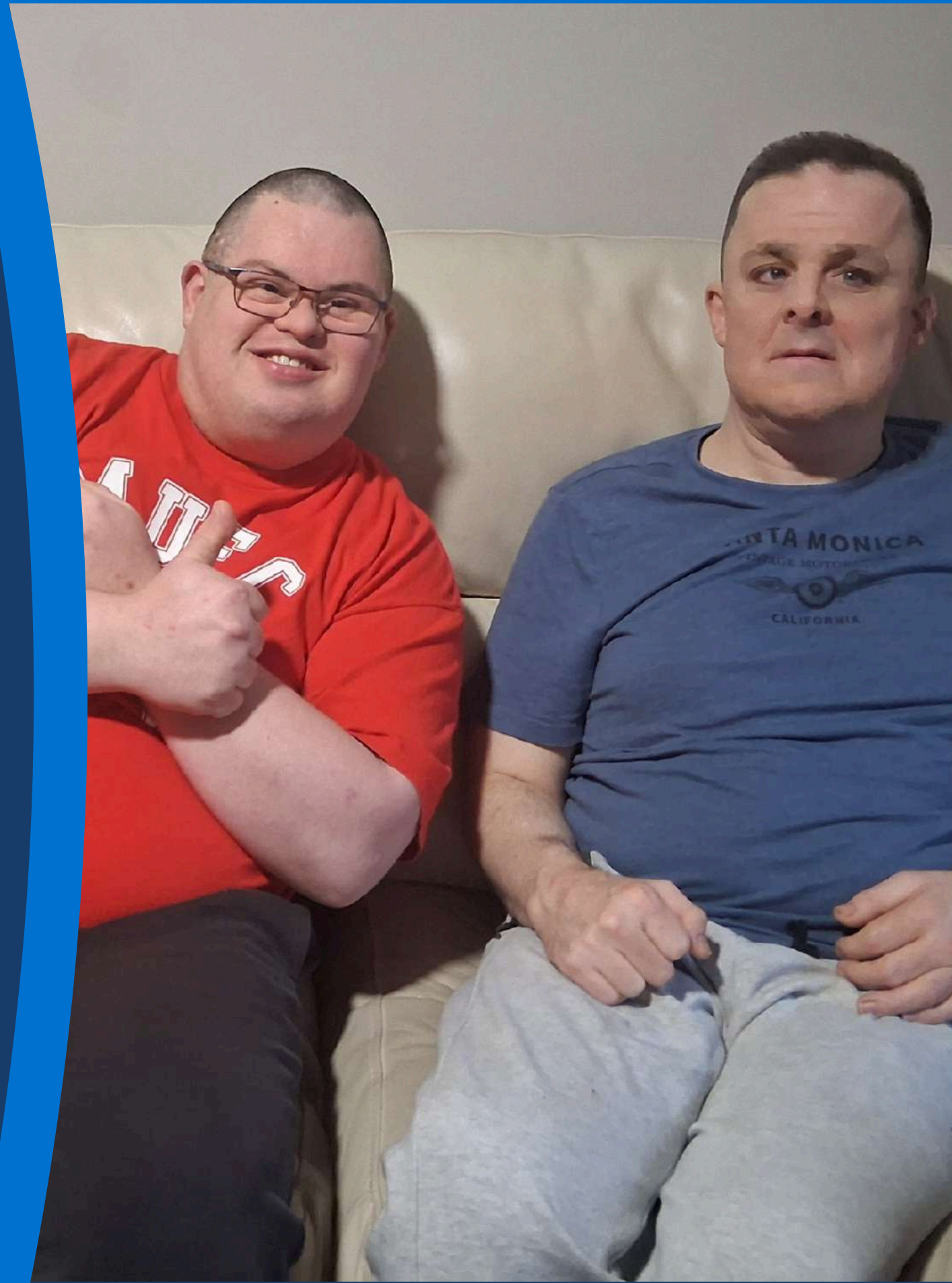


# Progress that Matters, Led by the People We Support

When Michael moved into Sansa House, Thomas helped him feel welcome straight away. Michael is deaf, and Thomas, already confident in Makaton, supported him to communicate and settle into his new home. The two quickly formed a strong friendship. One of their favourite things to do is visit the pub together. Thomas signs the menu for Michael so he can choose exactly what he wants - small but meaningful moments that have boosted Michael's confidence, independence and sense of inclusion.

To make communication easier for everyone, Thomas also taught the whole Sansa House team Makaton. His leadership made such a difference that he was proudly given the title of Chief Communication Officer for Sansa!

Since moving in, Michael has grown significantly in independence, signing his daily choices - swimming, the cinema, cooking and more. His parents have shared how much happier he is, and how wonderful it is to see such a genuine friendship developing. Thomas's keyworker describes him as "one of the most helpful people she has ever met." His kindness, communication skills and peer support have had a real impact on Michael - and on the whole home.



To make a referral, call or email

 0330 500 5052

 [referrals@liaise.com](mailto:referrals@liaise.com)



### Inquiry Received

We will respond within **24 hours** of referral



### Assessment

We will arrange an assessment to fully understand the needs of the individual within **5 working days**



### Sending An Offer

Following the assessment, we will make an offer within **10 working days**



### Invited To View Homes

We encourage you to visit our existing homes or new homes



### Transition

We will begin co-produced transition planning once a placement offer has been accepted



### Move In

To support a successful transition, we'll offer home visits and stays and we'll review the placement at frequent intervals within the **first three months**

## Contact Us



### Chelsea Chard

Referrals Partner and  
Young Adults Lead



[referrals@liaise.com](mailto:referrals@liaise.com)



0330 500 5052



<https://liaise.com/referral/>