



Applelea

Our Residential Home in
Basingstoke, Hampshire



Inspected and rated

Good



External Audit Report

Rated Good



Specialist Support From Day One

We provide bespoke support for adults with **learning disabilities** and **autistic people**, including those with **complex needs**, **behaviours of distress** and **experiencing mental health conditions**. Our approach is rooted in **Positive Behaviour Support (PBS)** and **PROACT-SCIPr-UK**, ensuring support that is person-led and focused on promoting independence and wellbeing.

We have dedicated **in-house PBS Practitioners** and all team members receive **non-restrictive PBS and PROACT-SCIPr-UK training**. This collaborative model enables us to deliver support that leads to meaningful progress, always driven by what matters most to the people we support.



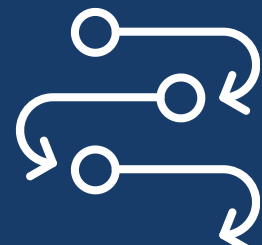
In-house PBS practitioners for complex behaviour



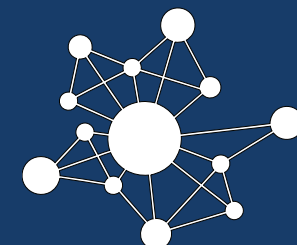
Proact-SCIPr-UK trained staff



Smooth transitions into adult support working with schools and colleges



Discharge pathway with clustered residential services and peer networks



Engaged family and next-of-kin network



Person-led dynamic outcomes framework and measures

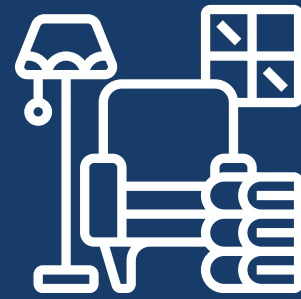


Tailored Environments, Co-Developed with You

We'll work with you to tailor the environment to the specific needs of the person moving in.



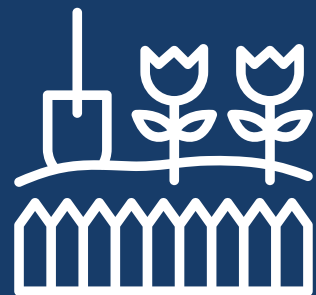
Fully Furnished
Bedroom



Communal Kitchen
and Lounge



Off-Street
Parking



Shared Garden



Nearby Learning
Disability Day
Centre



Wider Regional
Peer Network



Our Available Room Offer:

- **Fully-Furnished Bedroom:**
Includes a bed, dresser, and a wardrobe.
- **Private En-Suite Bathroom:**
With a sink, toilet and a bathtub.
- **Natural Lighting:** Access to bright natural sunlight and views of the garden.



Meet the Team



Brad, Regional General Manager for the South

Brad has over 25 years of experience across the learning disability sector and in senior leadership roles. He is passionate about partnership working and is dedicated to delivering person-led support that prioritises safety, independence, and helping people live their best lives.



Alexandra, Operations Manager for the South

Since 2013, Alexandra has shown the utmost dedication and passion that has seen her progress through senior leadership roles. Currently, she oversees homes across Basingstoke and Hampshire, driving high-quality support.



Ion, Applelea's Registered Home Manager

Since joining Liaise in 2013, Ion has demonstrated a strong commitment to supporting people with learning disabilities and complex needs. He now leads Applelea, where he focuses on delivering high-quality, person-led support.



Committed to Co-Production

We have an established Influencers Group, made up of people we support, who play a pivotal role in shaping our services. Their insight ensures that everything we do reflects the needs, preferences, and aspirations of those with lived experience.

By actively listening to and involving this group, we embed authentic perspectives into every aspect of our work. From reviewing policies and practices to shaping key working approaches and designing new living opportunities, their voices directly influence how we develop and improve our support.

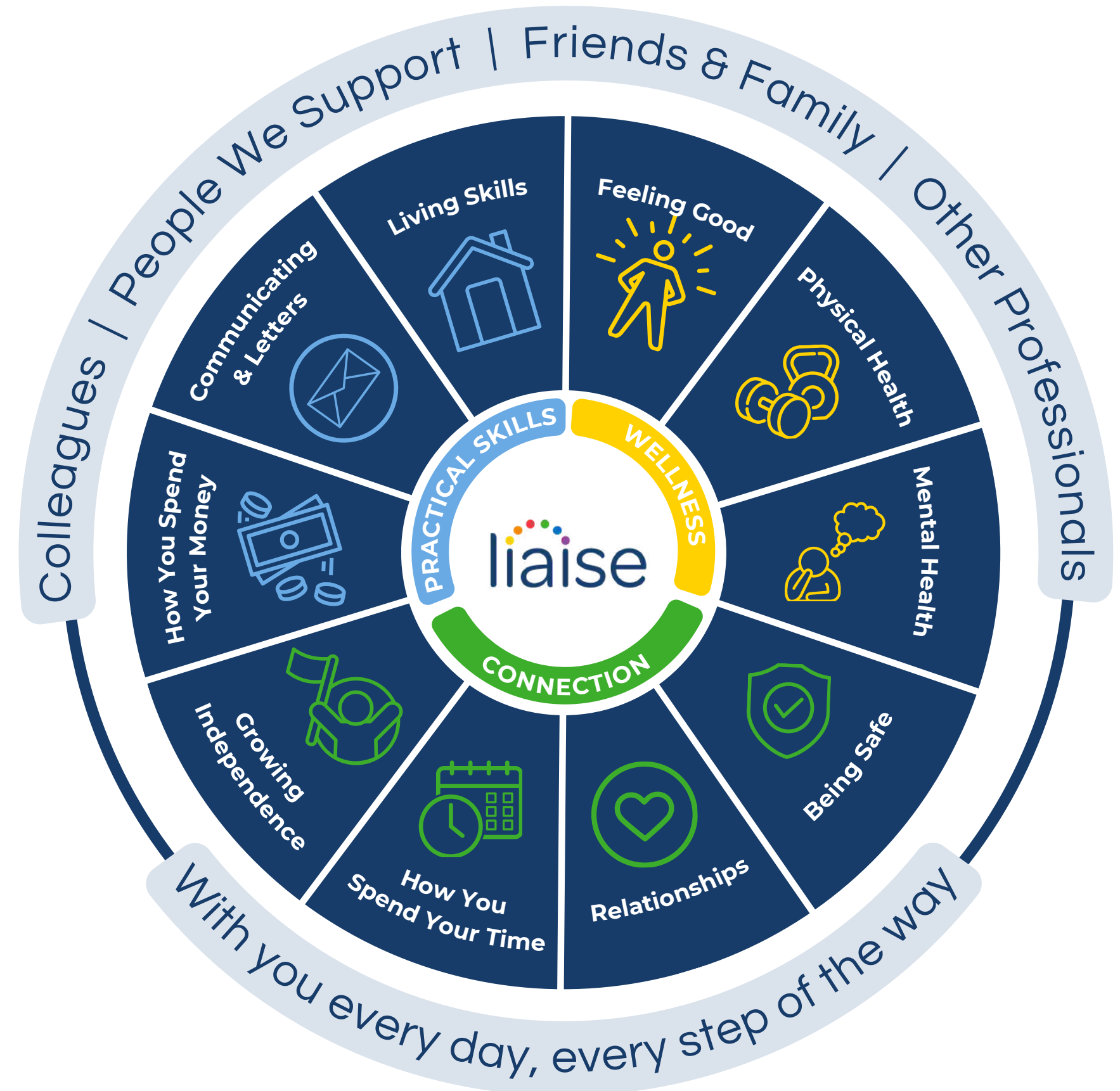


Every Day, We Help People Thrive

Our Outcomes Pathway Model ensures support is designed with and for each person, creating tailored strategies shaped around their hopes, goals, and aspirations.

This multidisciplinary approach enables us to deliver high-quality, personalised support so people can achieve what matters most to them.

Click here to read our latest stories



Progress that Matters, Led by the People We Support

Katerina continues to achieve positive outcomes through her regular participation in the Green Fingers gardening activity. She engages consistently and with purpose, taking part in planting, soil preparation, and watering tasks, which support both skill development and meaningful routine.

Katerina has shown clear progress in confidence and independence, particularly when using gardening tools and completing each step of the activity with greater assurance. She remains calm and settled throughout sessions, demonstrating sustained engagement and interest in what she is doing. Gardening provides her with valuable opportunities for sensory engagement, outdoor activity, and structured routine, all of which support her wellbeing.



To make a referral, call or email

 0330 500 5052

 referrals@liaise.com



Inquiry Received

We will respond within **24 hours** of referral



Assessment

We will arrange an assessment to fully understand the needs of the individual within **5 working days**



Sending An Offer

Following the assessment, we will make an offer within **10 working days**



Invited To View Homes

We encourage you to visit our existing homes or new homes



Transition

We will begin co-produced transition planning once a placement offer has been accepted



Move In

To support a successful transition, we'll offer home visits and stays and we'll review the placement at frequent intervals within the **first three months**

Chelsea Chard

Contact Us



Chelsea Chard

Referrals Partner and Young Adults Lead



referrals@liaise.com



0330 500 5052



<https://liaise.com/referral/>



<https://liaise.com/home/applelea/>



LiaiseUK



Liaise_UK



LiaiseUK