



# Chantry Road

---

A residential care home in  
Worthing, West Sussex

BN13 1QN





# Experience you can trust, support you can rely on

We support adults with learning disabilities and autistic people, including those with complex needs and challenging behaviour, in residential care and supported living homes across London, the South and East of England



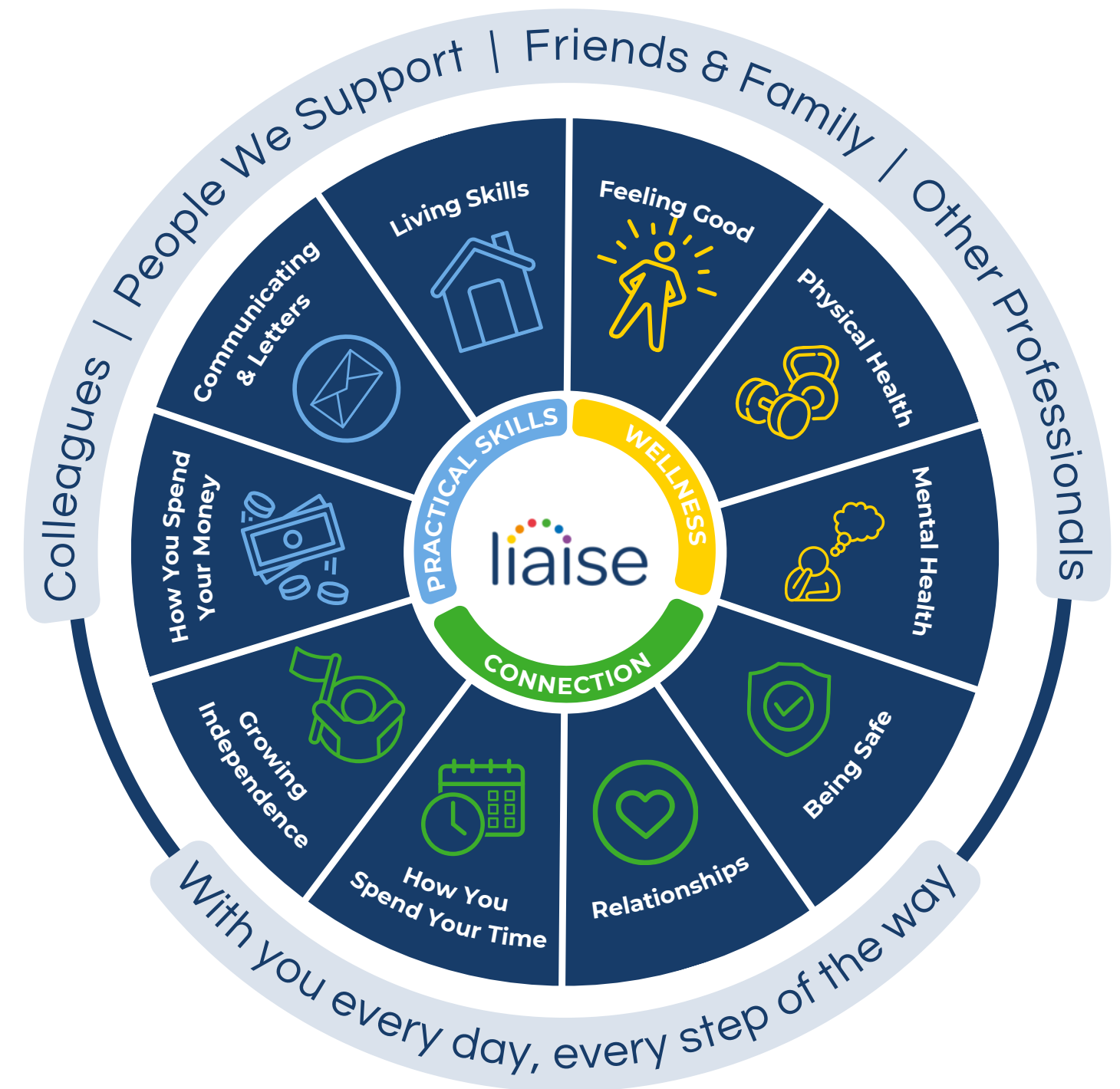


# Improving Lives

Built on the principles of Positive Behaviour Support (PBS) and Proact-SCIPr-UK training, our approach prioritises respect for individual needs, promotes independence, and ensures safety and well-being.

We go beyond standard care by equipping all team members with specialist PBS training, guided by the expertise of PBS Practitioners, Speech and Language Therapists, and Occupational Therapists. This collaborative approach enables us to deliver high-quality, tailored support that drives meaningful outcomes for the people we support.

Our innovative Outcomes Pathway Model (right) helps us design bespoke care strategies based on each person's unique hopes, goals, and aspirations.



# Co-production

We're proud to have an established Influencers Group, made up of supported individuals from our homes. This group plays a pivotal role in shaping our plans, ensuring they are genuinely aligned with the needs and aspirations of all those living in a Liaise home.

By listening to people with lived experience, we bring an enriched, authentic perspective to everything we do. From policy and practice reviews to designing new homes, their voices directly influence our approach to key working, goal setting, and designing services.

Our commitment to co-production means creating meaningful partnerships that empower individuals, drives inclusion, and deliver homes truly tailored to those we support. Together with our Influencers, we're making Liaise the best possible place to live - a place where everyone's voice shapes the future.





# Overview

Chantry Road is a warm and sociable residential home near the seaside, where community and connection thrive. Our friendly team creates a welcoming environment that fosters meaningful relationships and personal growth. Located deeper into Worthing, Chantry is near outdoor spaces and the local town centre's amenities. It's ideal for those seeking a peaceful town environment with easy access to a variety of shops, services, and leisure activities.

Chantry is more than just a residential care home – it's a thriving, inclusive community. Collaborating with neighbouring Liaise homes, we host shared events and combine resources to foster a supportive and engaging environment where everyone feels valued. If you're looking for a care setting that offers outstanding support, enriching activities, and a genuine sense of connection, we'd be happy to discuss how Chantry can positively impact the lives of those you support.





# Chantry,

A charming ground-floor en-suite bedroom has become available at Chantry, offering serene views of the front garden and a glimpse of the bustling main road beyond. This relatively sized, semi-furnished space includes a comfortable bed, a wardrobe, and an optional chest of drawers. The private en-suite bathroom is completed with a shower and toilet.





# Meet the team



**Suzanne**, Regional General Manager for London and the South East Region

Suzanne offers 18 years of social care experience, including leadership roles at Active Care Group. Dedicated to achieving exceptional outcomes for individuals, Suzanne leads by example, transforming care and fostering supportive environments for both those we support and her colleagues.



**Stephanie**, Operations Manager for the South East Region

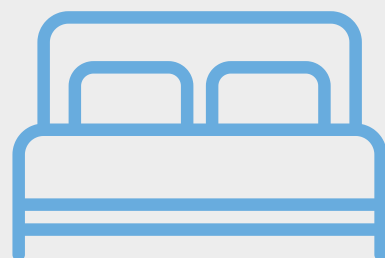
Stephanie's background includes leading a 26-bed nursing service for Voyage Care. She is committed to collaboration and teamwork, ensuring the people we support receive high-quality care with dignity and respect, always striving to deliver the best possible outcomes.



**Binita**, Chantry's Registered Home Manager

Binita joined Liaise in December 2024 and brought over 10 years of experience in health and social care, including residential and supported living services. Passionate about person-centred care, she fosters a positive and empowering environment at Chantry.





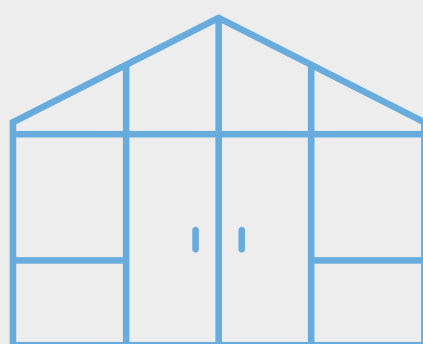
Private bedroom



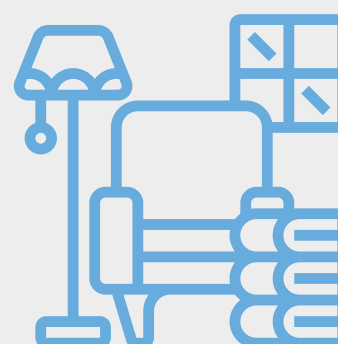
En-suite bathroom



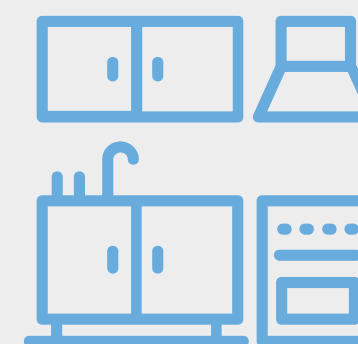
Residential home



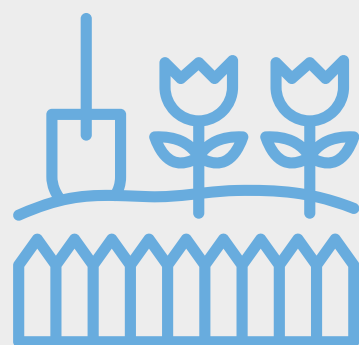
Summer house



Shared lounge



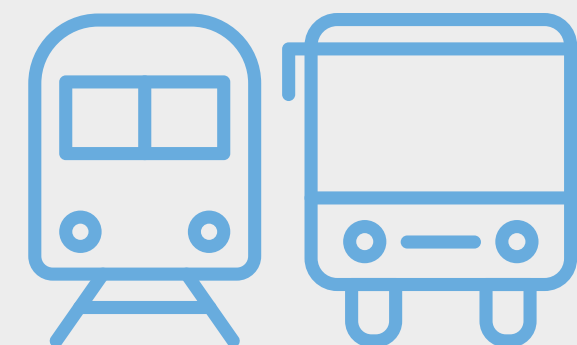
Shared kitchen



Garden access



Wheelchair accessible



Public transport  
links



Staff on-site 24/7



Registered home manager on-site



Person-centred care



Proact-SCIPr training



Outcomes-based support



Near a SEND College and Day Centre



Regional support network



Near local amenities



Personal skill development



# Working Together: Environment, Social and Governance

With Liaise as your partner, you can confidently meet ESG obligations while together we make a tangible difference in the lives of those we support.

- Environmental Responsibility
  - Energy-efficient homes, with heat pump technology and natural light tunnels.
  - Commitment to sustainable procurement and operations.
  - Promoting green practices across our homes and communities.
- Social Impact
  - Measurement of outcomes and goals, to demonstrate impact.
  - Active co-production group to ensure equity and representation.
  - Quality of life improved via high-quality care, skill development, and community engagement.
- Governance Leadership
  - Transparent ESG aligned reporting.
  - Rigorous safeguarding, compliance, and ethical practices.
  - Stakeholder engagement at all levels to ensure accountability and continuous improvement.

# Outcomes Based Success

## Water Balloon Party

One of the most unforgettable moments from this past summer was the lively water balloon party. The garden was buzzing with excitement, and the air was filled with laughter as the people we support came together to enjoy the fun.

The evening turned into an incredible display of joy and connection. With heartfelt smiles and cheerful expressions, everyone who joined in created a truly special atmosphere. You could feel the happiness radiating all around, as splashes of water and peals of laughter echoed through the garden.





# Compliments

“Martina has been one of the most helpful and considerate people we've known in over 30 years of support, consistently organised, attentive, and ensuring no loose ends remain – a true masterclass in communication and care.

**Family Member**, August 2024

“Under Home Manager’s leadership, Chantry has truly embraced person-focused planning and action. They have been instrumental in advocating for the rights and interests of those supported, collaborating with professionals to ensure their health and wellbeing are prioritised. It’s evident that the individuals at Chantry are listened to, and clear, positive actions are consistently taken to achieve the best outcomes. A great example of personal, progressive care and support

**Team Member**, April 2024

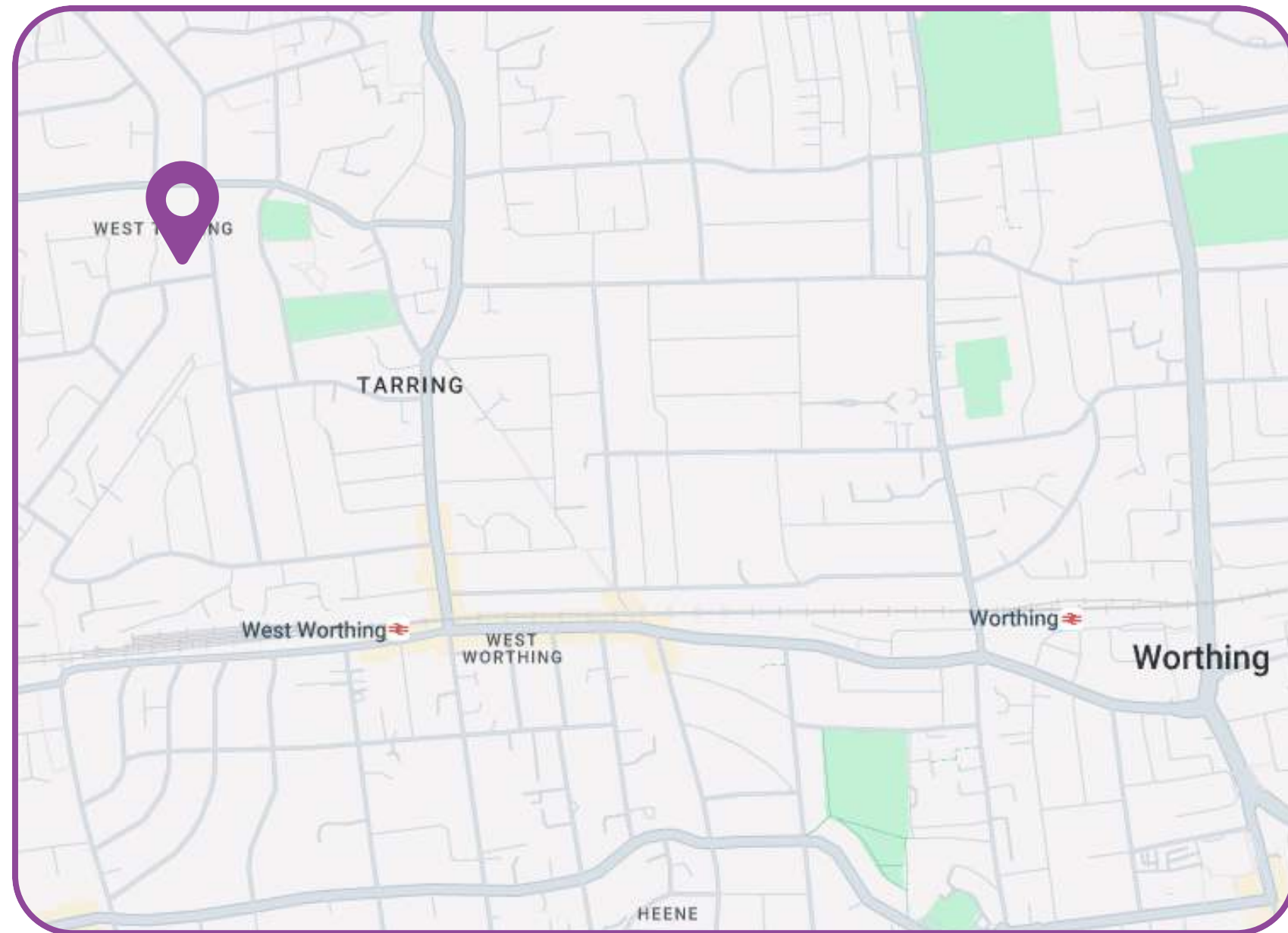
“Thank you for taking the time to show us around. The service is truly lovely, and we were particularly impressed by the rooms and how thoughtfully they are maintained for the people you support. It’s clear a lot of care and attention goes into creating such a welcoming environment

**Social Care Professional**, June 2024

“When speaking with the case manager regarding referrals, they complimented Chantry’s management team. The case manager mentioned that they are an excellent manager, extremely efficient, and that the person-centred care for the individuals living at Chantry is excellent.”

**Health Care Professional**, January 2024

# Location

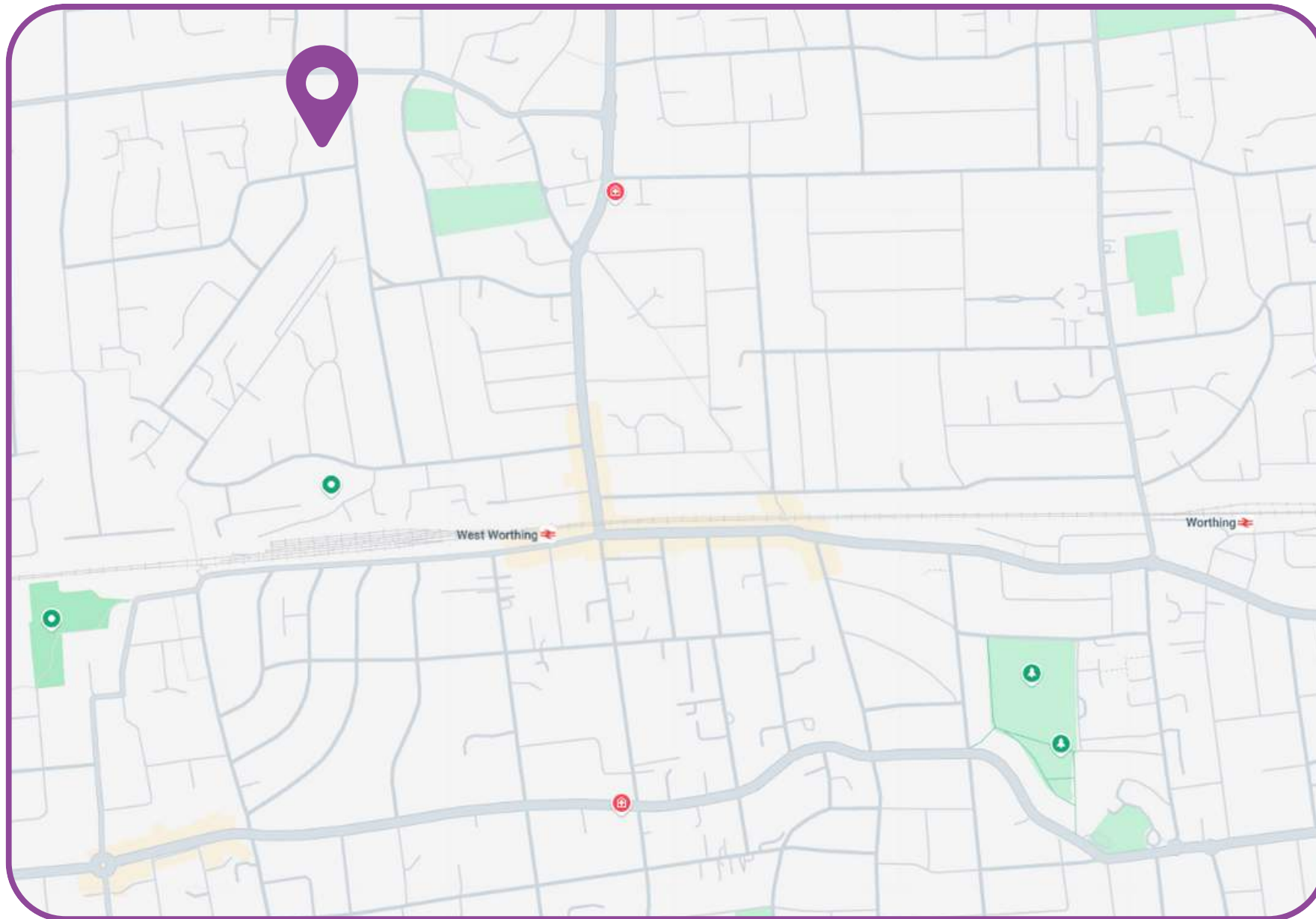


Chantry is nestled in the Worthing neighbourhoods of West Tarring and Offington, offering a vibrant community setting. Just a short drive from the town centre, residents can enjoy the beach, iconic Worthing Pier, and a variety of shopping outlets, cafés, and local attractions. This location perfectly balances coastal charm with an urban environment.

With excellent transport links, Worthing provides easy access to destinations along the south coast, including Brighton, Chichester, Portsmouth, and Southampton. Direct connections to London further enhance Chantry's appeal, offering convenience for travel, leisure, and relaxation.



# Location



Chantry is nestled in the Worthing neighbourhoods of West Tarring and Offington, offering a vibrant community setting. Just a short drive from the town centre, residents can enjoy the beach, iconic Worthing Pier, and a variety of shopping outlets, cafés, and local attractions. This location perfectly balances coastal charm with an urban environment.

With excellent transport links, Worthing provides easy access to destinations along the south coast, including Brighton, Chichester, Portsmouth, and Southampton. Direct connections to London further enhance Chantry's appeal, offering convenience for travel, leisure, and relaxation.



## Theresa Cook

Referrals & Placement Manager



[referrals@liaise.com](mailto:referrals@liaise.com)



0330 500 5052



[LiaiseUK](#)



[Liaise\\_UK](#)



[LiaiseUK](#)