



Introducing Birchwood House

Birchwood House is an Adult Learning Disability and Autism residential care home based in Newham, London which can accommodate seven people. Our service is ranked Good by the CQC. As one of the leading care homes in Newham, our experienced staff are on hand to ensure tailored care for each resident and each individual is empowered to live as independently as possible with positive behaviour support.

Services we provide include:

- Positive Behaviour Support
- Occupational Therapy
- Speech and Language Therapy
- Independent living skills
- Bespoke activity programmes
- Regular social events
- Outings & Trips

Our specialist offer:

- Positive Behaviour Support
- Occupational Therapy
- Speech and Language Therapy
- Proact-Scipr-UK trained staff
- Bespoke Support Plans



Samera Layquat Home Manager

“At Birchwood House we collaborate as a community and celebrate our different backgrounds and cultures together to create a vibrant and caring environment for the people we support. We’re incredibly passionate about positive outcomes for the people we support in our care and helping them meet their personal goals every day to help them thrive”

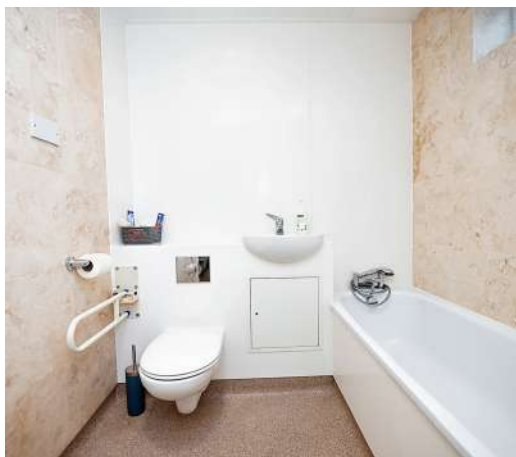
Barbara Smith Stewart Deputy Manager

“One of my greatest joys is delivering a nurturing relationship and care that positively shapes the life of the people we support at Birchwood House. Seeing someone you support progress and become able to share their inner feelings with you fills me with a tremendous sense of gratitude and achievement.”



Facilities:

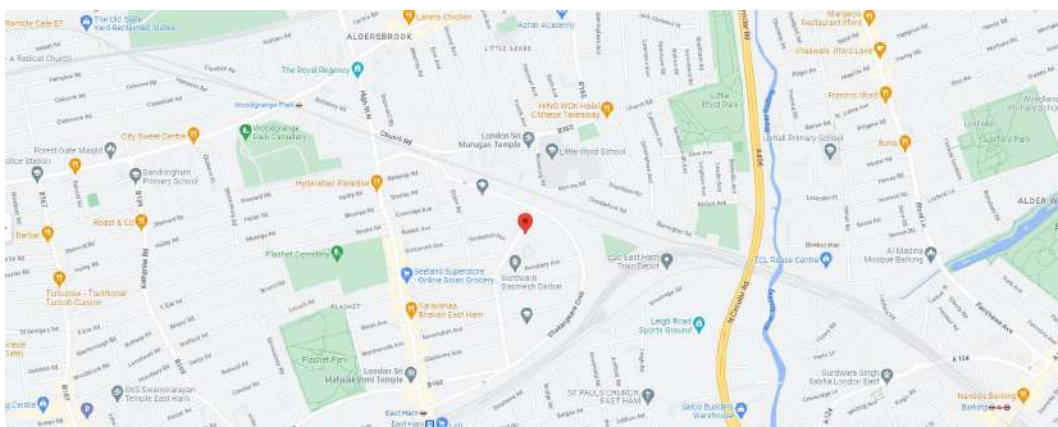
Birchwood House is a seven bedded home. Each room is equipped with an en-suite bathroom and kitchenette to promote independence. The home provides beautiful shared communal areas throughout the home which are, perfect for socialising and events. The large garden is decorated with plants and flowers planted by the people we support. There are efficient transport links close by many local activities in which residents can participate in.



Where to find us

97 Browning Road
Newham
London
E12 6RB

Motorway: North Circular Road
Bus: 147
Train: Woodgrange Park



To discuss your current placement needs, make a referral or meet the team at Birchwood House, please contact:

Mark Horton - Liaise Head of Sales and Marketing
Email: referrals@liaise.com
Phone: 0330 500 5053